

# Midas Expert Network – Tips from the Experts

## Seth Greenberg, PE (NY, IL), Structural Engineer at Jacobs

- MIDAS is very compatible with Excel. Anything that MIDAS presents in tabular format can be copied to and from excel. This can speed up the pre-and-post-processing of analysis.
- For inputs that are not in tabular format, you can use the MCT command shell to generate new inputs quickly. Commands can also be generated using Excel macros.

### Compatibility with Excel

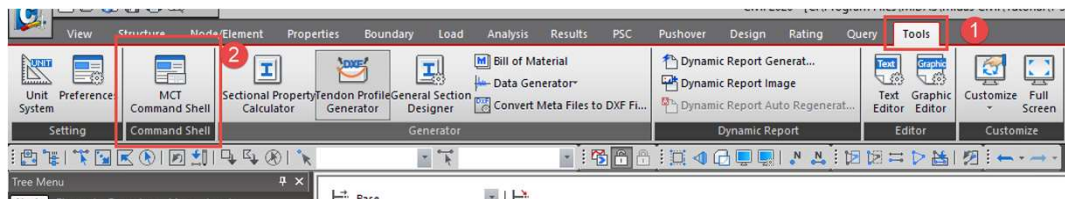
Node	Load	DX (ft)	DY (ft)	DZ (ft)	RX (rad)	RY (rad)	RZ (rad)
1	MVL(all)	0.028458	0.008814	0.000000	-0.001223	0.001935	-0.000316
2	MVL(all)	-0.028457	0.008814	0.000000	-0.001223	-0.001935	0.000316
3	MVL(all)	0.033539	0.022548	-0.000570	-0.000860	0.001269	0.000211
4	MVL(all)	0.028364	0.010986	0.000000	-0.001717	0.003726	-0.000338
5	MVL(all)	-0.028364	0.010986	0.000000	-0.001717	-0.003726	-0.000338
6	MVL(all)	0.036510	0.023671	-0.009942	-0.000968	0.001728	0.000242
7	MVL(all)	-0.036505	0.007229	0.000000	-0.001129	0.001254	-0.000322
8	MVL(all)	0.030398	-0.007229	0.000000	-0.001129	-0.001254	0.000322
9	MVL(all)	0.033497	-0.023276	-0.009662	0.000957	0.001112	0.000216
10	MVL(all)	-0.031591	0.011561	-0.007580	-0.002846	0.000880	-0.000322
11	MVL(all)	-0.032160	0.014524	-0.014789	-0.003922	-0.001203	-0.000320
12	MVL(all)	-0.032093	0.014343	-0.021427	-0.003764	-0.001131	-0.000316
13	MVL(all)	-0.031374	0.011053	-0.027460	-0.002254	0.001089	-0.000310
14	MVL(all)	-0.033243	0.018421	-0.033045	-0.005219	-0.001499	-0.000302
15	MVL(all)	-0.034784	0.021709	-0.037574	-0.006380	-0.002070	-0.000294
16	MVL(all)	-0.034283	0.020138	-0.040801	-0.005625	-0.001857	-0.000285
17	MVL(all)	-0.032404	0.017833	-0.042951	-0.003588	-0.001199	-0.000275
18	MVL(all)	-0.035236	0.020354	-0.044488	-0.005905	-0.001789	-0.000264
19	MVL(all)	-0.036171	0.023107	-0.044622	-0.006791	-0.002151	-0.000251
20	MVL(all)	-0.035526	0.020607	-0.043778	-0.005665	-0.001898	-0.000238
21	MVL(all)	-0.033588	0.021730	-0.041573	-0.003381	-0.001177	-0.000224
22	MVL(all)	-0.034867	0.020887	-0.038835	-0.004875	-0.001573	-0.000209
23	MVL(all)	-0.035195	0.020934	-0.035236	-0.005344	-0.001703	-0.000193
24	MVL(all)	-0.034723	0.021452	-0.030728	-0.004093	-0.001533	-0.000179
25	MVL(all)	-0.033886	0.022441	-0.025520	-0.001971	-0.001216	-0.000170
26	MVL(all)	-0.033840	-0.023912	-0.020170	0.004147	-0.001205	-0.000170
27	MVL(all)	-0.033718	-0.025974	-0.014878	0.005398	-0.001177	-0.000179
28	MVL(all)	-0.033598	-0.025613	-0.011436	0.004346	-0.001143	-0.000194
29	MVL(all)	0.033599	-0.025612	-0.011436	0.004346	0.001143	-0.000194
30	MVL(all)	0.033719	-0.025975	-0.014880	0.005398	0.001177	-0.000179
31	MVL(all)	0.033840	-0.023912	-0.020170	0.004147	0.001205	-0.000170
32	MVL(all)	0.033887	0.022441	-0.025520	-0.001971	0.001216	-0.000170
33	MVL(all)	0.034723	0.021452	-0.030728	-0.004093	0.001533	-0.000179
34	MVL(all)	0.035195	0.020934	-0.035236	-0.005345	0.001703	-0.000193
35	MVL(all)	0.034868	0.020887	-0.038835	-0.004872	0.001573	-0.000209
36	MVL(all)	0.033588	0.021730	-0.041573	-0.003381	0.001177	-0.000224

MIDAS Civil

Node	Load	Dx (ft)	Dy (ft)	Dz (ft)	Rx (rad)	Ry (rad)	Rz (rad)
1	MVL(all)	0.028458	0.008814	0	-0.001222	0.001935	-0.000321
2	MVL(all)	-0.02846	0.008814	0	-0.001222	-0.001934	0.000321
3	MVL(all)	0.033539	0.022548	-0.00057	-0.00086	0.001269	0.000211
4	MVL(all)	0.028364	0.010986	0	-0.00172	0.003726	-0.000338
5	MVL(all)	-0.02836	0.010986	0	-0.00172	-0.00373	-0.00034
6	MVL(all)	0.03651	0.023671	-0.00994	-0.00097	0.001728	0.000242
7	MVL(all)	-0.03651	0.007229	0	-0.00113	0.001254	-0.00032
8	MVL(all)	0.0304	0.007229	0	-0.00113	-0.00125	-0.00032
9	MVL(all)	0.030606	0.007229	0	-0.00113	-0.00125	-0.00032
10	MVL(all)	0.033497	-0.02328	-0.00966	0.000957	0.001112	0.000216
11	MVL(all)	-0.03159	0.011561	-0.00758	-0.00285	0.00088	-0.00032
12	MVL(all)	-0.03216	0.014524	-0.01479	-0.00392	-0.0012	-0.00032
13	MVL(all)	-0.03209	0.014343	-0.02143	-0.00376	-0.00113	-0.00032
14	MVL(all)	-0.03137	0.011053	-0.02746	-0.00225	0.001089	-0.00031
15	MVL(all)	-0.03324	0.018421	-0.03305	-0.00522	-0.0015	-0.0003
16	MVL(all)	-0.03478	0.021709	-0.03757	-0.00638	-0.00207	-0.00029
17	MVL(all)	-0.03428	0.020138	-0.0408	-0.00563	-0.00186	-0.00029
18	MVL(all)	-0.0324	0.017833	-0.04295	-0.00359	-0.0012	-0.00028
19	MVL(all)	-0.03524	0.020354	-0.04449	-0.00591	-0.00179	-0.00026
20	MVL(all)	-0.03617	0.023107	-0.04482	-0.00679	-0.00215	-0.00025
21	MVL(all)	-0.03553	0.020607	-0.04378	-0.00567	-0.0019	-0.000238
22	MVL(all)	-0.03359	0.02173	-0.04157	-0.00338	-0.00118	-0.000224
23	MVL(all)	-0.03487	0.020887	-0.03884	-0.00488	-0.00157	-0.000209
24	MVL(all)	-0.0352	0.020934	-0.03524	-0.00534	-0.0017	-0.000193
25	MVL(all)	-0.03472	0.021452	-0.03073	-0.00409	-0.00153	-0.000179
26	MVL(all)	-0.03389	0.022441	-0.02552	-0.00197	-0.00122	-0.00017
27	MVL(all)	-0.03384	-0.02391	-0.02017	0.004147	-0.00121	-0.00017
28	MVL(all)	-0.03372	-0.02597	-0.01488	0.005398	-0.00118	-0.000179
29	MVL(all)	-0.0336	-0.02561	-0.01144	0.004346	-0.00114	-0.000194
30	MVL(all)	0.033599	-0.02561	-0.01144	0.004346	0.00114	-0.00019
31	MVL(all)	0.033719	-0.02598	-0.01488	0.005398	0.001177	-0.00018

Excel

### MCT Command Shell



How to use MCT Command Shell: <https://midasoft.teachable.com/courses/useful-tips/lectures/14002739>