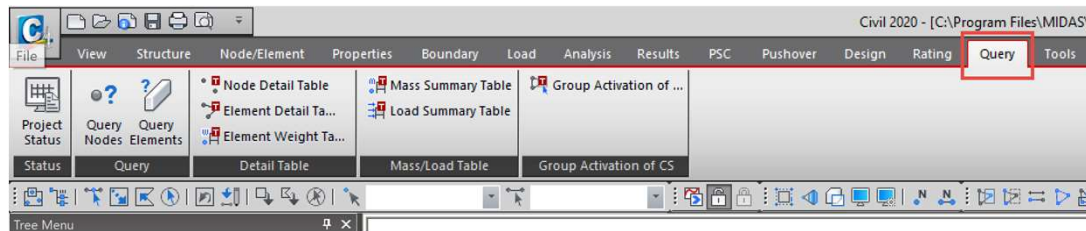


Midas Expert Network – Tips from the Experts

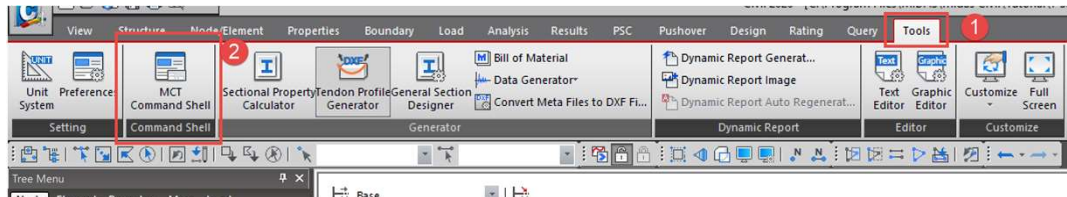
Benjamin Blasen, P.E., Bridge Engineer & Project Manager at Jacobs

The tips/tricks I've found very useful are the Query tools, using the MCT command shell, and turning on the display of frame and plane thicknesses in the Hidden Option Display menu.

Query Tool



MCT Command Shell



How to use MCT Command Shell: <https://midasoft.teachable.com/courses/useful-tips/lectures/14002739>

Frame & Plane Thickness

