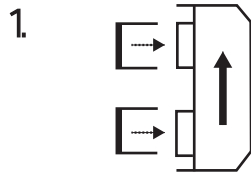


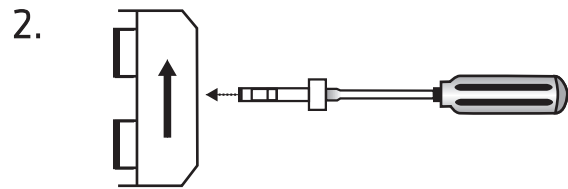
AMFLO® SONIC DryX



Silikonpads auf Sensorkopf anbringen

Fix silicon pads on sensor head

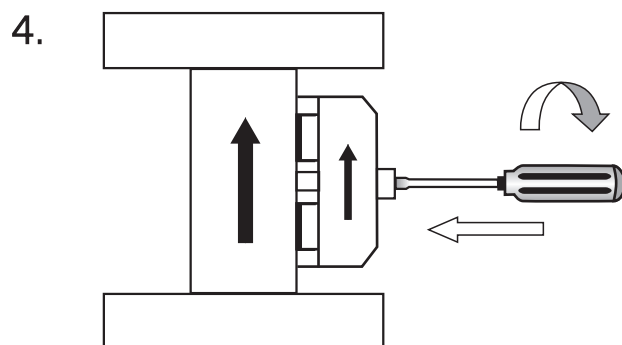
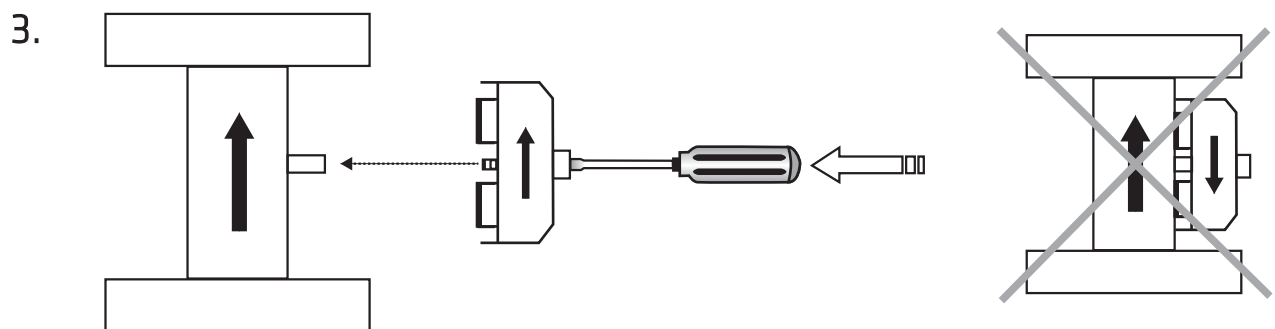
Fixer les plaquettes de silicone sur le capteur



Schraube zentrieren durch drücken mit dem

Schraubenzieher Centre screw by pushing it in with the screwdriver

Centrer la vis en appuyant avec le tournevis



Anziehen bis Sensorkopfseiten bündig

sitzen Screw until sensor head ends are flushed with tube

Serrer jusqu' en bon positionnement du capteur à fleur sur le tuyau