

This is a chapter from the LUCIS Helps. The links do not work in pdf format. Use the LUCIS Helps for full functionality.

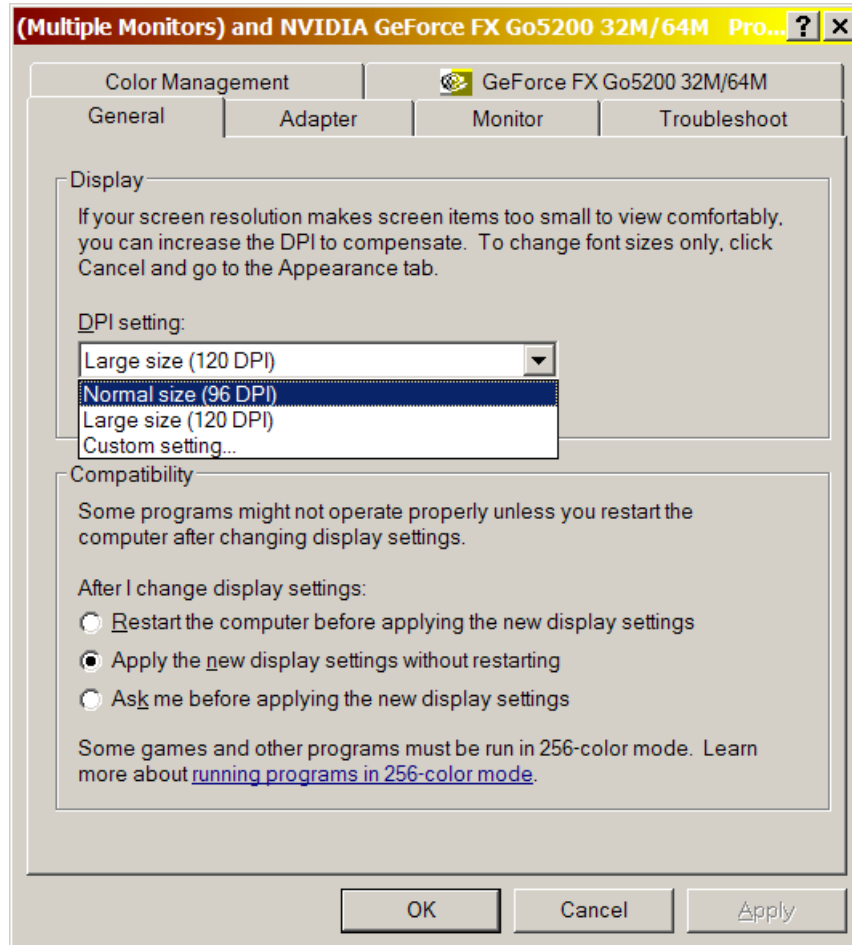
[Home](#)

Windows Font Settings for LUCIS Software

If your LUCIS windows appear to have text clipped off or otherwise not displaying properly check your Windows font settings. Non-standard settings may cause the LUCIS Software to display improperly.

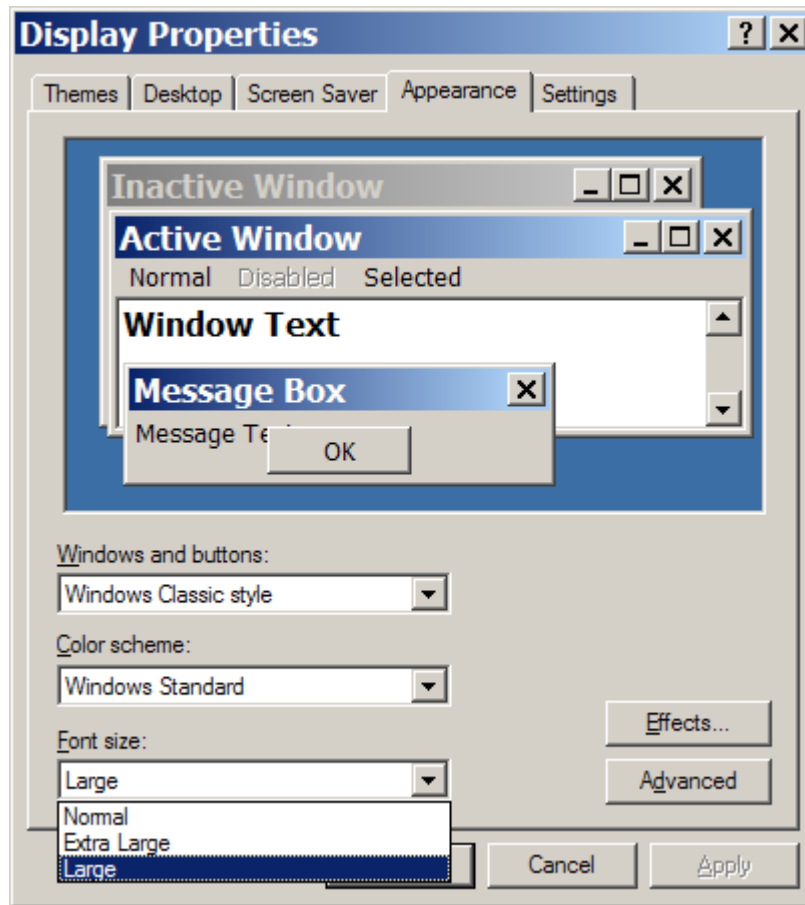
DPI Setting for Windows XP [\(Back to Top\)](#)

To access the Windows XP DPI setting, point to an unused portion of your desktop, right-click, select Properties, click on the Settings tab, then click the Advanced button. If the DPI setting is other than Normal size (96 DPI) then the LUCIS Software (and some other software) will not display properly. If you want a larger font on the desktop change the Appearance Font size (see next screen illustration.).



Font Size Setting for Windows XP [\(Back to Top\)](#)

To access the Font size setting for Windows XP, point to an unused portion of your desktop, right-click, select Properties, then click on the Appearance tab. According to our testing he LUCIS Software should display properly using both "Normal" and "Large" font settings.



Font Size Setting for Windows 2000 [\(Back to Top\)](#)

To access the Font Size setting for Windows 2000, point to an unused portion of your desktop, right-click, select Properties, click on the Settings tab, then click the Advanced button. If the Font Size setting on the General tab is other than Small Fonts then the LUCIS Software (and some other software) will not display properly. This Font setting is the equivalent to the Windows XP Normal DPI setting illustrated previously (Microsoft changed its description). There is no equivalent in Windows 2000 for the Windows XP Appearance font size for the Desktop or Windows so it cannot be adjusted independent of the General setting.

