



Sample Designs

Once you have an idea of the elements you want in your garden, you can start to cost out what's possible for your space. Here are three garden designs showing sample crops that can be harvested during the school year in the Southern United States. To adjust for your area, talk to your local extension agent.

Starter Teaching Garden

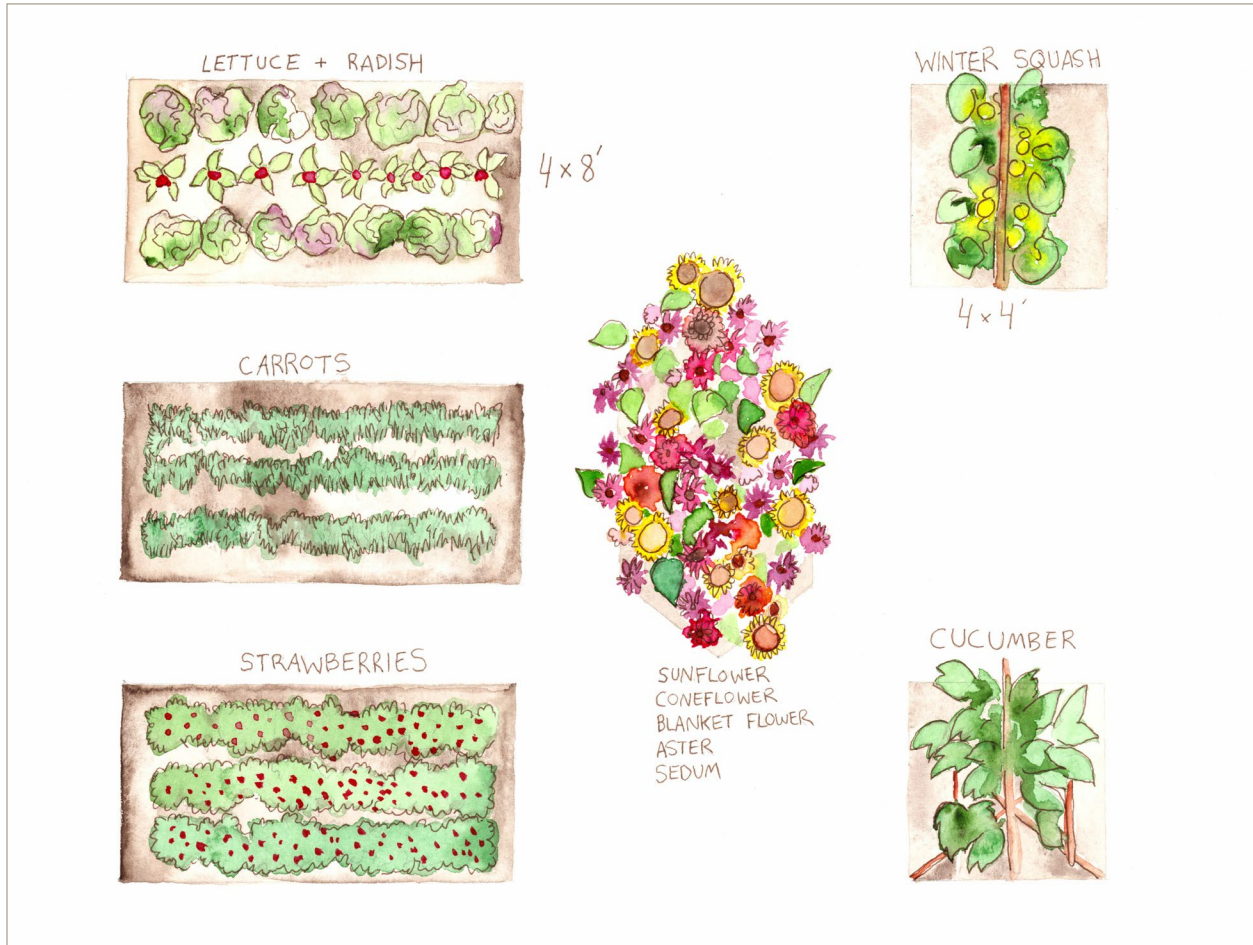
If your primary goal is providing a hands-on learning opportunity, a basic teaching garden can consist of a few simple beds targeting crops that produce during the school year. This low-cost design features raised beds planted with vegetables, along with a small **pollinator garden** or **insectary** that can double as a cut flower garden. Including flowering plants in your design increases the learning opportunities for your garden as a whole.

Materials:

- 4' x 8' raised garden beds (4)
- 4' x 4' raised garden beds (2)
- Raised bed climbing trellis (2)
- Mixed vegetable and flower seeds
 - Beets
 - Broccoli
 - Carrots**
 - Chard



- Cucumber
- Lettuce
- Radishes
- Winter squash
- Sunflower
- Nasturtiums
- Shrubs/perennials:
- Strawberries
- Basil
- Rosemary
- Chives
- Coneflower
- Blanket flower
- Asters/sedum



Starter Teaching Garden:
A basic teaching garden includes a mix of fruits, vegetables, and flowers.



School Food Garden

For a larger school whose goals include in-season food production for a cafeteria or food service program, the following design includes a variety of vegetables, flowers, and fruit:

Materials:

- 4 x 8' raised beds (12)
- 3.5' x 4.5' **hexagonal raised bed** (1)
- 1 compost bin
- 1 tool shed
- 1 in-ground pumpkin patch
- Mixed vegetables, flowers, and shrubs as noted previously, plus:
 - Raspberries
 - Tomatoes



A larger food garden includes space for vining squash, fruiting shrubs, and tomatoes.

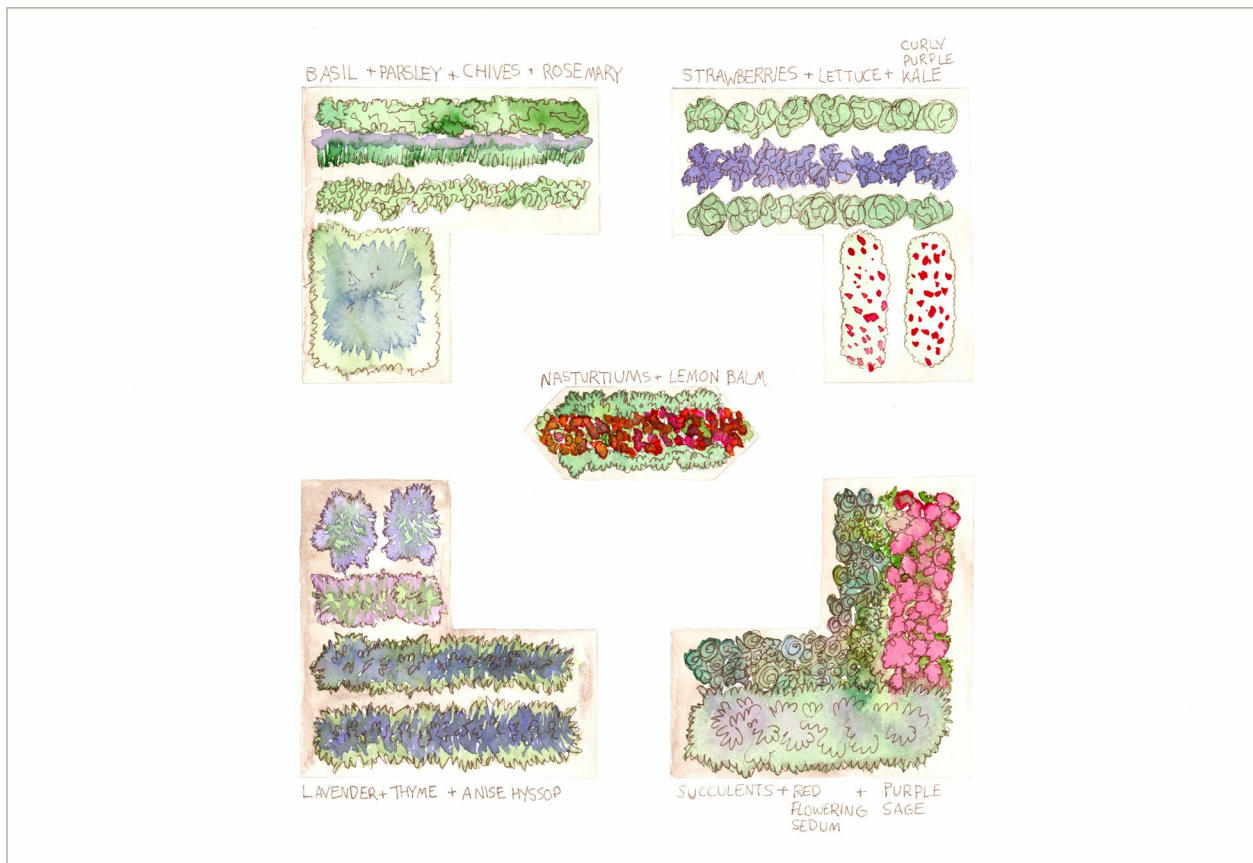


Primary Sensory Garden

Thematic gardens are a great way to connect children with nature using an unconventional angle. This sensory garden targets children in the primary grades by engaging their senses of touch, smell, sight, and taste. The specific selection of plants in a variety of textures encourages handling, and in some cases, eating.

Materials:

- 3' x 6' **L-shaped raised beds**
- 3.5' x 4.5' **hexagonal bed**
- Seedlings:
 - Taste:* Basil, parsley, chives, rosemary, lettuce, strawberries
 - Smell:* Lavender, thyme, **anise hyssop**, lemon balm
 - Sight:* Nasturtiums, speckled lettuces, purple curly kale
 - Touch:* Succulents, red flowering sedum, purple sage



An elementary sensory garden offers plants that encourage hands-on exploring.