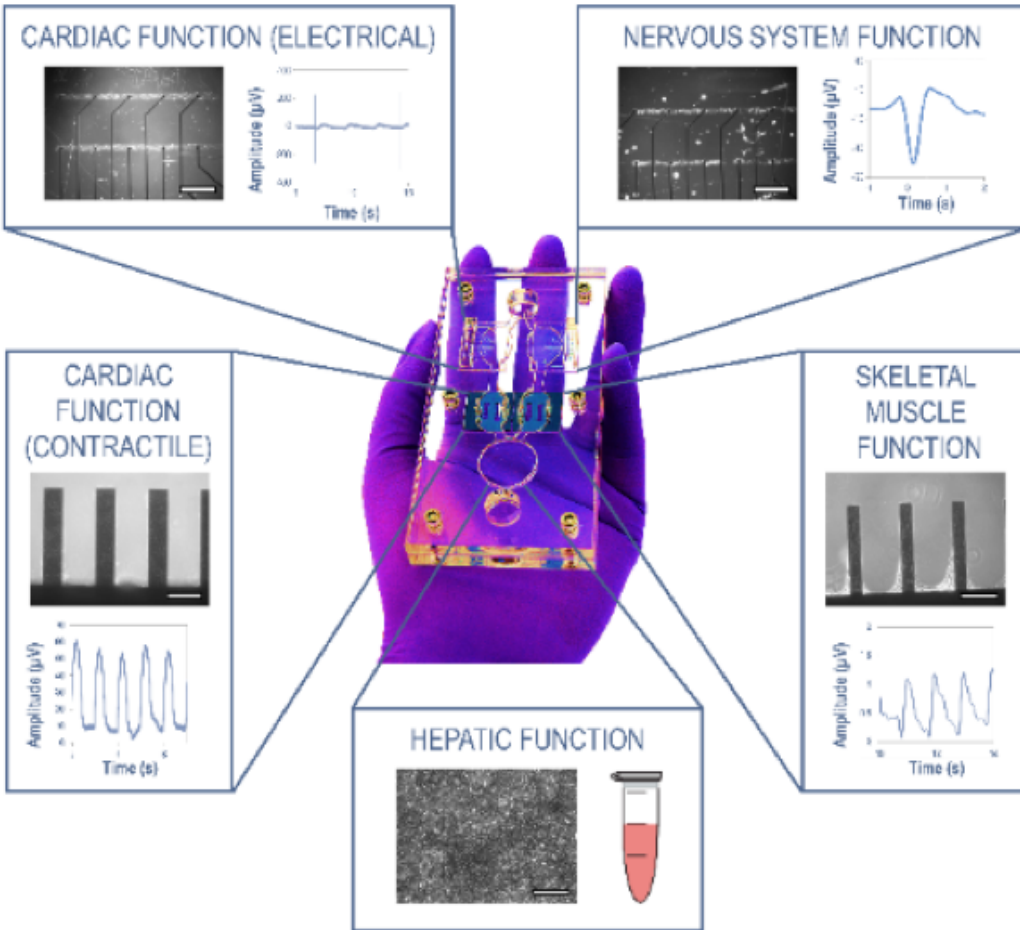


## Toxicology Testing & Efficacy Evaluation for Drug Discovery



**IN VITRO PKPD**  
MODELING TO PREDICT  
IN VIVO RESULTS



**PHENOTYPIC MODELS**  
OF RARE DISEASES



**THERAPEUTIC INDEX**  
DETERMINATIONS OF  
LEAD COMPOUNDS

### ABOUT THE TECHNOLOGY

Human-on-a-Chip®

**Functional in vitro models that accurately predict** how new drug candidates will impact the human body - something that has previously required animal testing or human clinical trials to determine.

*PKPD in vitro models  
to predict  
in vivo results*

[SALES@HESPEROSINC.COM](mailto:SALES@HESPEROSINC.COM)

### CUSTOM R&D SERVICES

Contact our multi-disciplinary team of scientists & engineers to find out how we can add value to your next project

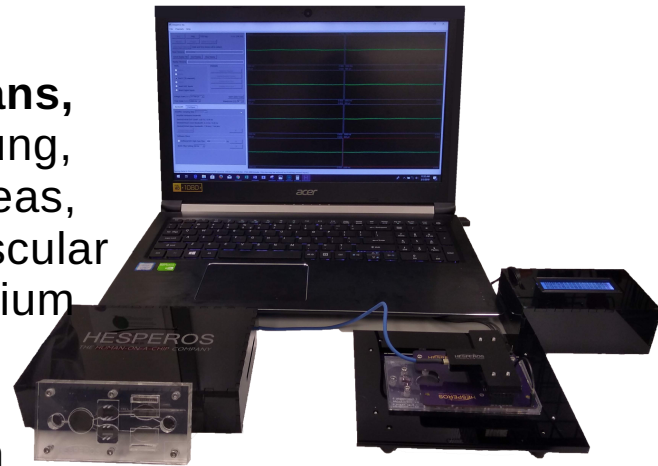
# Human-on-a-Chip®

Functional, in vitro models that accurately predict how the human body will respond to new drug candidates.

## WHAT'S ON EACH CHIP?

**Toxicology models with interlinked organs, including combinations of:** heart, liver, lung, brain, skin, muscle, GI tract, kidney, pancreas, endocrine, bone marrow and the neuromuscular junction in a **serum free**, recirculating medium utilizing a **pumpless** platform.

This capability is unique to Hesperos as an industry first.



## TESTING SERVICES

.....  
*Current Available Models*

**2 Organ**

Heart-Liver  
Neuromuscular Junction (NMJ)

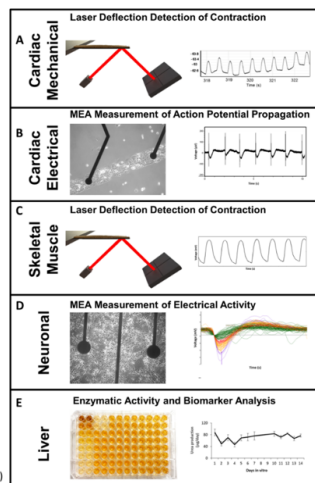
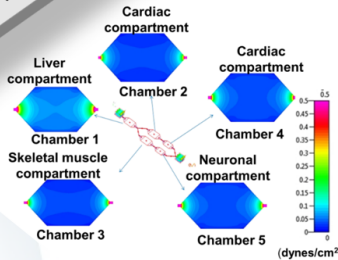
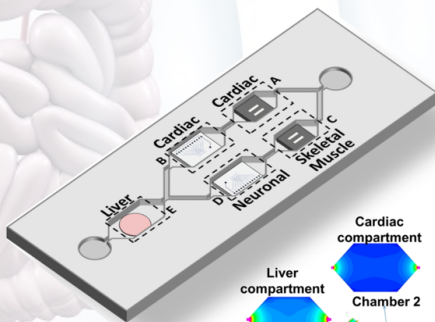
**3 Organ**

Heart-Liver-Cancer

**4 Organ**

Heart-Liver-Skeletal Muscle-Neuron

**Custom Designed Multi-Organ Systems**



## ABOUT THE COMPANY

.....

Hesperos, Inc is a rapidly growing biotechnology company leveraging its Human-on-a-Chip® systems to accurately predict in vitro, human responses to new drug candidates

This breakthrough technology is accelerating drug discovery and opening the door for research into new treatment areas, especially for rare diseases previously considered untreatable.

Company founders are largely credited with developing this field of research and have received international acclaim for their work.

### FOUNDED BY EXPERTS

MICHAEL SHULER, PHD  
PRESIDENT & CEO



JAMES HICKMAN, PHD  
CHIEF SCIENTIST

