

قطيفان للمشاريع  
QETAIFAN PROJECTS

# Qetaifan Island North

*Residential Towers*



@qetaifanprojects

WWW.QETAIFANPROJECTS.COM

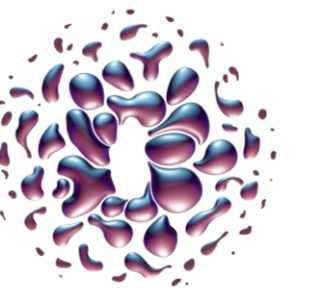




# DISCLAIMER

## Disclaimer:

This document is confidential and prepared by Qetaifan Projects W.L.L. ("QP"). QP shall not be liable for any error, omission or misrepresentation in such materials. QP shall not be liable for loss or damage incurred as a result of third-party claims; or for any economic or any other loss and shall not incur any liability for any damages resulting from, or any way connected to the use of this document. No guarantee of any kind is implied or possible where projections of future conditions are attempted. QP accept no responsibility to any other person to whom this presentation is shown or into whose hands they may come.





- ❖ No. of Residential Units
- ❖ List of Amenities
- ❖ Price Range
- ❖ Tower Layouts – Sizes & Unit Type

# TABLE OF CONTENT



Stakeholders

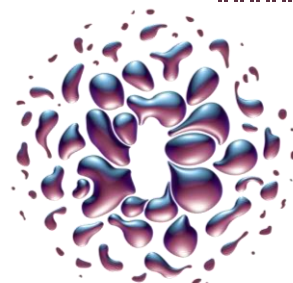


Strategic Partners



Lead Design Consultant **ATKINS**  
Financial Advisor & Bank **al khaliji KPMG**

Hospitality & Water Park Operator & Lead Vendor





## No. of Residential Units per Tower

Tower	Tower Type	No. of Residential units ranging from	No. of Retail Units ranging from
West Waterfront (W)	High-Rise Mixed-Use	80 - 140	1 - 2
South Waterfront (SH)	High-Rise Mixed-Use	120 - 240	1 - 3
South Waterfront (SM)	Mid-Rise Mixed-Use	10 - 30	1 - 2

*\*Projected number of residential units once the Island is fully completed.*

*\*The final number of residential units still depends on the sub developers, as QP's strategy is selling service land plots.*



## Price Range per Residential Unit (USD)

Tower	Tower Type	Residential Unit Price Range per sqm (USD)	Retail Unit Price starts per sqm (USD)
West Waterfront (W)	High-Rise Mixed-Use	3,000 - 4,000	4,000
South Waterfront (SH)	High-Rise Mixed-Use	3,500 - 4,500	4,000
South Waterfront (SM)	Mid-Rise Mixed-Use	4,500 - 5,500	6,500

*\*The final price per sqm of each residential and retail unit depends on the sub developers, as QP strategy is selling service land plots.*



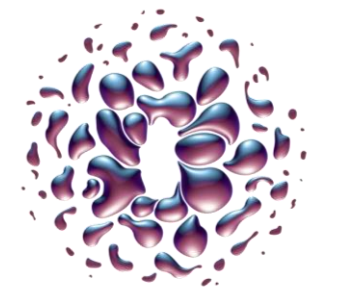
# QIN AMENITIES



WATER PARK

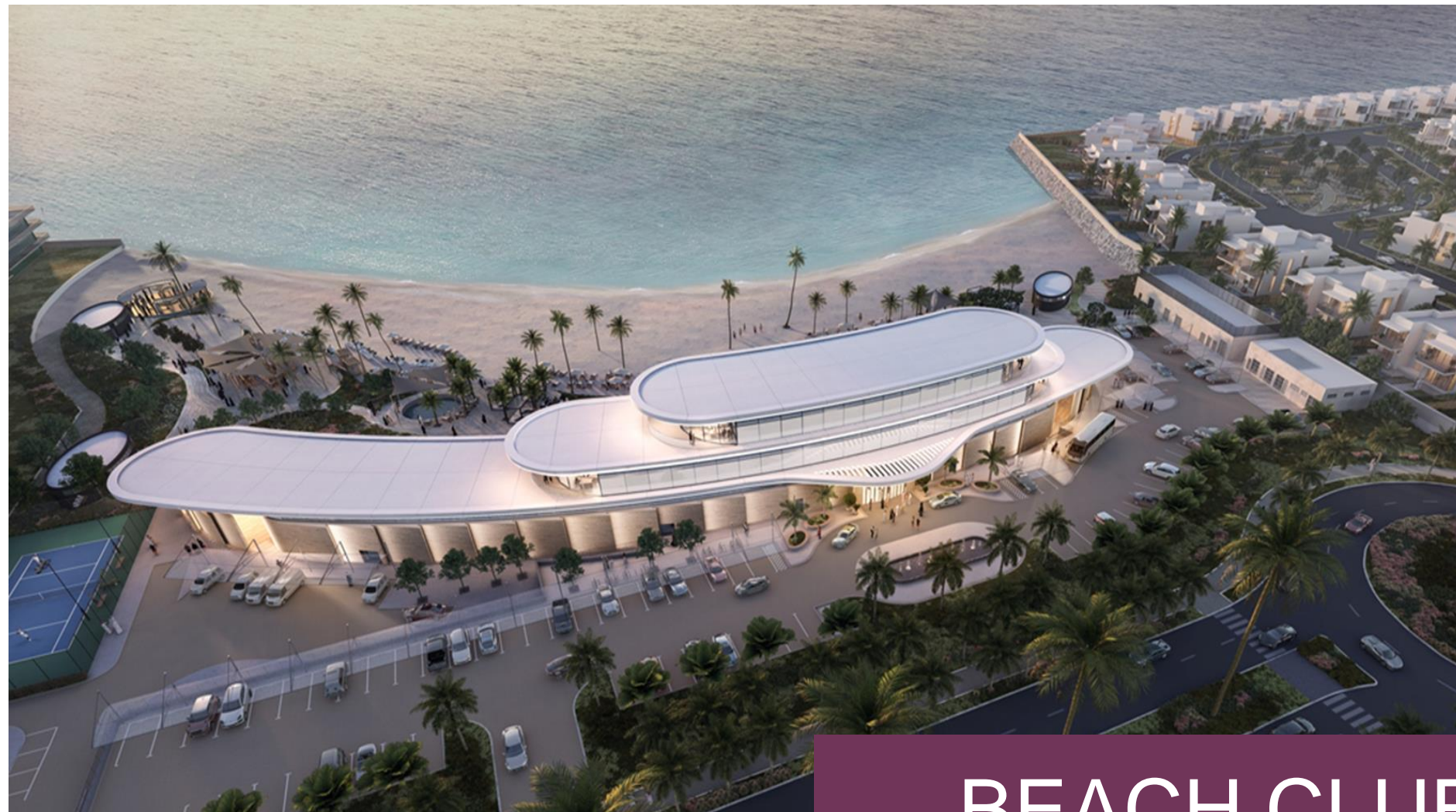


HOTEL





## QIN Amenities cont.



BEACH CLUB



RETAIL





# QIN Amenities cont.

## COMMUNITY FACILITIES

Medical Center



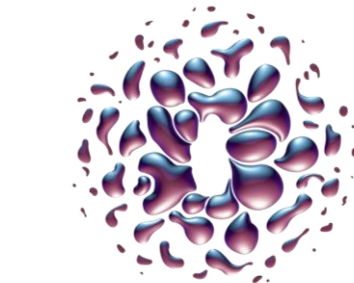
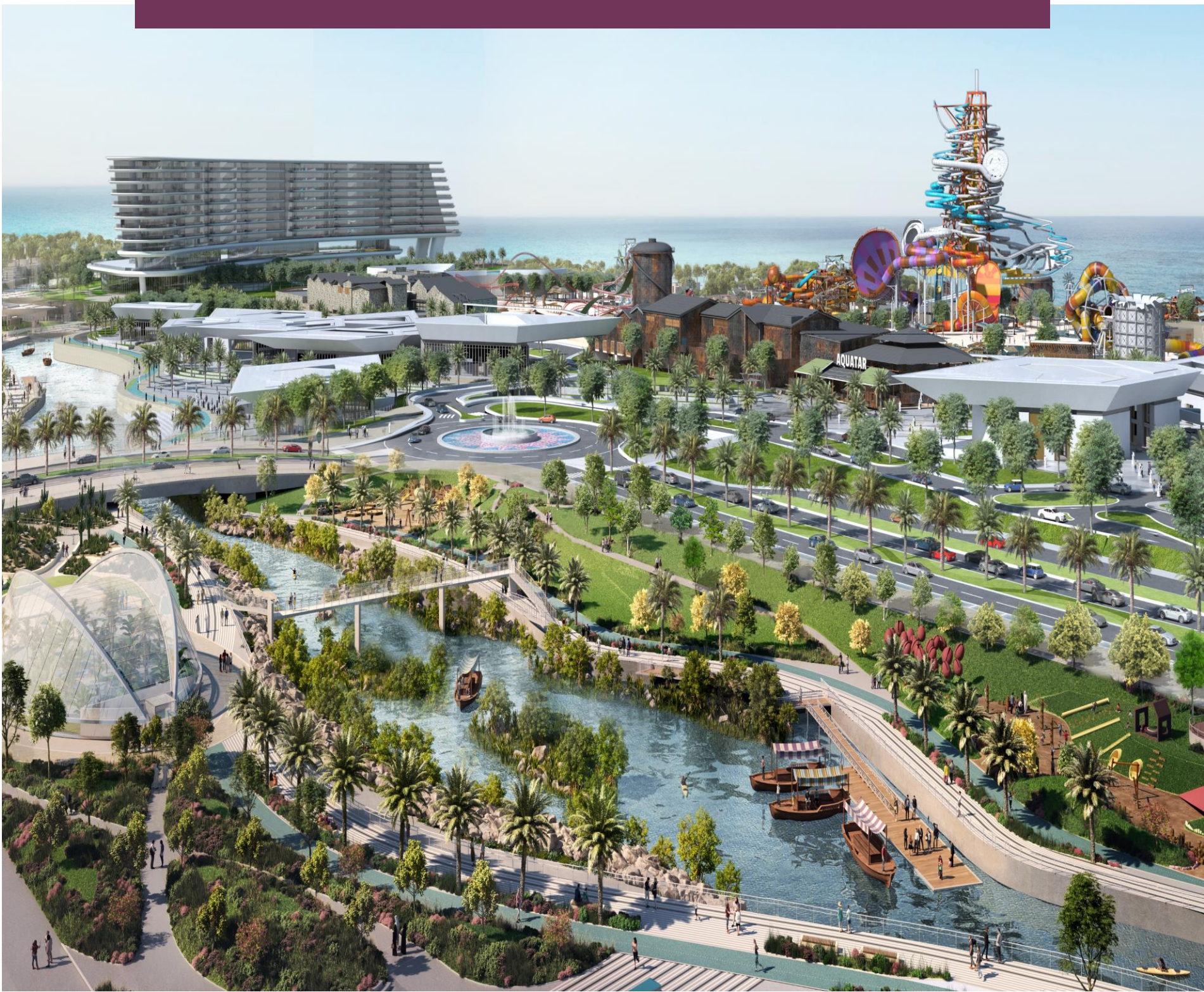
School



JUMMA MOSQUE



## LINEAR PARK





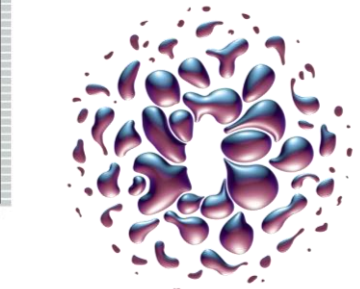
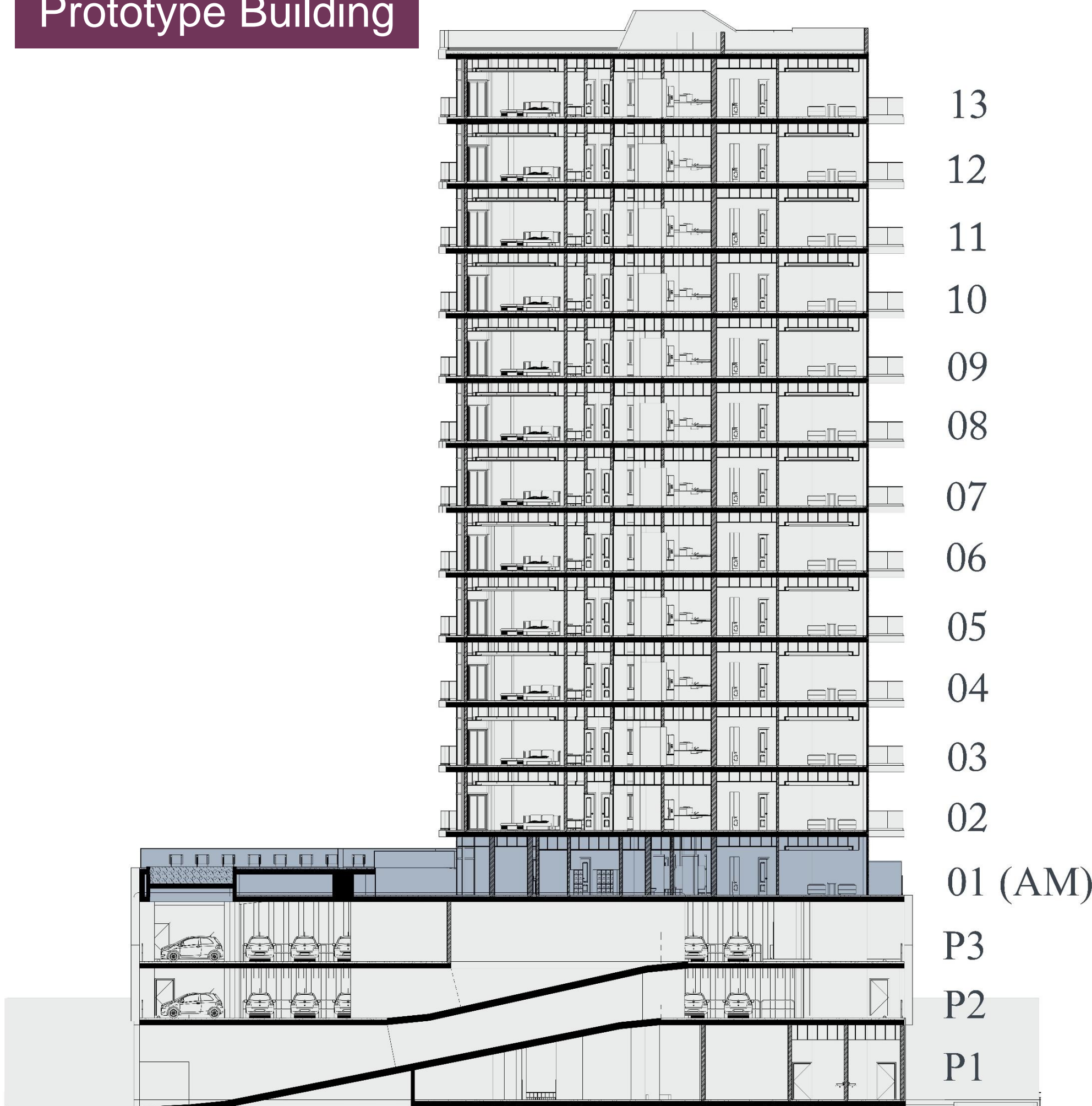
W 3D View





# West Waterfront Tower (W)

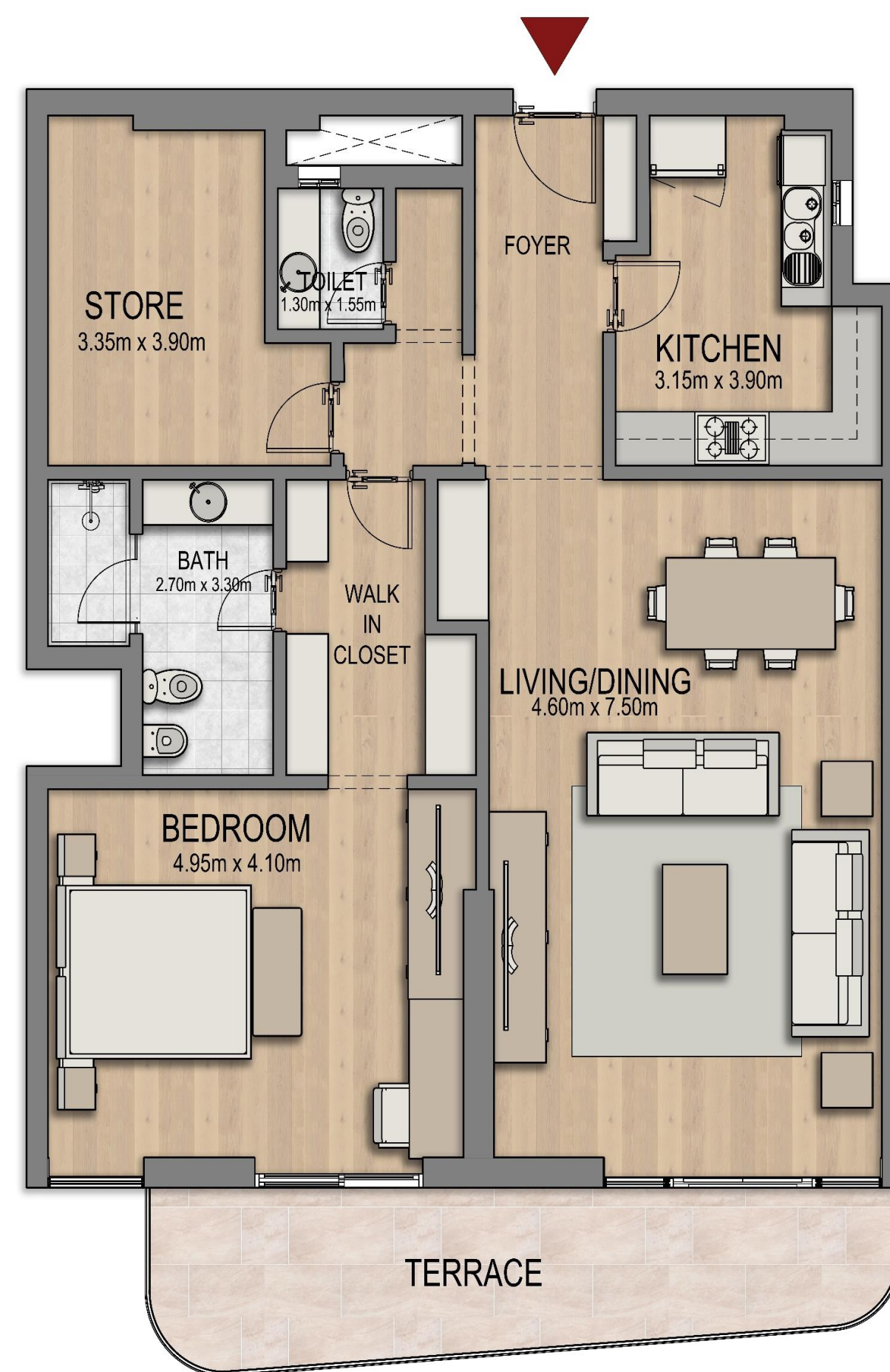
## Prototype Building



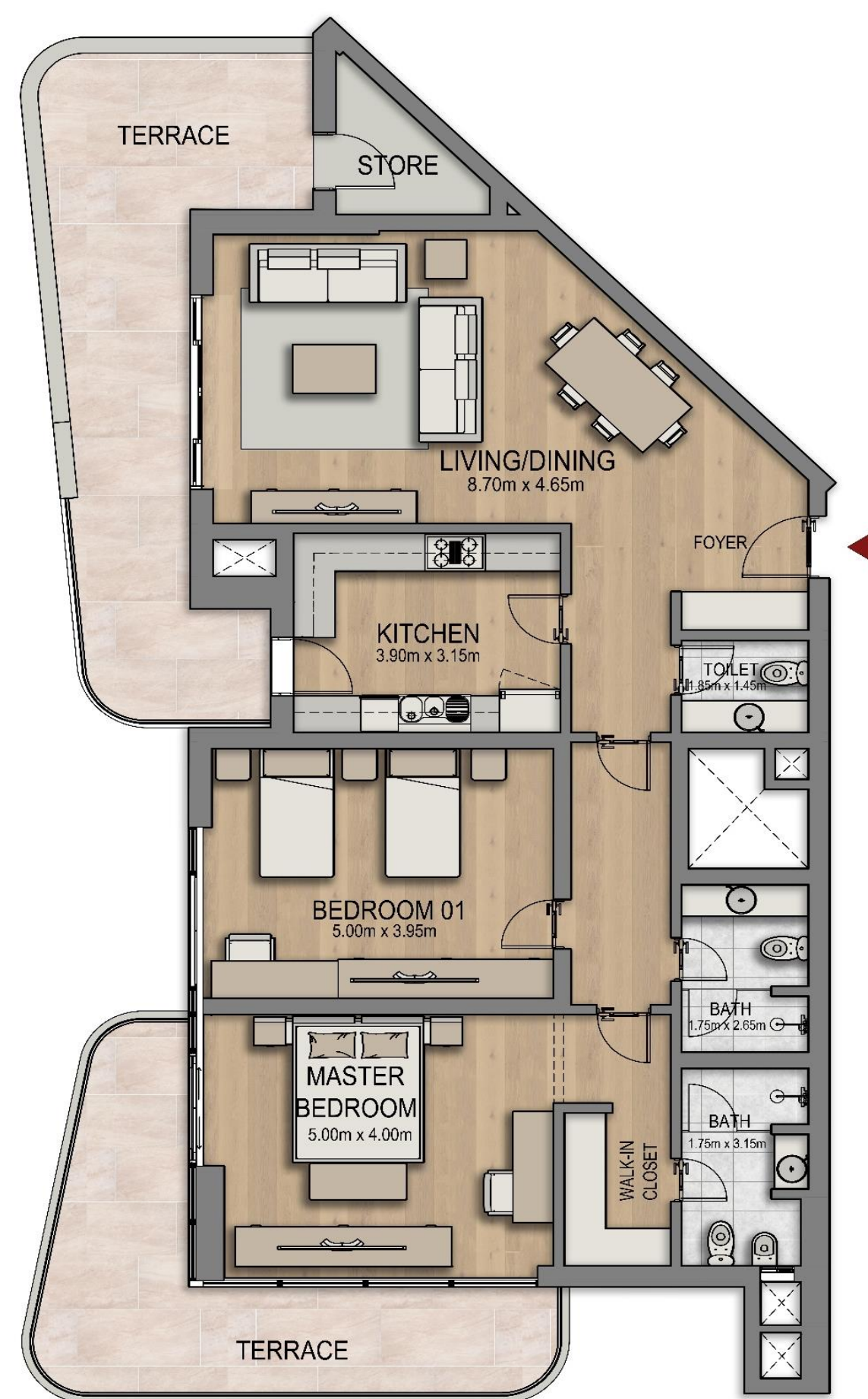


# West Waterfront Tower (W) Typical Units

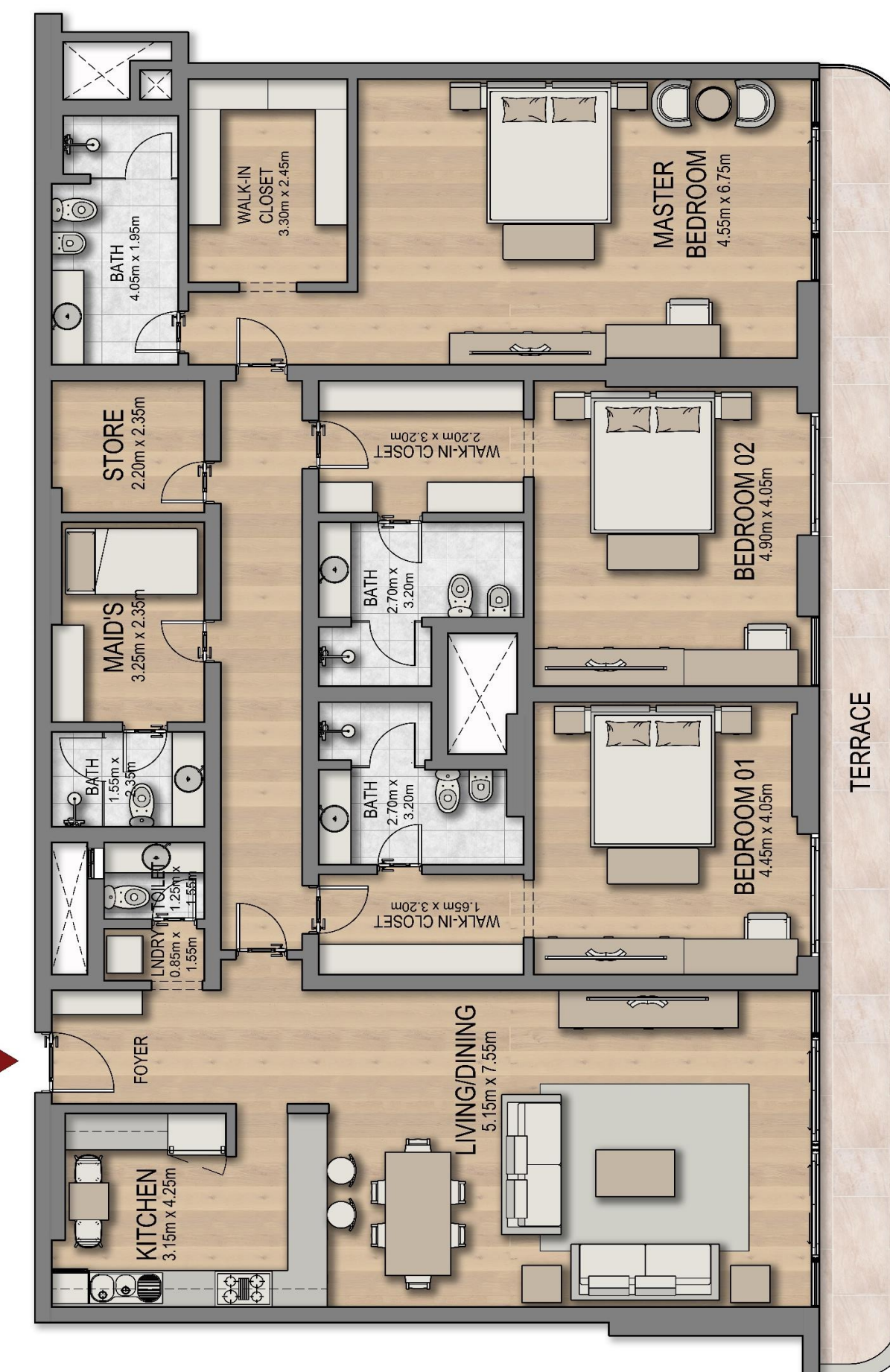
## 1-Bedroom Apartment



## 2-Bedroom Apartment

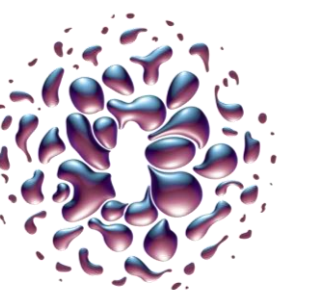


## 3-Bedroom Apartment





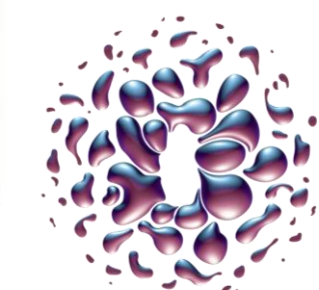
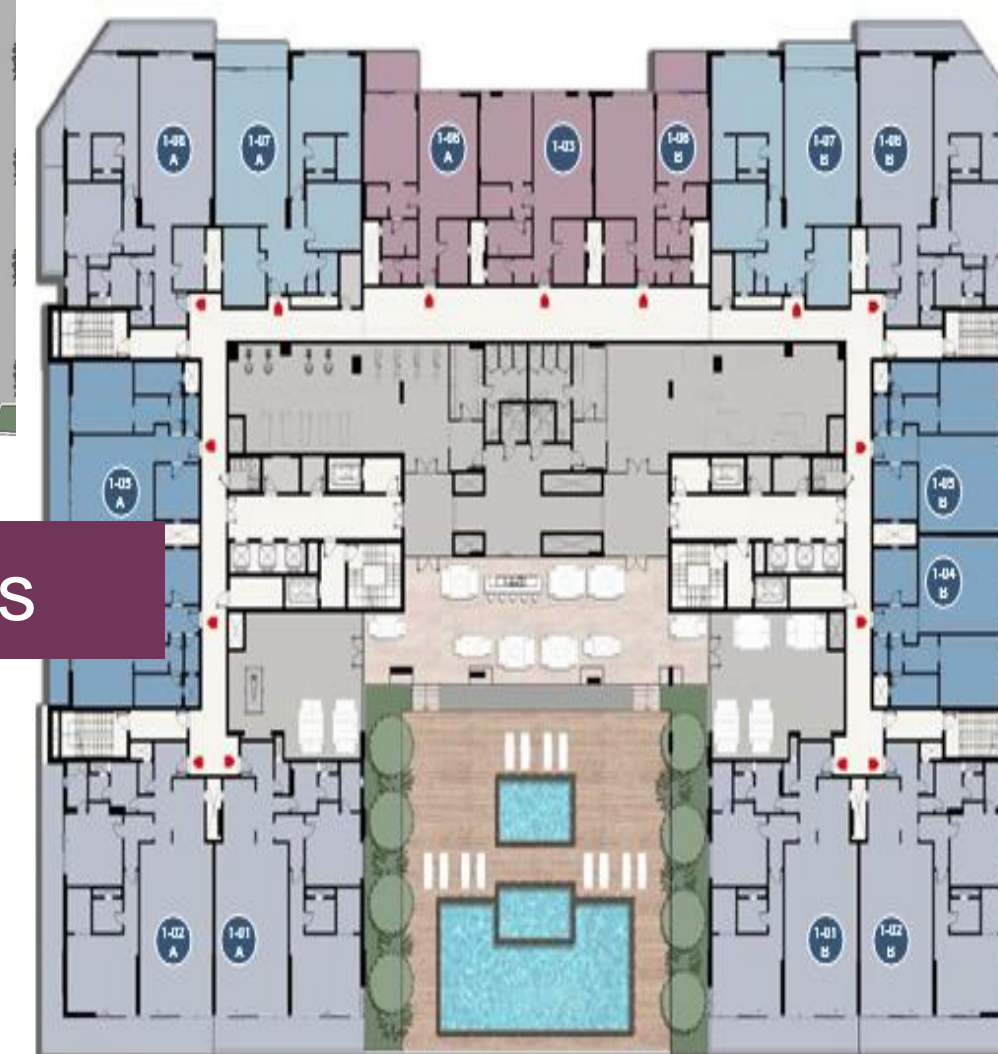
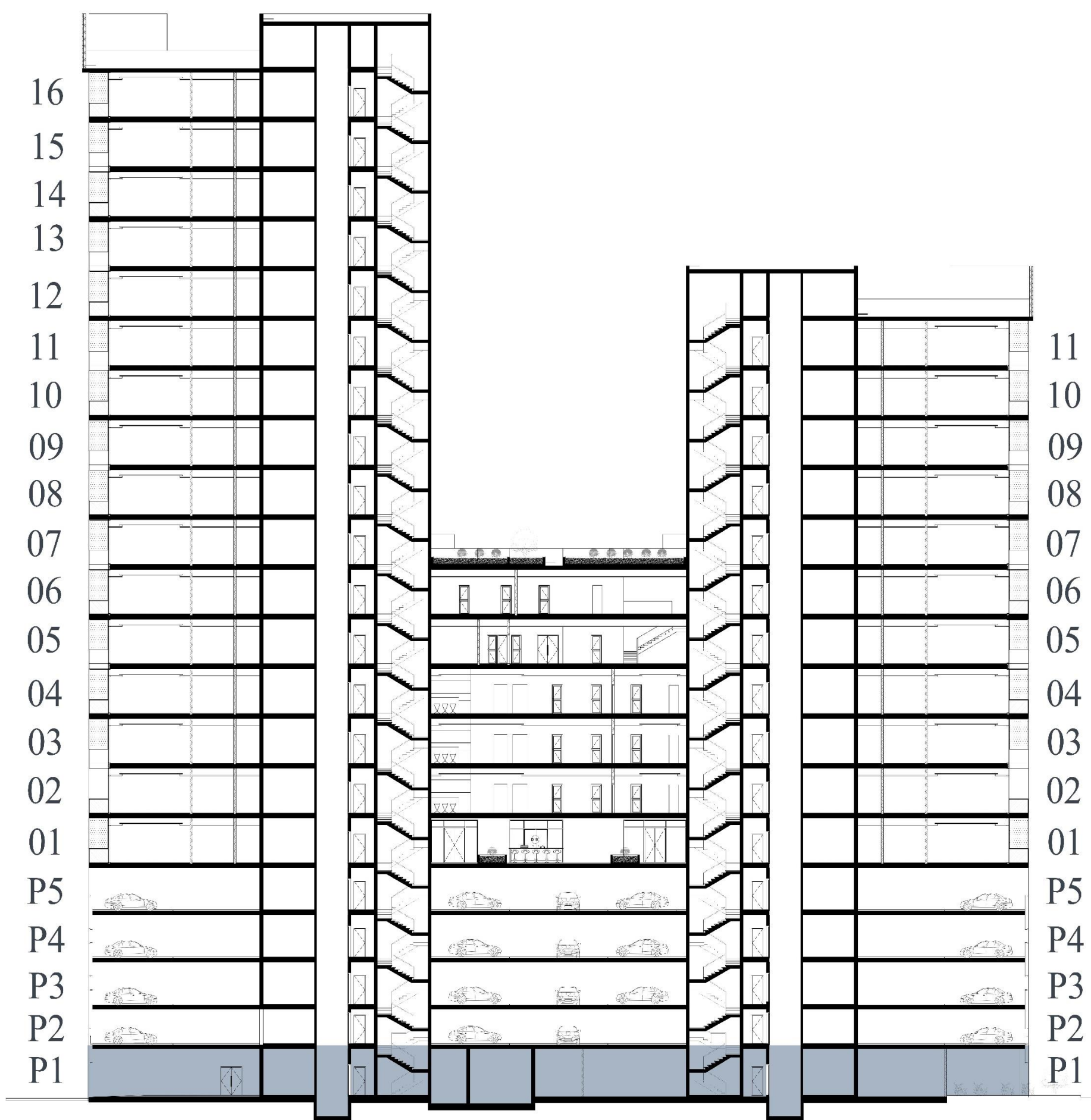
# SH 3D View





# South Waterfront High-Rise Mixed-Use Tower (SH)

## Prototype Building



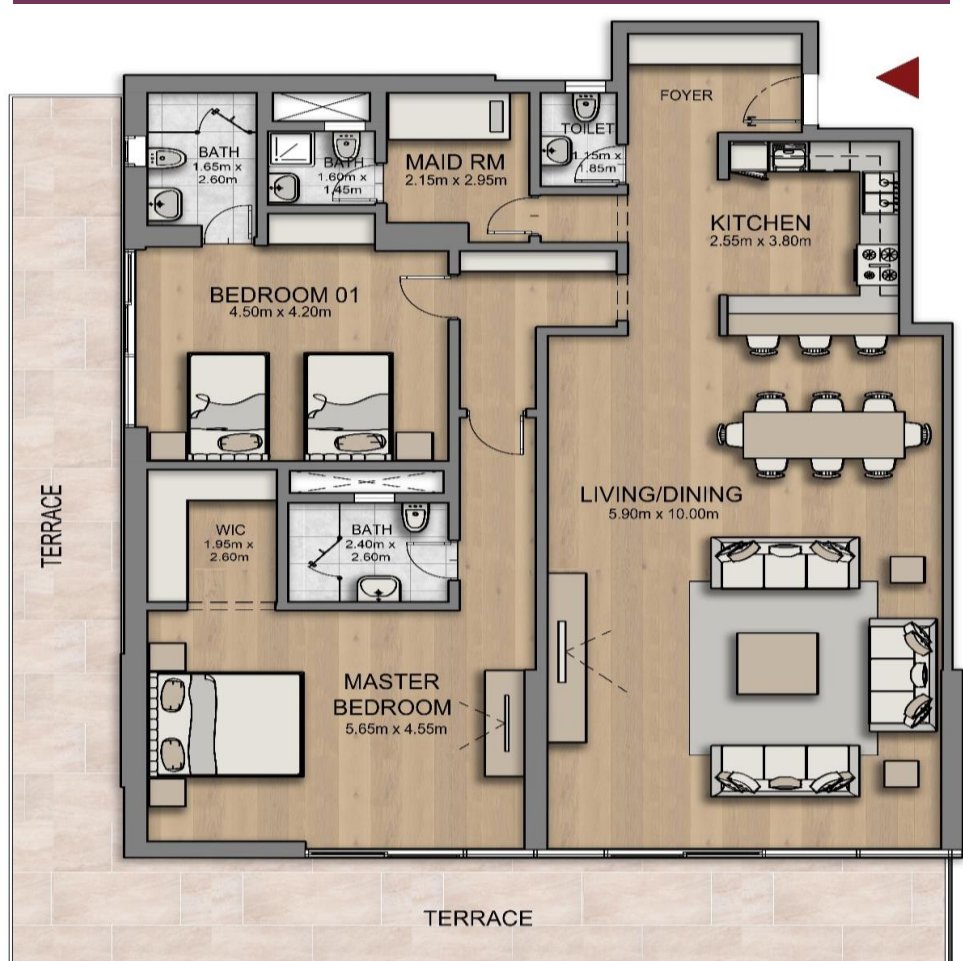


# South Waterfront High-Rise Mixed-Use Tower (SH) Typical Units

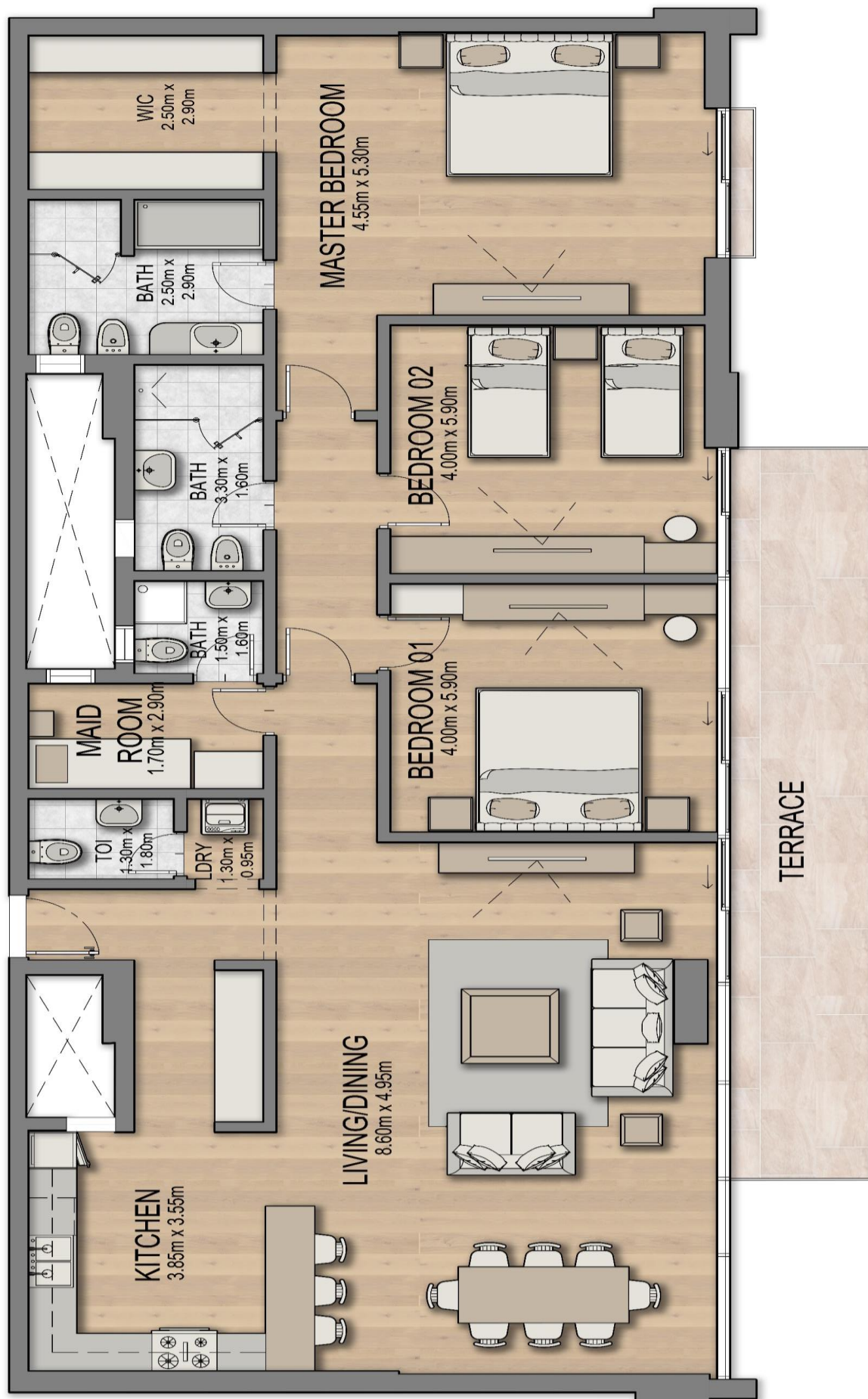
## 1-Bedroom Apartment



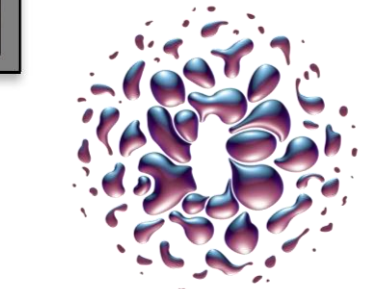
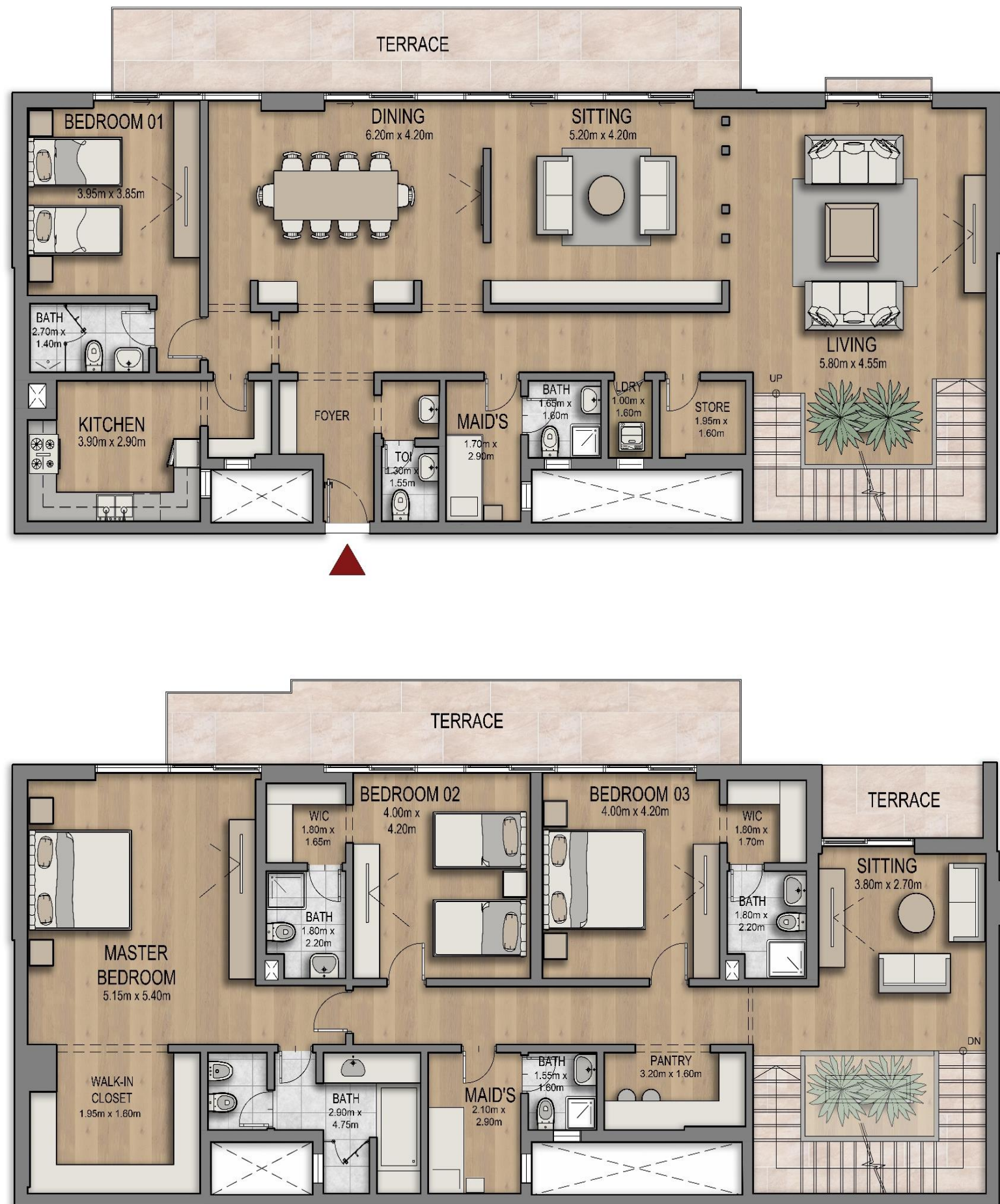
## 2-Bedroom Apartment



## 3-Bedroom Apartment



## Duplex Villa







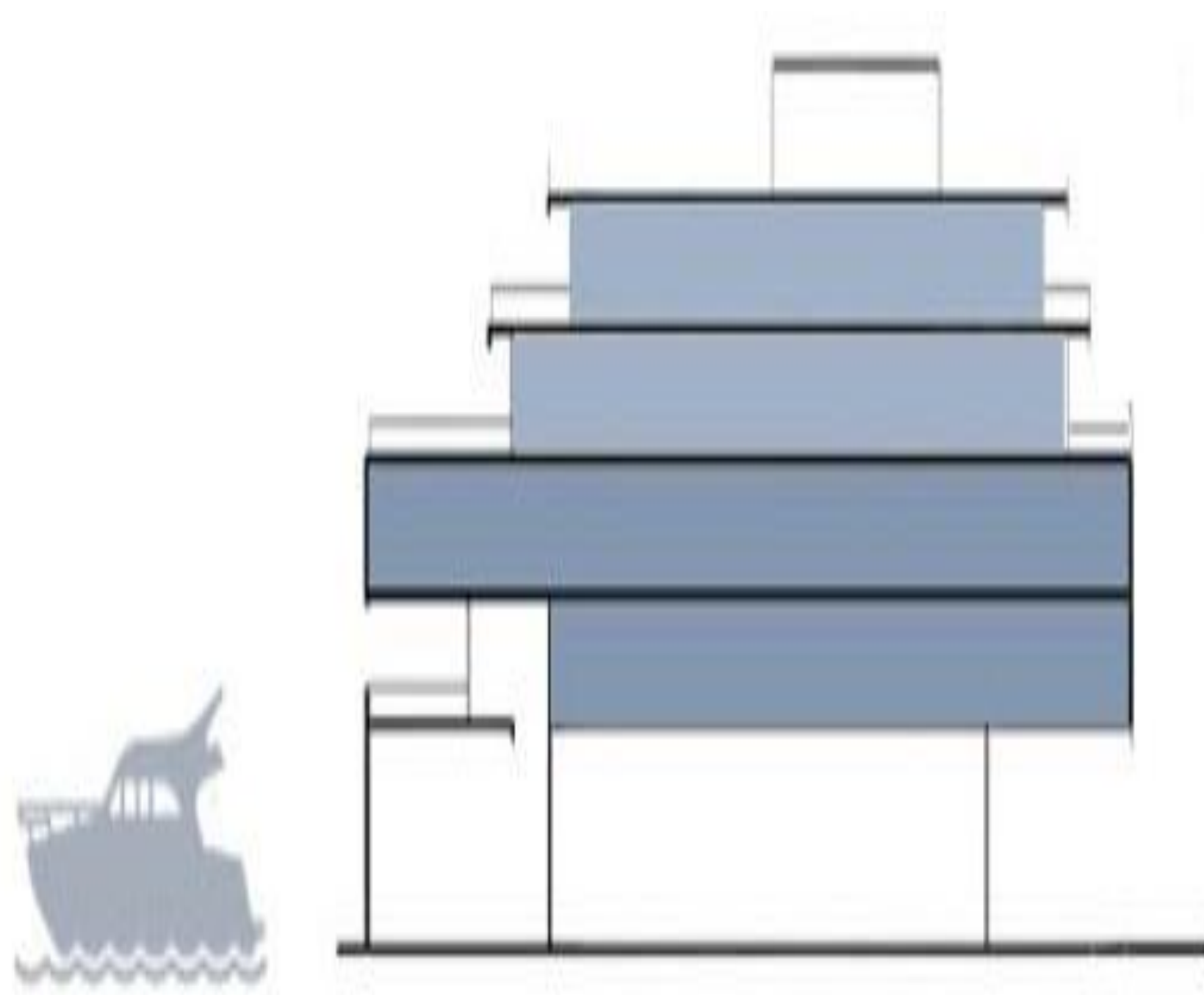
# SM 3D View





# South Waterfront Mid-Rise Mixed-Use Tower (SM)

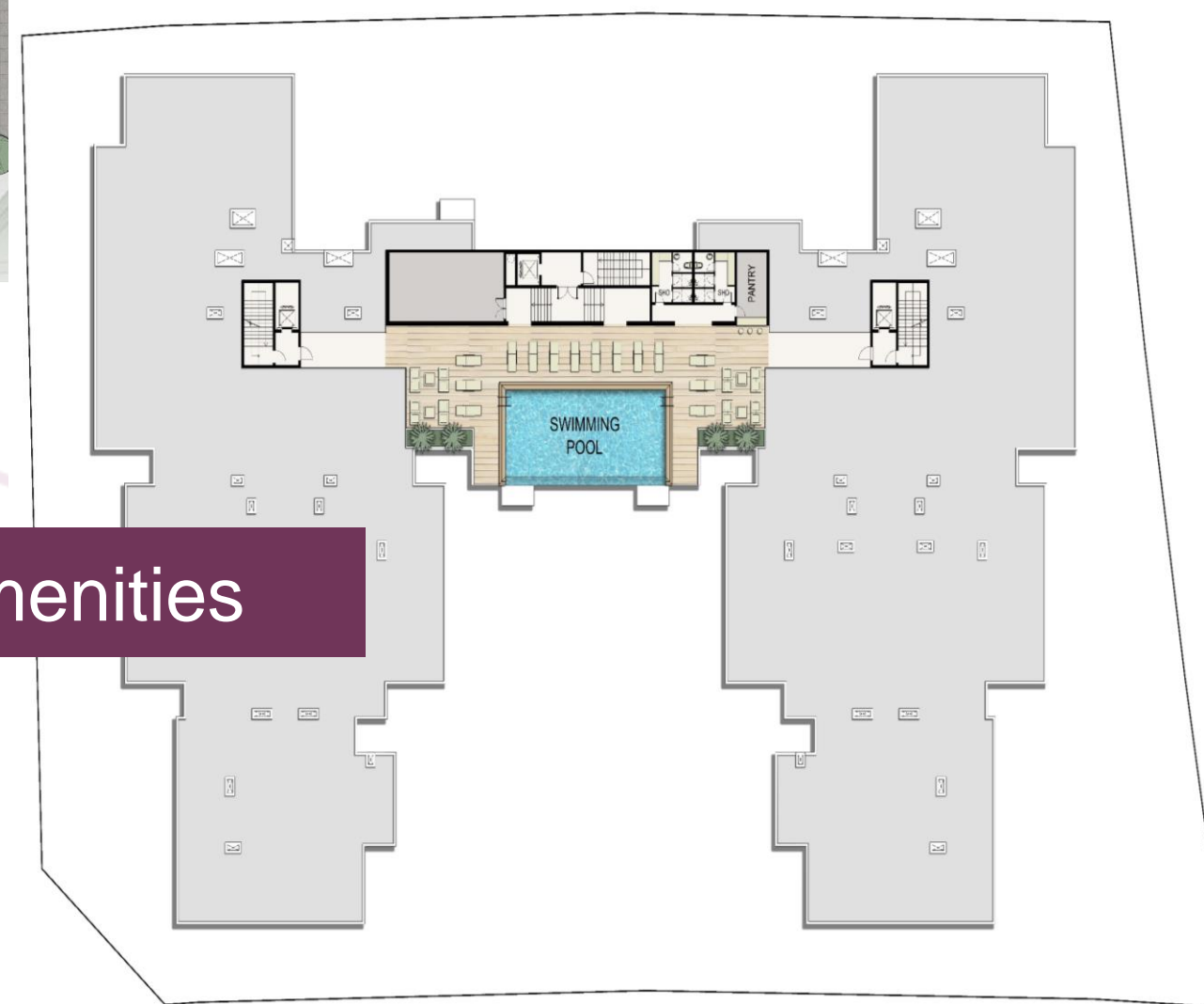
## Prototype Building



## Retail (2) Units



## Amenities





# South Waterfront Mid-Rise Mixed-Use Tower (SM) Typical Units

Typical Villa Entrance  
(Lobby View)



4-Bedroom Villas  
(4 Floors / 4 BR + Maid's Room + Majlis)







THANK YOU