

TOPAS® SONIC

Ultrasonic smart water meter
for domestic networks

INTEGRA
METERING



Intelligent meter management

- Powerful data and event logger: volume, alarms, lifetime, leakage, temperature and reverse flow
- Measurement and decision-making based on accurate data



Smart design

- Very low pressure drop enabling stable water pressure
- Avoids dirt and bacteria adhesion
- Direct sensor signal for stable measurements and high precision



High level of customization

- Telegram
- Alarms and events
- Internal data log
- Emission patterns



Designed for robustness

- IP 68 certification
- Tamper proof by design
- T50
- Up to 16 years lifetime

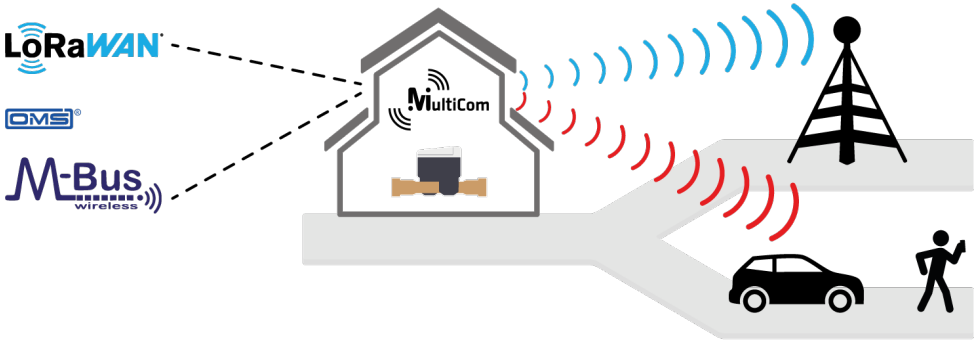
TOPAS® SONIC

The definition of precision, performance, and connectivity

With an R500 measurement class, the TOPAS® SONIC ensures high accuracy even in low flow conditions. This smart meter features a broad physical compatibility from DN 15 to DN 50 and is IP 68 certified for robustness, offering a reliable choice across diverse environments with consistent, long-lasting performance over a 16-year lifespan.

About the MultiCom function:

- Provides redundancy and continuity of communication, minimizing the risk of data loss.
- Simplifies network management thanks to its versatility and easily adapts to long-term technological developments.
- Enables simultaneous communication with different protocols: LoRaWAN 868 MHz and wM-Bus 868 MHz.



Flexible MultiCom communication:
wM-Bus and LoRaWAN (868MHz) available separately or simultaneously



Different data gathering systems available: walk-by, drive-by, fixed network



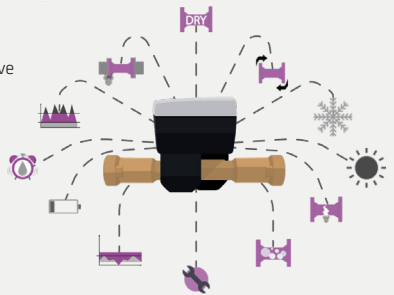
ParamApp® for Android, dedicated to: commissioning, configuring and diagnosing smart meters

Smart water management

TOPAS® SONIC can detect a large panel of events, therefore ensuring proactive network management and minimizing unaccounted-for water losses. Configuration and diagnostics in the field are simplified by the ParamApp®.

Events and alarms covered

- Dry
- Reverse meter
- Frost
- Heat
- Burst
- Air bubble
- Service flags
- Reverse flow
- Battery lifetime
- Water detection
- Overload
- Leakage



INTEGRA Metering AG
Ringstrasse 75
CH-4106 Therwil

+41 61 725 11 22
info@integra-metering.com
integra-metering.com



INTEGRA Metering AG
Ringstrasse 75
CH-4106 Therwil

+41 61 725 11 22
info.ch@integra-metering.com
ch.integra-metering.com



INTEGRA Metering SA
Rue de l'Oyonne 1
CH-1800 Vevey

+41 21 926 77 77
info.vevey@integra-metering.com
ch.integra-metering.com/fr



INTEGRA Metering GmbH
Kurt-Schumacher-Allee 2
DE-28329 Bremen

+49 421 871 64 0
info.de@integra-metering.com
de.integra-metering.com



INTEGRA Metering SAS
Rue du Font Grasse, 12
FR-31700 Blagnac

+33 5 61 11 23 56
info@integra-metering.com
fr.integra-metering.com



INTEGRA Metering Asia Pte. Ltd.
10 UBI Crescent, #04-21
UBI Techpark, Singapore 408564

+65 6899 1980
pradeep.hada@integra-metering.com
integra-metering.com



INTEGRA Metering AG DMCC
Unit No: 43
DMCC Business Centre, Level No. 5,
Jewellery 5 Complex 2, Dubai, UAE

+97 155 605 2905
info.jmme@integra-metering.com
integra-metering.com