

APPENDIX 3: OUTDOOR SQUASH PACKAGE

Innovating Our Parks and Playing Spaces – A Case for Taking Squash back to the People

OUTDOOR SQUASH CONCEPTS

Communities value the benefits derived from outdoor play and in our increasingly urban environments, access to free recreation areas are shrinking. Outdoor squash facilities offer a compact, unique and cost-effective space for informal play, for children and adults alike. Such an environment is ripe for the development of foundation skills as well as the more complex skills required for transition to traditional forms of squash.

The foundations of squash can be played out with inexpensive equipment and a simple, open play space. A concrete floor and wall meets the most basic requirements. While high-end outdoor squash facilities are becomingly increasingly popular worldwide, there are many scalable options for councils to consider, depending on the space, existing amenities and budget.

Design Considerations:

- Identifying high traffic areas to maximise visibility and player safety
- Clear and easy exit points and well-lit spaces to enhance public surveillance
- Slip resistant playing surfaces
- Use of anti-graffiti paint/surfaces or incorporating professional graffiti art
- Incorporating squash branding/imagery for ease of recognition
- Access to basic user amenities, such as seating, toilets, water fountains, rubbish bins, BBQs, public toilets and bike racks
- Access to community facilities such as libraries and schools to manage equipment hire and reduce participation costs
- Undetectable sloping for water drainage

SCALABLE OPTIONS



Tennis facilities, such as Frew Park, Brisbane, are increasingly recognising the value of open, simple-to-access practice spaces which require minimal organisation and no partner.



The John H. Dickerson Community Centre in Daytona Beach, Florida (US), is attached to nearby indoor and outdoor basketball courts, two lit tennis courts, a fitness centre and playground.



A private facility located in Burlington, Vermont (US) was built on public land to take advantage of the summer seasons. The court was constructed to playing standards with the exception of the back wall which is approximately one metre shorter for viewing and safety purposes.



A back to-back outdoor squash concept was developed by Oneighty Sport & Leisure Solutions for Squash South Australia. Features include Perspex viewing windows, illuminative markings and inclusive amenities.



Access to cheap, squash-branded paddles increases the affordability of informal versions of squash and racquetball. Equipment hire may be facilitated within nearby community facilities such as libraries, or can be bought from shops, vending machines or online at

WWW.SQUASH.ORG.AU

REVOLUTIONS IN SQUASH

Internationally and within Australia, a new breed of high-end squash facilities are being built in parks and precincts to improve the accessibility of the game and keep up with contemporary sport participation trends. Organisations such as the New York Public Squash Foundation and Squash South Australia, in conjunction with court build companies, are at the cutting edge of Outdoor Squash development with projects underway such as the Brooklyn Public Squash Court (US) and Tonsley 24/7 (Squash Australia).

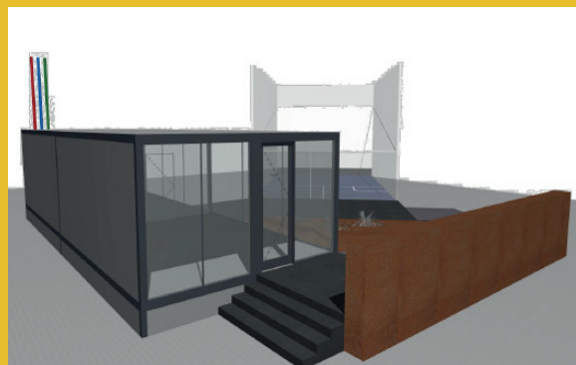
Innovations in these types of facilities now include:

- Swipe card entry for 24/7 access;
- Solar panels for the provision of lighting/audio/air conditioning;
- Audio streaming for players to create their own playlists;
- Data projectors with moving images, creating targets and reacting to activity;
- Video capability for security and player development feedback;
- Electronic shades for moderating sunlight levels; and
- Electronic scoring panels

A PROVEN CONCEPT IN THE GREAT OUTDOORS: THE GROWTH OF POP-UP SQUASH

Inflatable and 'pop up' squash courts have long been used as an opportunity to take squash facilities from within closed off facilities and centres, and place the game in the arms of the public. They are a proven and popular method of improving the visibility and profile of the game in an environment Australian's enjoy like no other.

Outdoor inflatable and pop up courts have been used alongside high profile events and in parks and public spaces with high traffic volumes to get people involved in a healthy, social and safe space, and create pathways into clubs and centres.



Tonsley 24/7 is a state-of-the-art squash facility recently completed in Adelaide's new commercial precinct. The facility offers a contemporary space for students and employees of the precinct, who can book and manage their activity online. The facility will incorporate many of the developments listed.



The Public Squash Foundation is using crowd funding to develop this court in the Hamilton Fish Recreation Centre on the Lower East Side of New York. The project is driven to make squash more accessible and visible to the public in underutilised park grounds.





WHERE TO NOW?

Squash Australia encourages you to contact us to discuss your needs and to ensure you are connected with critical squash stakeholders in your region throughout the process. We can also help in the provision of a range of squash programmes, catered to different audiences to maximise court usage.

HAMISH CAIN

Email: facilities@squash.org.au

PLAN OUTDOOR SQUASH



Scale 1:200

3D-VIEW OUTDOOR SQUASH





WWW.SQUASH.ORG.AU