

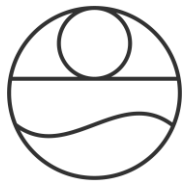


PELORUS PRIVATE ISLAND

TRADE SEASON:	1 st February 2024 – 31 st March 2025
RESERVATIONS:	Morris Escapes +61 (07) 4777 7377 reservations@morrisescapes.com.au
BANKING DETAILS:	Orpheus Island Nominees Pty Ltd National Australia Bank 330 Collins Street, Melbourne VIC 3000 BSB 083 088 Account 19 322 9871 Swift Code NATAAU3303M
SALES & MARKETING CONTACT:	marketing@morrisescapes.com.au
LINK TO HERO ASSETS:	click here

1. NORTHERN ESCAPE COLLECTION OVERVIEW

Morris Escapes is a curated portfolio of boutique sustainable lodges and experiences that celebrate Queensland's diverse natural beauty. Inspiring authentic experiences and lasting memories, discover luxury island hideaways on the Great Barrier Reef ([Orpheus Island Lodge](#) and [Pelorus Private Island](#)), invoke the spirit of adventure in the outback ([Mt Mulligan Lodge](#)), and succumb to country elegance in the Scenic Rim ([Beechmont Estate](#)). A private helicopter charter service ([Nautilus Aviation](#)) provides unrivalled transfers in Northern Australia and a fleet of outstanding superyachts ([Morris Nautical](#)) offer privately chartered Great Barrier Reef exploration.



2. LODGE DESCRIPTION

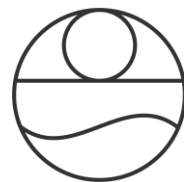
Pelorus Private Island is the latest jewel in the Morris Escapes crown, offering travellers an utterly secluded and indulgent hideaway amongst the World Heritage-listed Great Barrier Reef.

Embraced by pristine waters, superb fringing reefs, and a lush verdant hillside, Pelorus Private Island boasts a naturally isolated single, sprawling residence featuring five luxurious King suites, making it the only luxury private island residence in the region.

Accessed via helicopter from Townsville or Cairns, or by private superyacht from Port Douglas or Cairns, guests are invited to indulge in relaxation and barefoot adventure with a range of bespoke activities on offer including diving and snorkelling, guided jet ski and seabob tours, reef fishing, access to the Museum of Underwater Art (MOUA) and boat charters. The island also provides access to the untouched wilderness of Hinchinbrook Island, Australia's largest island national park, home to rainforest-clad hiking trails, cascading waterfalls, abundant wildlife and diverse flora. Yoga and spa therapists are also available at an additional cost, arranged upon request.

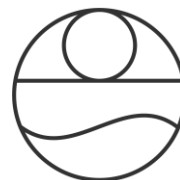
Pelorus Private Island is a vision of Australian creative talent Dubois, a design-focused studio based in Melbourne. The residence opened to international and domestic traveler's in December 2023.





3. ACCOMMODATION SPECS

SUITE ONE	SUITE TWO	SUITE THREE	SUITE FOUR	SUITE FIVE
Rate inclusive of two guests	Rate inclusive of two guests	Rate inclusive of two guests	Rate inclusive of two guests	Rate inclusive of two guests
Max Capacity two guests	Max Capacity two guests	Max Capacity two guests	Max Capacity two guests	Max Capacity three guests
<ul style="list-style-type: none"> - Bedroom - Bathroom - In-room lounge - Balcony - Ocean Views - Air-conditioning, heating and ceiling fan - Daily room service - Bathrobes and slippers - LaGaia toiletries - GHD hairdryer, GHD straightener, Babyliss hair clippers - Yoga mats - Complimentary water bottles - Can interconnect with Suite 5 	<ul style="list-style-type: none"> - Bedroom - Bathroom - In-room lounge - Balcony - Ocean Views - Air-conditioning, heating and ceiling fan - Daily room service - Bathrobes and slippers - LaGaia toiletries - GHD hairdryer, GHD straightener, Babyliss hair clippers - Yoga mats - Complimentary water bottles 	<ul style="list-style-type: none"> - Bedroom - Bathroom - In-room lounge - Balcony - Ocean Views - Air-conditioning, heating and ceiling fan - Daily room service - Bathrobes and slippers - LaGaia toiletries - GHD hairdryer, GHD straightener, Babyliss hair clippers - Yoga mats - Complimentary water bottles 	<ul style="list-style-type: none"> - Bedroom - Bathroom - In-room lounge - Balcony - Ocean Views - Air-conditioning, heating and ceiling fan - Daily room service - Bathrobes and slippers - LaGaia toiletries - GHD hairdryer, GHD straightener, Babyliss hair clippers - Yoga mats - Complimentary water bottles 	<ul style="list-style-type: none"> - Bedroom - Bathroom - Balcony - Ocean Views - Air-conditioning, heating and ceiling fan - Daily room service - Bathrobes and slippers - LaGaia toiletries - GHD hairdryer, GHD straightener, Babyliss hair clippers - Yoga mats - Complimentary water bottles - Can interconnect with Suite 1
BEDDING CONFIGURATION	BEDDING CONFIGURATION	BEDDING CONFIGURATION	BEDDING CONFIGURATION	BEDDING CONFIGURATION
King Bed	King Bed	King Bed	King Bed	1 x King Bed or, 1 King Bed & 1 Single Bed or, 2 x King Single Beds or, 3 x King Single Beds
ROOM SIZE	ROOM SIZE	ROOM SIZE	ROOM SIZE	ROOM SIZE
INTERNAL FLOOR AREA 53m ² EXTERNAL BALCONY 22m ²	INTERNAL FLOOR AREA 51m ² EXTERNAL BALCONY 24m ²	INTERNAL FLOOR AREA 52m ² EXTERNAL BALCONY 25m ²	INTERNAL FLOOR AREA 51m ² EXTERNAL BALCONY 24m ²	INTERNAL FLOOR AREA 42m ² EXTERNAL BALCONY 17m ²
TOTAL AREA 75m²	TOTAL AREA 75m²	TOTAL AREA 77m²	TOTAL AREA 75m²	TOTAL AREA 59m²



4. NIGHTLY ACCOMMODATION RATES

- Rates are calculated based on the number of suites booked, per night
- Prices are quoted in Australian Dollars (AUD) and inclusive of 10% GST
- Two-night minimum stay applies with a three-night minimum over festive season
- Booking code **NIGHTLY**

# OF NIGHTS	1 x SUITE PER NIGHT	2 x SUITES PER NIGHT	3 x SUITES PER NIGHT	4 x SUITES PER NIGHT	5 x SUITES PER NIGHT
2 nights	\$18,500	\$20,500	\$22,500	\$24,500	\$26,500
3 nights	\$18,000	\$20,000	\$22,000	\$24,000	\$26,000
4 nights	\$17,750	\$19,750	\$21,750	\$23,750	\$25,750
5 nights	\$17,600	\$19,600	\$21,600	\$23,600	\$25,600
6 nights	\$17,500	\$19,500	\$21,500	\$23,500	\$25,500
7+ nights	\$17,430	\$19,430	\$21,430	\$23,430	\$25,430

Rate inclusions:

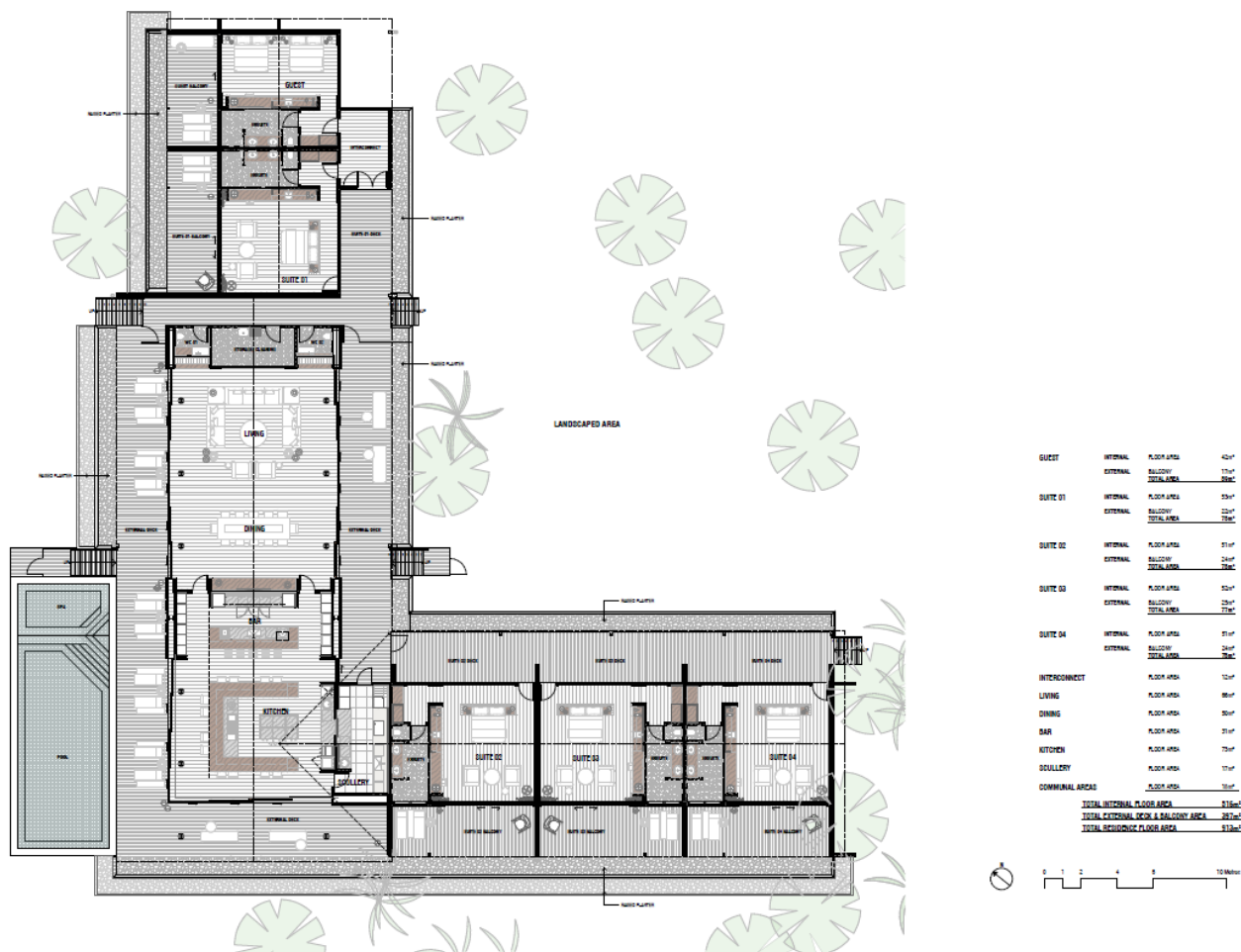
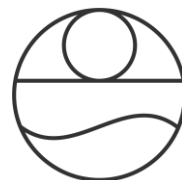
- All gourmet meals, with menus curated to guests' preferences
- A selection of premium wines, beers, spirits and soft drinks
- Veuve Clicquot Yellow Label champagne
- In-residence gourmet snacks
- Experiences such as local fringing reef snorkelling, guided jet ski island tours, reef fishing, a Hinchinbrook Island adventure (subject to weather and tides), an outer reef excursion, Orpheus Island Research Station Tour (subject to weather, availability and tides) and unlimited surrounding islands boat charters
- Use of water equipment such as kayaks, seabobs, stand-up paddle board, snorkelling and fishing equipment, and Schiller water bikes

Extra person rates:

Full-size cot provided free-of-charge for infants (aged 0 - 2).

Or;

- Add one king single bed for a child (aged 3 - 17) to Suite Five only at \$300
- Add one king single bed for an adult (aged 18+) to Suite Five only at \$550



5. HELICOPTER TRANSFERS EX TOWNSVILLE

Access to Pelorus Private Island is via a 30 min helicopter journey from Townsville or a 90 min journey from Cairns over the picturesque coral-studded sea.

PRIVATE HELICOPTER CHARTER EX TOWNSVILLE

All helicopter transfers are non-commissionable

- EC130 pricing \$2,800 each way (up to 6 pax – maximum payload 540kgs)
- R44 pricing \$1,270 each way (2 pax – maximum payload 240kgs max)

PRIVATE HELICOPTER CHARTER EX CAIRNS

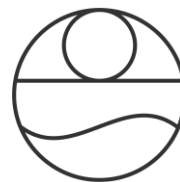
All helicopter transfers are non-commissionable

- EC130 pricing \$5,940 each way (up to 6 pax – maximum payload applies)
- R44 pricing \$3,050 each way (2 pax – maximum payload applies)

PRIVATE HELICOPTER CHARTER FROM OTHER DESTINATIONS (POA)

All helicopter transfers are non-commissionable

Helicopter charters can be arranged from other destinations, price upon request.



- Cairns
- Port Douglas – Sheraton Mirage
- The Ville Resort – Casino or Ardo
- Mt Mulligan Lodge
- Silky Oaks Lodge
- Hamilton Island / Whitsundays
- Bedarra Island
- Magnetic Island
- Lizard Island

There will be no charge for infants under three years of age when seated on the lap of an adult passenger. Children aged 3+ years will be charged at the 'per person' rate as for safety reasons they require their own seat.

6. HELICOPTER BOOKING PROCESS

All helicopter payments are made through Morris Escapes on behalf of Morris Aviation (Nautilus Aviation). Prior to booking any domestic flights to/from Townsville or Cairns, please contact Morris Escapes Reservations on +61 (0)7 4777 7377 or email reservations@morrisescapes.com.au to:

1. Secure Pelorus Private Island accommodation
2. Provide body weights of all guests travelling to Pelorus Private Island by completing [this form](#)
3. Helicopter transfers will only be confirmed by Morris Aviation (Nautilus Aviation) once accurate individual guest weights (kg) are provided. If guest weights are not supplied at the time of booking, an upgrade cost for a private charter may apply
4. Pelorus Private Island recommends that domestic flights are booked AFTER accommodation and helicopter transfers are confirmed

**further Morris Aviation (Nautilus Aviation) helicopter Terms & Conditions are noted below.*

7. TOWNSVILLE HELICOPTER CHECK-IN

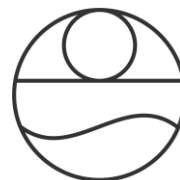
Check-in time is 45 minutes prior to helicopter departure. A Nautilus Aviation pilot will meet guests within the arrival's hall, near the baggage carousels. Guest body and bag weights will be measured at the time of check-in to document accurate helicopter payloads prior to the flight as a regulation of standard aviation safety policy. The guests will then be transferred to the Nautilus Aviation hangar where their helicopter journey will depart from.

For any guests arriving at Townsville Airport by car, we suggest that they park in the long-term Airport car park and then enter the terminal.

8. CAIRNS HELICOPTER CHECK-IN

Arriving by domestic flight ex Cairns – for any guests arriving at Cairns Airport on a domestic flight and taking a private helicopter charter to Pelorus Island, they will be greeted 45 minutes prior to their helicopter departure time within the Cairns Airport Arrivals Hall T2 (Domestic Terminal) near to Baggage Carousel #3 and the First Aid Room. They are to look out for a Nautilus Aviation Ground Crew member who will be holding a whiteboard. They will then be transferred to the Nautilus Aviation Cairns hangar located in General Aviation. Please note that we require their flight details in advance to arrange terminal transfers, as well as their personal mobile numbers.

Arriving by international flight ex Cairns – for any guests arriving into Cairns Airport on an international flight and taking a private helicopter charter to Pelorus Island, they will



be greeted 45 minutes prior to their helicopter departure time outside the Cairns Airport T1 (International Terminal), in the public pick-up zone. They are to look out for a Nautilus Aviation Ground Crew member who will be driving a silver Hyundai iMax van. They will then be transferred to the Nautilus Aviation Cairns hangar located in General Aviation. Please note that we require their flight details in advance to arrange terminal transfers, as well as their personal mobile numbers.

For any guests making their own way to the Nautilus Aviation Cairns hangar, the address is: Hangar 9 Bush Pilots Ave, General Aviation Aeroglen QLD 4870. Guests are to meet at the hangar no later than 45 minutes prior to their helicopter departure time.

We can also arrange Cairns CBD hotel and East Air pick-ups with advanced notice.

Guests' individual body and bag weights will be measured at the time of check-in to document accurate helicopter payloads prior to the flight as a regulation of standard aviation safety policy.

If your client experiences any domestic or international flight delays or cancellations on the day of their helicopter flight, please contact Morris Aviation (Nautilus Aviation) on +61 (0)7 4034 9000.

9. LUGGAGE RESTRICTIONS

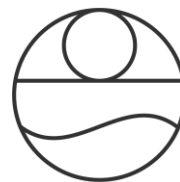
Passengers are restricted to one small bag, to a maximum of 15kg in total (1 x carry on size case or soft / non-rigid duffle bag is required as they are easier to load in the helicopter boot due to space limitations). Any excess luggage can be safely stored at the Nautilus Aviation hangar. Be aware that in some instances the pilot may ask your guests to re-pack into a supplied duffle bag if their luggage is too large or rigid!

10. PERSONALISE YOUR STAY FORM

A 'Personalise Your Stay' form must be completed for all guest bookings to enable us to deliver a memorable stay – <https://pelorusprivateisland.au/personalise-your-stay/>

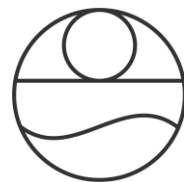
11. TERMS OF TRADE

AGENTS WITHOUT CREDIT	A 25% deposit of the total booking (accommodation and transfers) is required at the time of booking and full payment must be made at least 60 days prior to guest arrival.
LATE BOOKINGS	Where bookings are less than 30 days prior to arrival and credit facilities have not been established, full payment is required immediately in AUD and a copy of the bank transfer remittance to guarantee the booking sent to Morris Escapes Reservations. Payment may also be made by credit card; additional surcharge applies for Mastercard/VISA 1.5% and AMEX 2.6%
AGENTS WITH CREDIT	A 25% deposit of the total booking (accommodation and transfers) is required 30 days prior to arrival, and full payment must be made at least 3 days prior to guest arrival.
CANCELLATION POLICY:	<ul style="list-style-type: none">- Any cancellations made 91 days or more prior to arrival; no cancellation fees apply.- Any cancellations made 90 – 61 days prior to arrival; a 25% cancellation fee applies (accommodation and transfers).- Any cancellations made 60 – 0 days prior to arrival; 100% cancellation fee applies (accommodation and transfers).- No refund can be given for any unused services or early departures.



- All cancellations must be received in writing (cancellation fees will be set & applied from date of written cancellation receipt).
- All Visa / MasterCard / AMEX transaction fees are non-refundable in the event of cancellation.

BANKING	Orpheus Island Nominees Pty Ltd National Australia Bank 330 Collins Street, Melbourne VIC 3000 BSB 083 088 Account 19 322 9871 Swift Code NATAAU3303M Reference: <confirmation number> <guest surname>
RELEASE OF BOOKINGS	If any of the aforementioned conditions are not met, Pelorus Private Island reserves the right to release all bookings.
MINIMUM STAYS	Minimum two (2) night stay applies to all reservations except for over festive season dates (18th December 2024 – 5th January 2025), where the minimum stay is three (3) nights.
NO SHOW POLICY	Full cancellation fees apply and will be billed to the agent.
GST	All rates are subject to increase in the case of Government levies, taxation or in line with external operator charges. All rates are inclusive of Goods and Services Tax (GST).
CHECK-IN/CHECK OUT	Check-in time is from 2pm. Check-out time is 11am.
CHILD POLICY	Pelorus Private Island welcomes children. Infants are classified as <2 years of age. Cots are provided, free-of-charge. Children are classified as 3 - 17 years of age. Special children's menus are available on request.
CHILD DISCLAIMER	When confirming a stay at Pelorus Private Island, parents accept all responsibilities for their child(ren).
HELICOPTER TRANSFERS	Helicopter transfers to/from Morris Escapes lodges are operated by a third-party Morris Aviation (Nautilus Aviation). At the time of booking, it's mandatory for agents to supply their clients' individual body weights (kg) to accurately quote and confirm helicopter transfers. On the day of transfer, passengers are restricted to a maximum of 15kg of luggage each (this includes hand luggage). Any excess luggage can be stored at the respective Morris Aviation (Nautilus Aviation) hangars. Each helicopter type is limited to certain payload restrictions. Should a passenger's individual body weight have a variance of more than 10% from their initially quoted weight, Morris Aviation (Nautilus Aviation) reserves the right to charge an additional upgrade fee. https://www.nautilusaviation.com.au/terms-and-conditions/
WEATHER POLICY	Pelorus Private Island will not accept any responsibility for adverse weather conditions. If guests accessing Pelorus Island experience inclement weather and their chosen transfer arrangement cannot be fulfilled, Morris Escapes Reservations will provide alternative solutions (subject to availability and weather conditions). In some extreme circumstances, an overnight stay in Townsville may be required.
TRAVEL INSURANCE	Although all care is taken, Pelorus Private Island cannot accept responsibility for any expenses incurred by a passenger as a result of any domestic/international flight delays, rescheduled or alterations, mechanical failures or poor weather. It is



suggested that guests take out travel insurance to cover any unforeseen circumstances.

SPECIAL DIETARIES

As Pelorus Private Island is a remote island destination, it's essential to advise any special dietary needs at the time of reservation. We will do our best to tailor menus accordingly whilst providing an opportunity to sample the delights of the region.

PHONE NETWORK

Pelorus Private Island offers WIFI in the residence and is best covered by the Telstra & Optus mobile networks. Other networks provide limited coverage.

SUSTAINABILITY

At Morris Escapes, sustainability lies at the core of who we are as a business. We are passionate about reducing our impact on the environment and making a positive one on the community. Our focus is on People, Place, and Planet, all three are interwoven; they operate together and cannot be siloed. [Click here](#) to view our sustainability philosophy.

REEF KEEPERS

Morris Escapes donates \$100 per guest stay to the [Reef Keepers Fund](#). Guests can indulge with a clear conscience knowing that donations go towards environmental projects aimed at protecting and preserving the Great Barrier Reef.