

All Industry Types

RFE000000002997

Corrugated Product Structures

Product Structure Maintenance(CORRI28Q) - [QBE]

File Edit Options Print Help

Add Delete Clear Save Search Spec Mnt Item Mnt Cost Est Prev Next Copy Plan Notes Exit

Routing Shipping Instructions RFQ's

Descr:

Extended Descr:

Customer:

Item No: Prod Cd:

No. Per Unit: Commodity:

Assm Cost/M: Plant:

No. Of Straps: Pallet Type:

Search All Plants RFQ Set Inactive

Use Component Costing Qty for Sets Include Inactive Items in Search

Bill Components Separately Limit spec dropdowns to selected customer

Foam L: Foam W: Foam H:

Master Item

Ship

Parts Assembled

Stocked House Item

Use Master SqFt Freight

Override Master Weight

Master Weight:

Price Lookup Type

Quote History

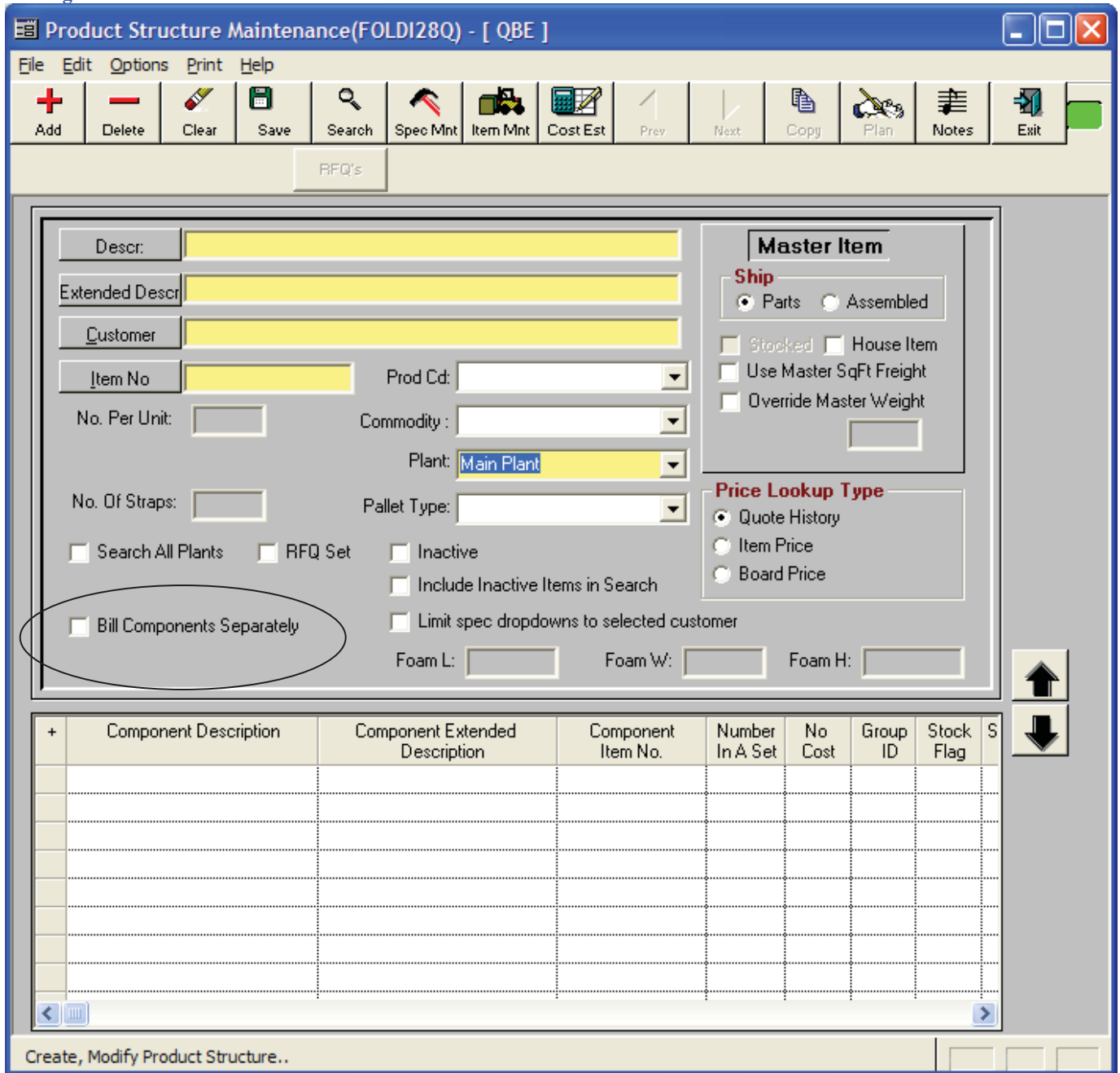
Item Price

Board Price

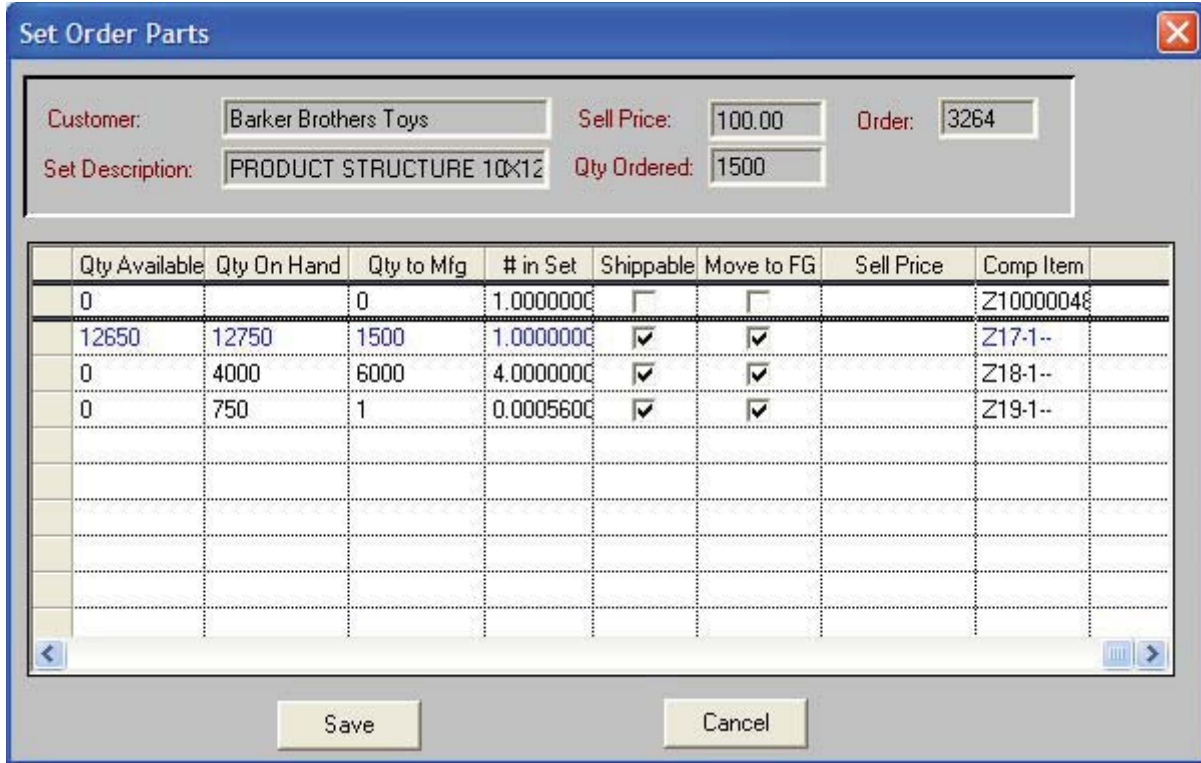
+	Component Description	Component Extended Description	Component Item No.	Number In A Set	No Cost	Group ID	Stock Flag	S

Create, Modify Product Structure..

Folding Product Structures



A checkbox, Bill Components Separately, was added to the Product Structure Maintenance screen. ~~This checkbox cannot be checked when the product structure is shipped 'Assembled' (this will cause an error on Save). It also cannot be checked if the components are for multiple customers.~~ When an order is placed for a product structure that has this checked, the Order Processing program will proceed to create separate orders for the components of this product structure. Sub-assemblies will get a single order.



If an order is placed for a product structure that does not have Bill Components Separately checked, it will place one order under the Product Structure like current logic.

When an order is placed for a product structure, that has Bill Components Separately checked, the user will enter the Product Structure. Imaginera will bring up the ‘Set Order Parts’ window after the due date is entered to allow user to override quantity, price, and due date for each component as needed. Initial values will be defaulted as follows:

- Quantity:* set line quantity times number in set
- Price:* retrieved from Quote History or Price List like a normal order
- Due Date:* same as entered on set line

When the Set Order Parts window is brought up, Imaginera will automatically create an order for each component. No order will be entered for the master itself (part 0). The user will be able to override any field (e.g. price, quantity, due date) on the component’s order. All of the components orders will be assigned the same project number. Each order will be independently produced, shipped, and invoiced.

Note: The Order# column is only visible if Imaginera is set for *Manual Order Numbering*. Upon leaving this window, all the orders will be saved to Orders table with one project number to associate with. All the orders will be brought back to Order Process window in the color of Magenta to indicate these orders are exploded from a Product Structure. On the Order Process window these orders can also be modified.

For printing factory tickets, if a component order is highlighted, it will only print the factory ticket for this order (this component)

Project Number will be available to all the 9999 factory tickets (ftc9999.qrp, ftcs9999.qrp, fts9999.qrp, ftss9999.qrp). Currently the item description of the first 20 components is passed to the Factory Ticket QRP. For exploded sets, these 20 values will now contain the order number first, then the item description.

Customer Maintenance – Billing

Added a new radio button group to the Customer Billing screen that qualifies the One Per BOL option as referring to either Order Number or Project Number. This option will only be enabled if (O)ne Per BOL is selected. The default will be Order Number which is what the current logic assumes. Because project number normally defaults to order number, choosing the Project Number option will have the effect of one Order per BOL except for exploded sets, which will be grouped onto the same BOL.

Shipping History

The screenshot shows the 'Shipping History' application window. The title bar reads 'Shipping History'. The menu bar includes 'File', 'Sort', 'Reports', 'EDI', and 'Help'. The toolbar contains icons for 'Clear', 'Print', 'Search', 'Query - File', and 'Exit'. The main area is divided into several sections:

- Order Information:** Order No., D.R. #, From Date, To Date, Customer, Item Ident., Warehouse.
- Status Filters:** Posted Status (Posted Only, Unposted Only, All), Print Status (Printed Only, Unprinted Only, All).
- Ship Variance:** Variance Only checkbox, Pct Outside Ovr/Undr Qty.
- Search Filters:** Cust P/O No., Cust Rel No., Project No. (circled), Show True MSF, Exclude Warehouse Transfers.
- Search By:** Truck, Truck Type, Carrier Code.

Below the filters is a data table with the following columns: Unit Price, Extended Price, Pricing Method, Loader, Cust Phone, Ship To Phone, and Project No. (circled). The table is currently empty.

Project # added as a QBE filter and a column in shipping history.

Load Trucks from FG/Plan

The screenshot shows the 'Delivery' software interface. The top menu bar includes 'Print', 'Options', 'Log Trucks!', 'Capacity Measure', 'Help', and 'Exit!'. The main window is divided into several sections:

- Finished Orders | Planned Order:** Contains search and filter fields for Order, Customer, Due Date, From Whs, Truck Type, To Whs, and Project. The 'Project' field is circled in red.
- Truck Information:** Fields for Truck, From Whs, Trailer, Ship Date, and Trip#. Includes a 'Closed' checkbox and buttons for 'Print Now!', 'New Trip', 'Change...', and 'Trips...'.
- Summary:** A bar with a calendar icon, a blue bar at 30%, and a red bar at 30%.
- Table 1 (Left):** Columns: Cust Release, Bill/Hold Type, From Whs, To Whs, Project #. The 'Project #' column is circled in red.
- Table 2 (Right):** Columns: Bill/Hold Type, CODFlg, Pallet Charges, Project #. The 'Project #' column is circled in red.
- Ready To Load:** Includes 'Warehouse' (All, Ord, Trk) and summary statistics for Order, Tot. Units, Sel. Units, Order Qty., Tot. Qty., Sel. Qty. Below is a table with columns: Ticket, Qty, Bin, Whs, Date, Qty/Case, Case.
- Loaded On Truck:** Includes a 'Show Ready To Load' button and a table with columns: Unit Qty, Ticket, Orig Bin, From-Whs, To-Whs, Cas.

Added Project number to Truck Look up Screen (left) as a QBE option and a new column and to Truck side (right) as a new column in the Load Trucks from Finish Goods.

Invoice Entry

Disc %	Warehouse	Pallet Type Num	Freight Terms	Freight Terms	Bill/Hold Type	Project #

Added Project number to Invoice Maintenance screen and Invoice (infr9999.qrp). Invoice will be done at the component level for exploded Product Structure unless they are on one Delivery Receipt.

Invoice for exploded Product Structure will have Project number passed to it, but description will print as before.