

Email Configuration Guide

Blackberry running OS version 6

April 5, 2011

Table of Contents

Introduction	3
Configuration of your device	3
Beginning the Account Setup	3
Entering the Email Account Details	6

Introduction

This guide explains how to configure your Blackberry to access your email account.

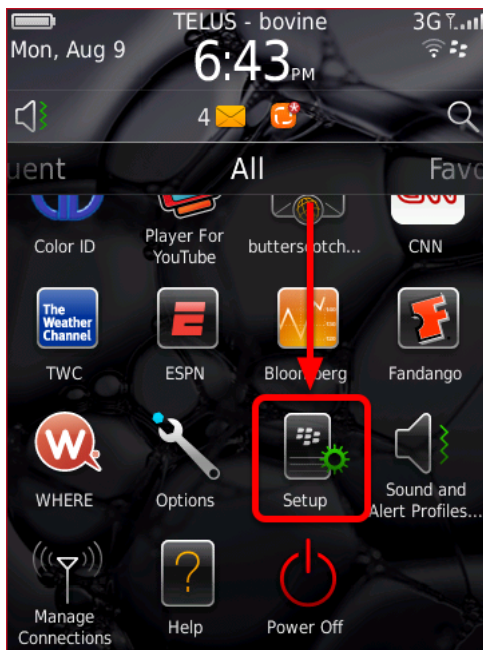
This tutorial was created using a Blackberry 9780 smartphone 3G running OS version 6.0. If you are using different hardware or a different OS version, these instructions may differ.

The domain example.com is used throughout this guide as a substitute for your domain name. If your domain is johnsmith.com, use johnsmith.com in place of example.com.

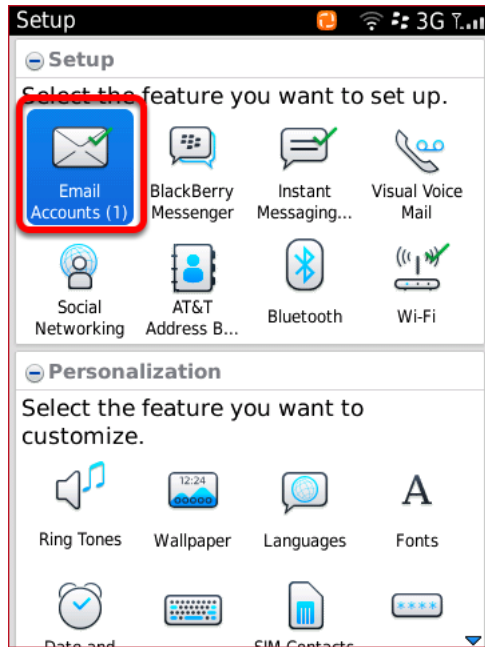
Configuration of your device

The steps below can be used to set up hover email on your Blackberry.

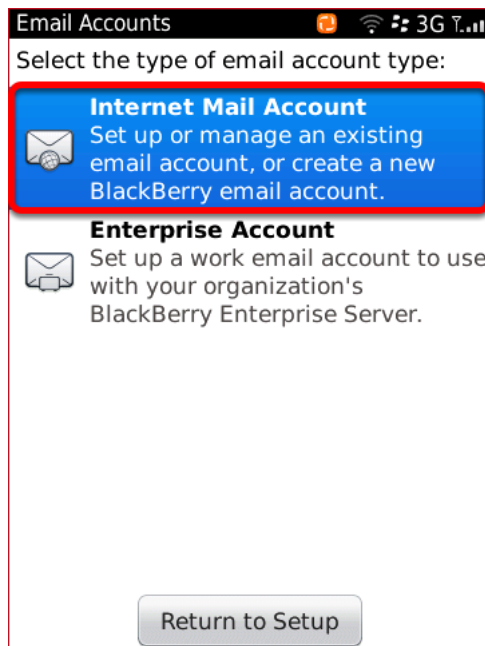
Beginning the Account Setup



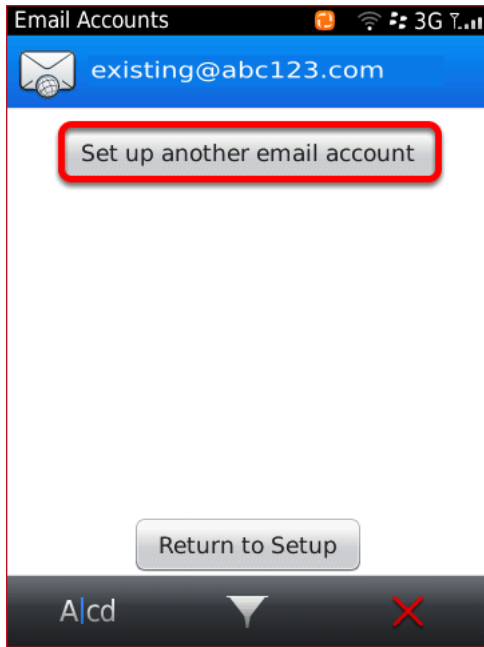
From your home screen, scroll down and tap **Setup**.



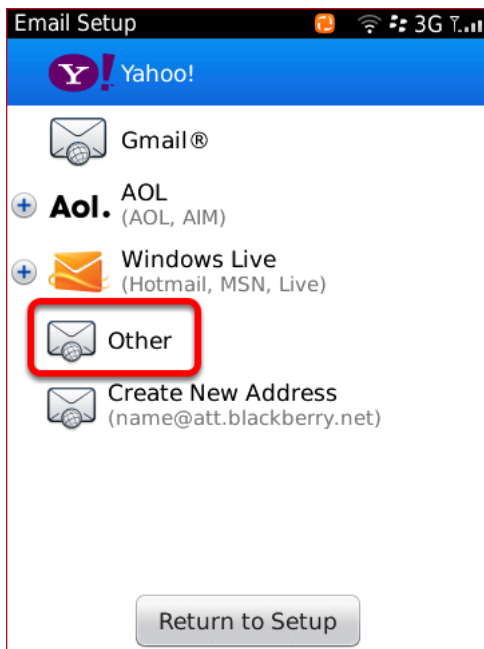
Tap **Email Accounts**.



Tap **Internet Mail Account**.

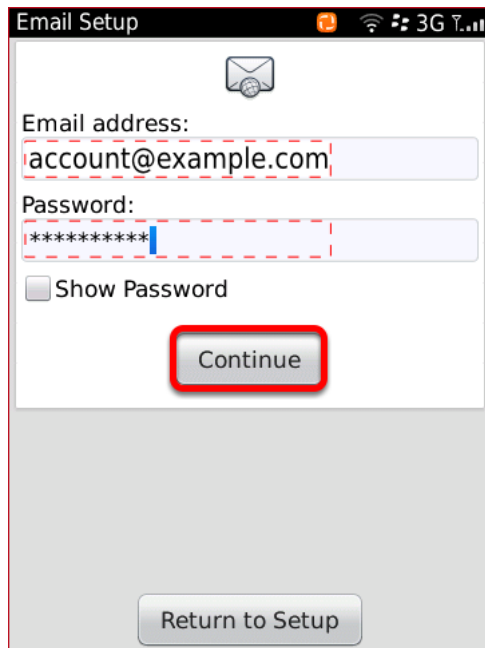


If you are shown this screen, tap **Set up another email account**. You will not see this screen if you do not have existing email accounts configured on your Blackberry.



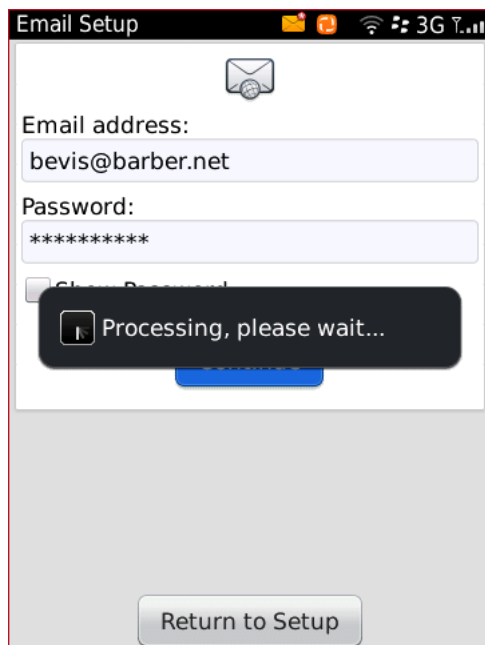
Tap **Other**.

Entering the Email Account Details



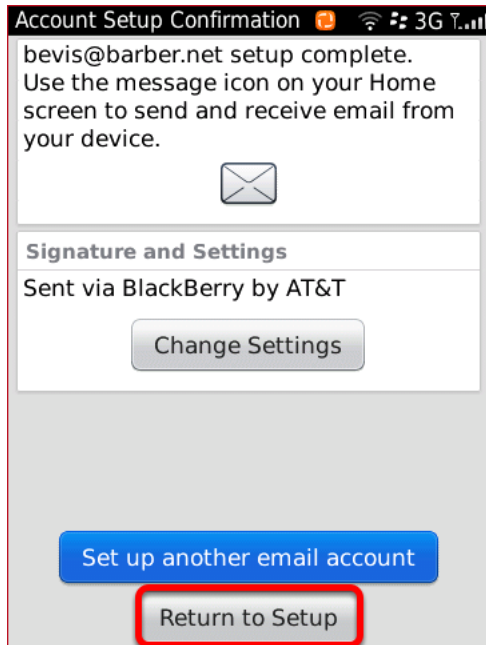
The screenshot shows the 'Email Setup' screen on a Blackberry device. At the top, there is a status bar with icons for battery, signal strength, and 3G connectivity. Below the status bar is a header with an envelope icon. The main content area contains two text input fields: 'Email address:' with the text 'account@example.com' and 'Password:' with the text '*****'. Below the password field is a checkbox labeled 'Show Password' which is currently unchecked. A red dashed box highlights both the email address and password fields. A red rounded rectangle highlights the 'Continue' button. At the bottom of the screen is a 'Return to Setup' button.

Enter your email address and password, then tap **Continue**.



The screenshot shows the 'Email Setup' screen on a Blackberry device. The 'Email address:' field now contains 'bevis@barber.net' and the 'Password:' field contains '*****'. A black dialog box with a white border is centered on the screen, displaying the text 'Processing, please wait...' and a small square icon with a white 'P'. The 'Continue' button is now a blue bar at the bottom of the dialog box. The 'Return to Setup' button is visible at the bottom of the screen.

A processing message will be displayed on your screen.



Tap **Change Settings**.

Click on **Return to Setup** to complete the setup process.