

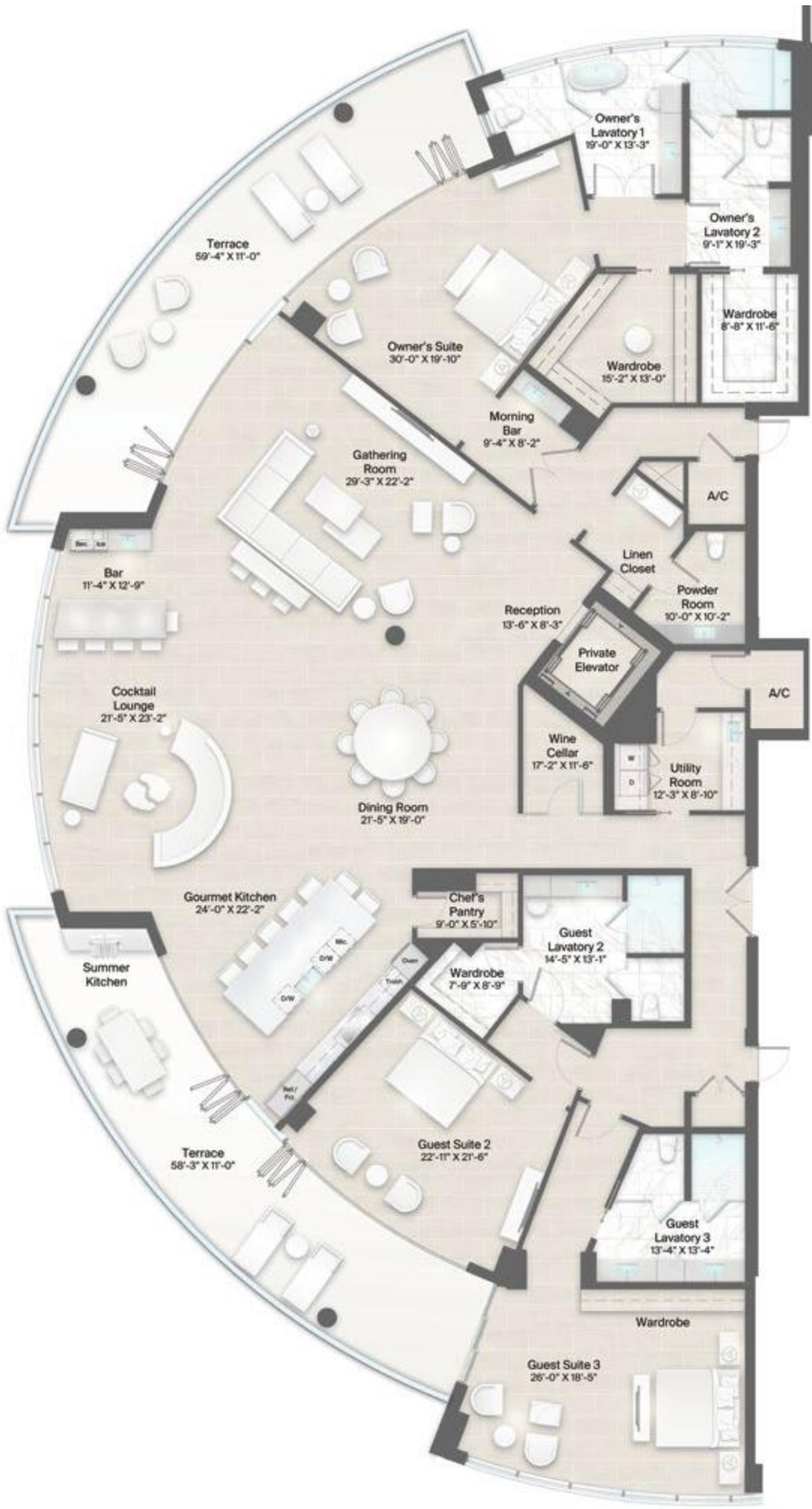
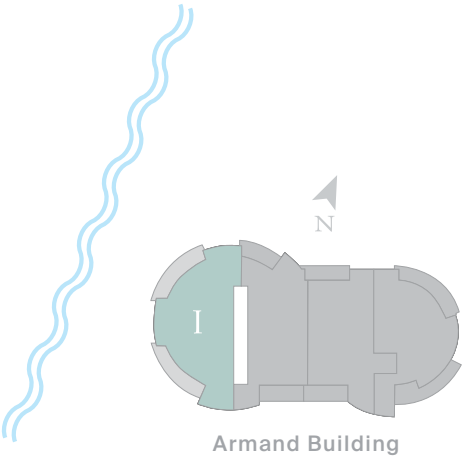


## The Armand Building

Armand Building, Plan I 3 Bedrooms, 4.5 Baths

Residence	AC Living Area	Terrace	Private Garage	Total
50I	5,895 sq. ft.	1,634 sq. ft.	2-Car	7,529 sq. ft.
40I	5,895 sq. ft.	1,437 sq. ft.	2-Car	7,332 sq. ft.
30I	5,895 sq. ft.	1,247 sq. ft.	2-Car	7,142 sq. ft.
20I	5,895 sq. ft.	5,261 sq. ft.	2-Car	11,156 sq. ft.

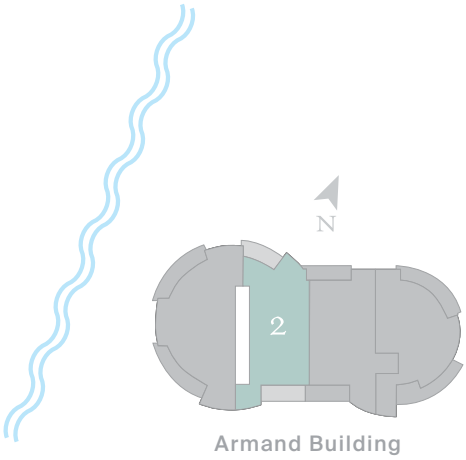
Terrace square footage varies by Residence



Armand Building, Plan 2 3 Bedrooms, 3.5 Baths Plus Clubroom

Residence	AC Living Area	Terrace	Private Garage	Total
502	4,992 sq. ft.	947 sq. ft.	2-Car	5,939 sq. ft.
402	4,992 sq. ft.	890 sq. ft.	2-Car	5,882 sq. ft.
302	4,992 sq. ft.	835 sq. ft.	2-Car	5,827 sq. ft.
202	4,992 sq. ft.	2,256 sq. ft.	2-Car	7,248 sq. ft.

Terrace square footage varies by Residence



Stated "AC Living Area" is measured to the exterior boundaries of the exterior walls and the centerline of interior demising walls and in fact varies from the square footage and dimensions that would be determined by using the description and definition of the "Unit" set forth in the Declaration (which generally only includes the interior airspace between the perimeter walls and excludes all interior structural components and other common elements). This method is generally used in sales materials and is provided to allow a prospective buyer to compare the Units with units in other condominium projects that utilize the same method. The AC Living Area of each Unit type, calculated in accordance with the definition set forth in the Condominium Declaration, would be: 5,591 sq. ft. as to Armand Building, Plan 1, 4,755 sq. ft. as to Armand Building, Plan 2, 3,954 sq. ft. as to Armand Building, Plan 3, 4,681 sq. ft. as to Armand Building, Plan 4, 3,734 sq. ft. as to Bateau Building, Plan 5, 2,225 sq. ft. as to Bateau Building, Plan 6, 1,631 sq. ft. as to Bateau Building, Plan 7, 3,734 sq. ft. as to Bateau Building, Plan 8, 4,961 sq. ft. as to Champagne Building, Plan 9, 2,932 sq. ft. as to Champagne Building, Plan 10, 3,113 sq. ft. as to Champagne Building, Plan 11, 2,116 sq. ft. as to Champagne Building, Plan 12, 2,116 sq. ft. as to Champagne Building, Plan 13, 2,125 sq. ft. as to Champagne Building, Plan 14, 1,461 sq. ft. as to Champagne Building, Plan 15, 1,461 sq. ft. as to Champagne Building, Plan 16, 2,957 sq. ft. as to Champagne Building, Plan 17, and 4,962 sq. ft. as to Champagne Building, Plan 18. All dimensions are estimates which will vary with actual construction, and all floor plans, specifications and other development plans are subject to change and will not necessarily accurately reflect the final plans and specifications for the development. All depictions of furniture, appliances, counters, soffits, floor coverings and other matters of detail, including, without limitation, items of finish and decoration, are conceptual only and are not necessarily included in each Unit. Said items are only included if and to the extent provided in your purchase agreement. Please note that the Total area listed above includes the proposed square footage of terraces and a private garage. Note that those components are not part of the Unit, but rather are appurtenances as to which purchasers may be assigned exclusive use. The terrace dimensions vary and the area stated relates to the largest terrace. The actual terrace may be smaller. See the declaration for the specific dimensions of any terrace appurtenant to a particular unit. Dimensions of parking garages vary and may not be as stated, and private garages are include with a purchase to the extent expressly provided in the purchase agreement.

Stated "AC Living Area" is measured to the exterior boundaries of the exterior walls and the centerline of interior demising walls and in fact varies from the square footage and dimensions that would be determined by using the description and definition of the "Unit" set forth in the Declaration (which generally only includes the interior airspace between the perimeter walls and excludes all interior structural components and other common elements). This method is generally used in sales materials and is provided to allow a prospective buyer to compare the Units with units in other condominium projects that utilize the same method. The AC Living Area of each Unit type, calculated in accordance with the definition set forth in the Condominium Declaration, would be: 5,591 sq. ft. as to Armand Building, Plan 1, 4,755 sq. ft. as to Armand Building, Plan 2, 3,954 sq. ft. as to Armand Building, Plan 3, 4,681 sq. ft. as to Armand Building, Plan 4, 3,734 sq. ft. as to Bateau Building, Plan 5, 2,225 sq. ft. as to Bateau Building, Plan 6, 1,631 sq. ft. as to Bateau Building, Plan 7, 3,734 sq. ft. as to Bateau Building, Plan 8, 4,961 sq. ft. as to Champagne Building, Plan 9, 2,932 sq. ft. as to Champagne Building, Plan 10, 3,113 sq. ft. as to Champagne Building, Plan 11, 2,116 sq. ft. as to Champagne Building, Plan 12, 2,116 sq. ft. as to Champagne Building, Plan 13, 2,125 sq. ft. as to Champagne Building, Plan 14, 1,461 sq. ft. as to Champagne Building, Plan 15, 1,461 sq. ft. as to Champagne Building, Plan 16, 2,957 sq. ft. as to Champagne Building, Plan 17, and 4,962 sq. ft. as to Champagne Building, Plan 18. All dimensions are estimates which will vary with actual construction, and all floor plans, specifications and other development plans are subject to change and will not necessarily accurately reflect the final plans and specifications for the development. All depictions of furniture, appliances, counters, soffits, floor coverings and other matters of detail, including, without limitation, items of finish and decoration, are conceptual only and are not necessarily included in each Unit. Said items are only included if and to the extent provided in your purchase agreement. Please note that the Total area listed above includes the proposed square footage of terraces and a private garage. Note that those components are not part of the Unit, but rather are appurtenances as to which purchasers may be assigned exclusive use. The terrace dimensions vary and the area stated relates to the largest terrace. The actual terrace may be smaller. See the declaration for the specific dimensions of any terrace appurtenant to a particular unit. Dimensions of parking garages vary and may not be as stated, and private garages are include with a purchase to the extent expressly provided in the purchase agreement.

Armand Building, Plan 3 3 Bedrooms, 3.5 Baths Plus Clubroom

Residence	AC Living Area	Terrace	Private Garage	Total
503	4,187 sq. ft.	1,029 sq. ft.	2-Car	5,216 sq. ft.
403	4,187 sq. ft.	962 sq. ft.	2-Car	5,149 sq. ft.
303	4,187 sq. ft.	893 sq. ft.	2-Car	5,080 sq. ft.
203	4,187 sq. ft.	2,595 sq. ft.	2-Car	6,782 sq. ft.

Terrace square footage varies by Residence

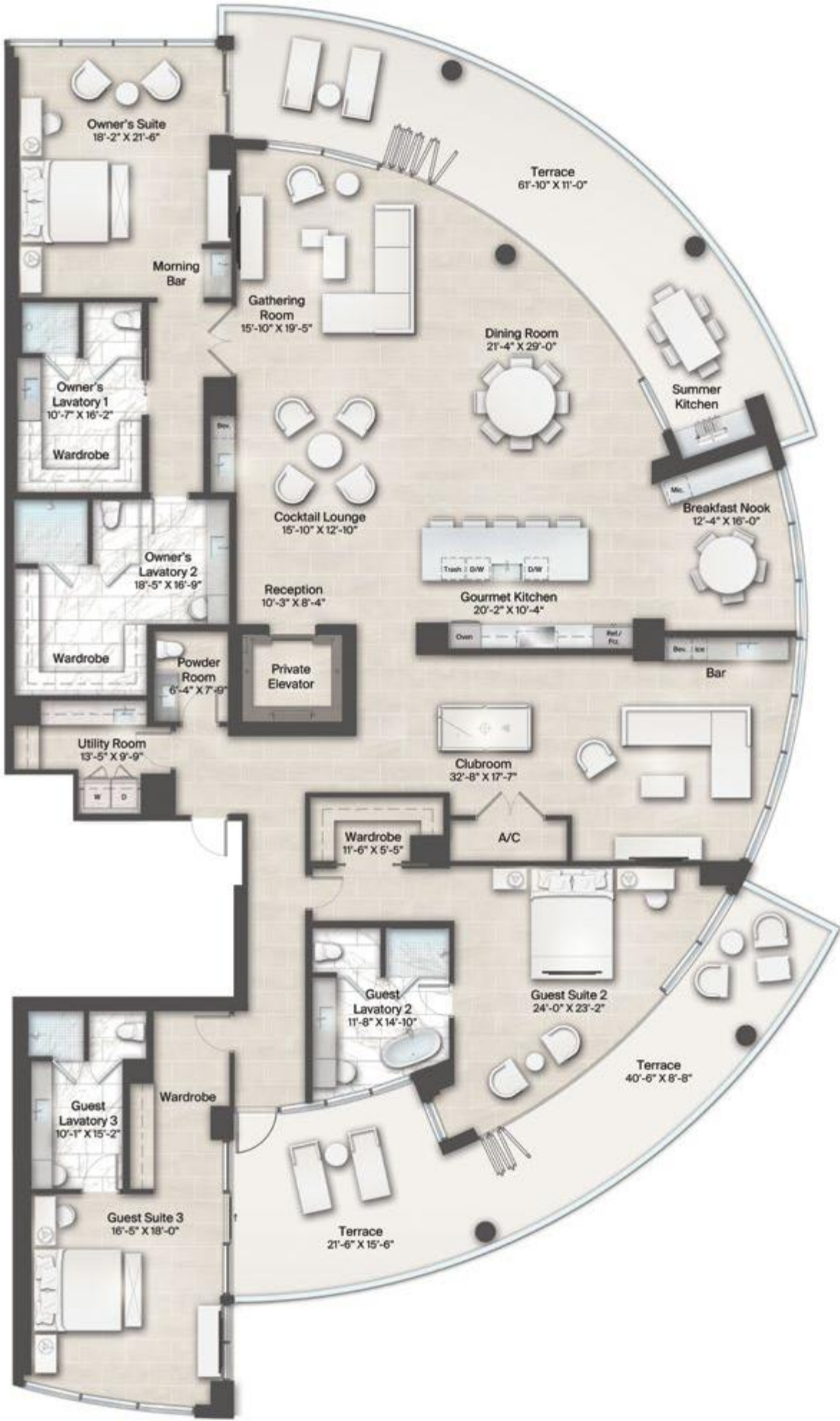


Stated "AC Living Area" is measured to the exterior boundaries of the exterior walls and the centerline of interior demising walls and in fact varies from the square footage and dimensions that would be determined by using the description and definition of the "Unit" set forth in the Declaration (which generally only includes the interior airspace between the perimeter walls and excludes all interior structural components and other common elements). This method is generally used in sales materials and is provided to allow a prospective buyer to compare the Units with units in other condominium projects that utilize the same method. The AC Living Area of each Unit type, calculated in accordance with the definition set forth in the Condominium Declaration, would be: 5,591 sq. ft. as to Armand Building, Plan 1, 4,755 sq. ft. as to Armand Building, Plan 2, 3,954 sq. ft. as to Armand Building, Plan 3, 4,681 sq. ft. as to Armand Building, Plan 4, 3,734 sq. ft. as to Bateau Building, Plan 5, 2,226 sq. ft. as to Bateau Building, Plan 6, 1,631 sq. ft. as to Bateau Building, Plan 7, 3,734 sq. ft. as to Bateau Building, Plan 8, 4,961 sq. ft. as to Champagne Building, Plan 9, 2,932 sq. ft. as to Champagne Building, Plan 10, 3,113 sq. ft. as to Champagne Building, Plan 11, 2,116 sq. ft. as to Champagne Building, Plan 12, 2,116 sq. ft. as to Champagne Building, Plan 13, 2,125 sq. ft. as to Champagne Building, Plan 14, 1,461 sq. ft. as to Champagne Building, Plan 15, 1,461 sq. ft. as to Champagne Building, Plan 16, 2,957 sq. ft. as to Champagne Building, Plan 17, and 4,962 sq. ft. as to Champagne Building, Plan 18. All dimensions are estimates which will vary with actual construction, and all floor plans, specifications and other development plans are subject to change and will not necessarily accurately reflect the final plans and specifications for the development. All depictions of furniture, appliances, counters, soffits, floor coverings and other matters of detail, including, without limitation, items of finish and decoration, are conceptual only and are not necessarily included in each Unit. Said items are only included if and to the extent provided in your purchase agreement. Please note that the Total area listed above includes the proposed square footage of terraces and a private garage. Note that those components are not part of the Unit, but rather are appurtenances as to which purchasers may be assigned exclusive use. The terrace dimensions vary and the area stated relates to the largest terrace. The actual terrace may be smaller. See the declaration for the specific dimensions of any terrace appurtenant to a particular unit. Dimensions of parking garages vary and may not be as stated, and private garages are included with a purchase to the extent expressly provided in the purchase agreement.

Armand Building, Plan 4 3 Bedrooms, 4.5 Baths Plus Clubroom

Residence	AC Living Area	Terrace	Private Garage	Total
604	4,967 sq. ft.	1,670 sq. ft.	3-Car	6,637 sq. ft.
504	4,967 sq. ft.	1,560 sq. ft.	2-Car	6,527 sq. ft.
404	4,967 sq. ft.	1,454 sq. ft.	2-Car	6,421 sq. ft.
304	4,967 sq. ft.	1,350 sq. ft.	2-Car	6,317 sq. ft.
204	4,967 sq. ft.	3,803 sq. ft.	2-Car	8,770 sq. ft.

Terrace square footage varies by Residence



Stated "AC Living Area" is measured to the exterior boundaries of the exterior walls and the centerline of interior demising walls and in fact varies from the square footage and dimensions that would be determined by using the description and definition of the "Unit" set forth in the Declaration (which generally only includes the interior airspace between the perimeter walls and excludes all interior structural components and other common elements). This method is generally used in sales materials and is provided to allow a prospective buyer to compare the Units with units in other condominium projects that utilize the same method. The AC Living Area of each Unit type, calculated in accordance with the definition set forth in the Condominium Declaration, would be: 5,591 sq. ft. as to Armand Building, Plan 1, 4,755 sq. ft. as to Armand Building, Plan 2, 3,954 sq. ft. as to Armand Building, Plan 3, 4,681 sq. ft. as to Armand Building, Plan 4, 3,734 sq. ft. as to Bateau Building, Plan 5, 2,226 sq. ft. as to Bateau Building, Plan 6, 1,631 sq. ft. as to Bateau Building, Plan 7, 3,734 sq. ft. as to Bateau Building, Plan 8, 4,961 sq. ft. as to Champagne Building, Plan 9, 2,932 sq. ft. as to Champagne Building, Plan 10, 3,113 sq. ft. as to Champagne Building, Plan 11, 2,116 sq. ft. as to Champagne Building, Plan 12, 2,116 sq. ft. as to Champagne Building, Plan 13, 2,125 sq. ft. as to Champagne Building, Plan 14, 1,461 sq. ft. as to Champagne Building, Plan 15, 1,461 sq. ft. as to Champagne Building, Plan 16, 2,957 sq. ft. as to Champagne Building, Plan 17, and 4,962 sq. ft. as to Champagne Building, Plan 18. All dimensions are estimates which will vary with actual construction, and all floor plans, specifications and other development plans are subject to change and will not necessarily accurately reflect the final plans and specifications for the development. All depictions of furniture, appliances, counters, soffits, floor coverings and other matters of detail, including, without limitation, items of finish and decoration, are conceptual only and are not necessarily included in each Unit. Said items are only included if and to the extent provided in your purchase agreement. Please note that the Total area listed above includes the proposed square footage of terraces and a private garage. Note that those components are not part of the Unit, but rather are appurtenances as to which purchasers may be assigned exclusive use. The terrace dimensions vary and the area stated relates to the largest terrace. The actual terrace may be smaller. See the declaration for the specific dimensions of any terrace appurtenant to a particular unit. Dimensions of parking garages vary and may not be as stated, and private garages are included with a purchase to the extent expressly provided in the purchase agreement.

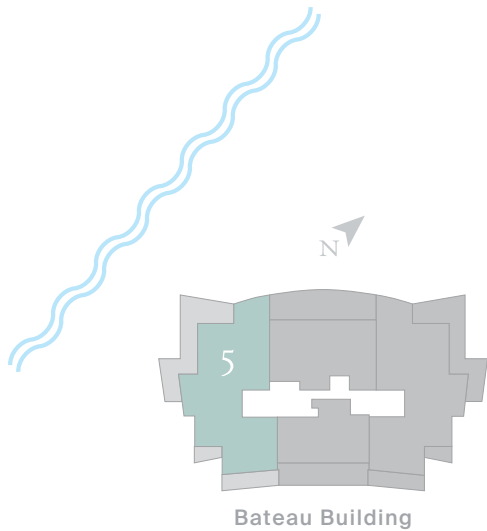


## The Bateau Building

Bateau Building, Plan 5 4 Bedrooms, 4.5 Baths

Residence	AC Living Area	Terrace	Private Garage	Total
605	4,017 sq. ft.	1,401 sq. ft.	3-Car	5,418 sq. ft.
505	4,017 sq. ft.	1,359 sq. ft.	2-Car	5,376 sq. ft.
405	4,017 sq. ft.	1,316 sq. ft.	2-Car	5,333 sq. ft.
305	4,017 sq. ft.	1,273 sq. ft.	2-Car	5,290 sq. ft.
205	4,017 sq. ft.	5,564 sq. ft.	2-Car	9,581 sq. ft.

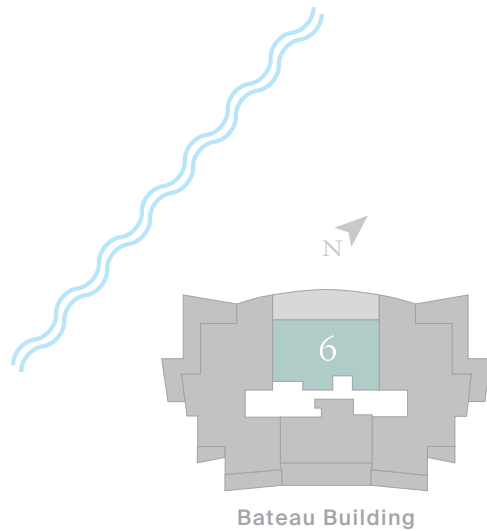
Terrace square footage varies by Residence



Bateau Building, Plan 6 2 Bedrooms, 2.5 Baths

Residence	AC Living Area	Terrace	Private Garage	Total
606	2,347 sq. ft.	1,065 sq. ft.	3-Car	3,412 sq. ft.
506	2,347 sq. ft.	980 sq. ft.	2-Car	3,327 sq. ft.
406	2,347 sq. ft.	896 sq. ft.	2-Car	3,243 sq. ft.
306	2,347 sq. ft.	811 sq. ft.	2-Car	3,158 sq. ft.
206	2,347 sq. ft.	4,454 sq. ft.	2-Car	6,801 sq. ft.

Terrace square footage varies by Residence

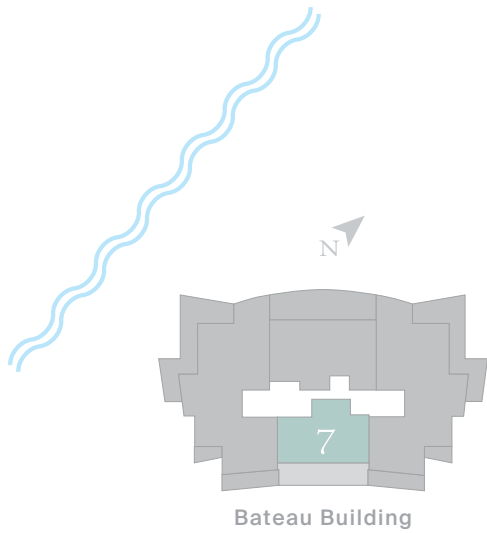


Stated "AC Living Area" is measured to the exterior boundaries of the exterior walls and the centerline of interior demising walls and in fact varies from the square footage and dimensions that would be determined by using the description and definition of the "Unit" set forth in the Declaration (which generally only includes the interior airspace between the perimeter walls and excludes all interior structural components and other common elements). This method is generally used in sales materials and is provided to allow a prospective buyer to compare the Units with units in other condominium projects that utilize the same method. The AC Living Area of each Unit type, calculated in accordance with the definition set forth in the Condominium Declaration, would be: 5,591 sq. ft. as to Armand Building, Plan 1, 4,755 sq. ft. as to Armand Building, Plan 2, 3,954 sq. ft. as to Armand Building, Plan 3, 4,681 sq. ft. as to Armand Building, Plan 4, 3,734 sq. ft. as to Bateau Building, Plan 5, 2,226 sq. ft. as to Bateau Building, Plan 6, 1,631 sq. ft. as to Bateau Building, Plan 7, 3,734 sq. ft. as to Bateau Building, Plan 8, 4,961 sq. ft. as to Champagne Building, Plan 9, 2,932 sq. ft. as to Champagne Building, Plan 10, 3,113 sq. ft. as to Champagne Building, Plan 11, 2,116 sq. ft. as to Champagne Building, Plan 12, 2,116 sq. ft. as to Champagne Building, Plan 13, 2,125 sq. ft. as to Champagne Building, Plan 14, 1,461 sq. ft. as to Champagne Building, Plan 15, 1,461 sq. ft. as to Champagne Building, Plan 16, 2,957 sq. ft. as to Champagne Building, Plan 17, and 4,962 sq. ft. as to Champagne Building, Plan 18. All dimensions are estimates which will vary with actual construction, and all floor plans, specifications and other development plans are subject to change and will not necessarily accurately reflect the final plans and specifications for the development. All depictions of furniture, appliances, counters, soffits, floor coverings and other matters of detail, including, without limitation, items of finish and decoration, are conceptual only and are not necessarily included in each Unit. Said items are only included if and to the extent provided in your purchase agreement. Please note that the Total area listed above includes the proposed square footage of terraces and a private garage. Note that those components are not part of the Unit, but rather are appurtenances as to which purchasers may be assigned exclusive use. The terrace dimensions vary and the area stated relates to the largest terrace. The actual terrace may be smaller. See the declaration for the specific dimensions of any terrace appurtenant to a particular unit. Dimensions of parking garages vary and may not be as stated, and private garages are include with a purchase to the extent expressly provided in the purchase agreement.

Stated "AC Living Area" is measured to the exterior boundaries of the exterior walls and the centerline of interior demising walls and in fact varies from the square footage and dimensions that would be determined by using the description and definition of the "Unit" set forth in the Declaration (which generally only includes the interior airspace between the perimeter walls and excludes all interior structural components and other common elements). This method is generally used in sales materials and is provided to allow a prospective buyer to compare the Units with units in other condominium projects that utilize the same method. The AC Living Area of each Unit type, calculated in accordance with the definition set forth in the Condominium Declaration, would be: 5,591 sq. ft. as to Armand Building, Plan 1, 4,755 sq. ft. as to Armand Building, Plan 2, 3,954 sq. ft. as to Armand Building, Plan 3, 4,681 sq. ft. as to Armand Building, Plan 4, 3,734 sq. ft. as to Bateau Building, Plan 5, 2,226 sq. ft. as to Bateau Building, Plan 6, 1,631 sq. ft. as to Bateau Building, Plan 7, 3,734 sq. ft. as to Bateau Building, Plan 8, 4,961 sq. ft. as to Champagne Building, Plan 9, 2,932 sq. ft. as to Champagne Building, Plan 10, 3,113 sq. ft. as to Champagne Building, Plan 11, 2,116 sq. ft. as to Champagne Building, Plan 12, 2,116 sq. ft. as to Champagne Building, Plan 13, 2,125 sq. ft. as to Champagne Building, Plan 14, 1,461 sq. ft. as to Champagne Building, Plan 15, 1,461 sq. ft. as to Champagne Building, Plan 16, 2,957 sq. ft. as to Champagne Building, Plan 17, and 4,962 sq. ft. as to Champagne Building, Plan 18. All dimensions are estimates which will vary with actual construction, and all floor plans, specifications and other development plans are subject to change and will not necessarily accurately reflect the final plans and specifications for the development. All depictions of furniture, appliances, counters, soffits, floor coverings and other matters of detail, including, without limitation, items of finish and decoration, are conceptual only and are not necessarily included in each Unit. Said items are only included if and to the extent provided in your purchase agreement. Please note that the Total area listed above includes the proposed square footage of terraces and a private garage. Note that those components are not part of the Unit, but rather are appurtenances as to which purchasers may be assigned exclusive use. The terrace dimensions vary and the area stated relates to the largest terrace. The actual terrace may be smaller. See the declaration for the specific dimensions of any terrace appurtenant to a particular unit. Dimensions of parking garages vary and may not be as stated, and private garages are include with a purchase to the extent expressly provided in the purchase agreement.

Bateau Building, Plan 7 1 Bedroom, 1.5 Baths

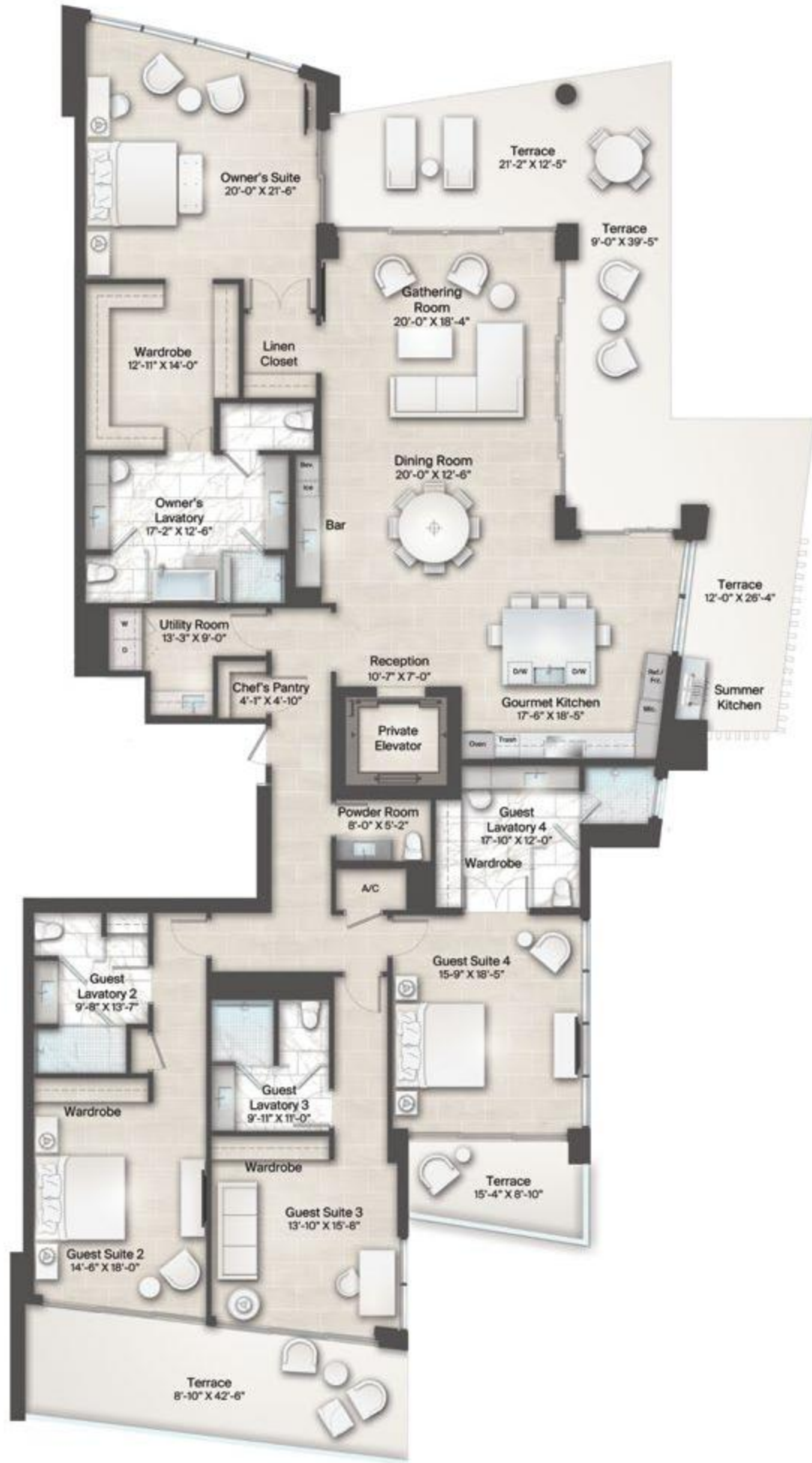
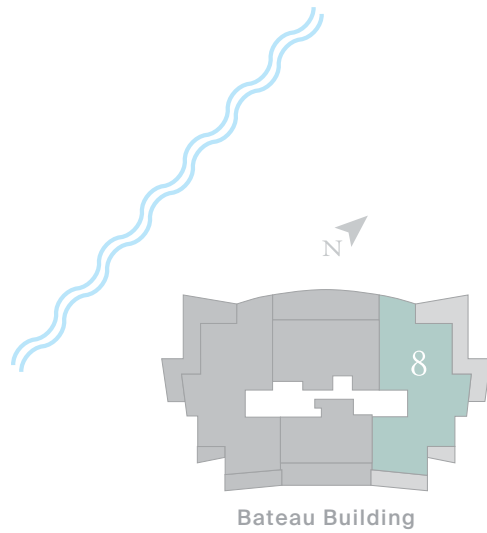
Residence	AC Living Area	Terrace	Private Garage	Total
607	1,721 sq. ft.	602 sq. ft.	2-Car	2,323 sq. ft.
507	1,721 sq. ft.	602 sq. ft.	1-Car	2,323 sq. ft.
407	1,721 sq. ft.	602 sq. ft.	1-Car	2,323 sq. ft.
307	1,721 sq. ft.	602 sq. ft.	1-Car	2,323 sq. ft.
207	1,721 sq. ft.	602 sq. ft.	1-Car	2,323 sq. ft.



Bateau Building, Plan 8 4 Bedrooms, 4.5 Baths

Residence	AC Living Area	Terrace	Private Garage	Total
608	4,017 sq. ft.	1,401 sq. ft.	3-Car	5,418 sq. ft.
508	4,017 sq. ft.	1,359 sq. ft.	2-Car	5,376 sq. ft.
408	4,017 sq. ft.	1,316 sq. ft.	2-Car	5,333 sq. ft.
308	4,017 sq. ft.	1,273 sq. ft.	2-Car	5,290 sq. ft.
208	4,017 sq. ft.	5,564 sq. ft.	2-Car	9,581 sq. ft.

Terrace square footage varies by Residence



Stated "AC Living Area" is measured to the exterior boundaries of the exterior walls and the centerline of interior demising walls and in fact varies from the square footage and dimensions that would be determined by using the description and definition of the "Unit" set forth in the Declaration (which generally only includes the interior airspace between the perimeter walls and excludes all interior structural components and other common elements). This method is generally used in sales materials and is provided to allow a prospective buyer to compare the Units with units in other condominium projects that utilize the same method. The AC Living Area of each Unit type, calculated in accordance with the definition set forth in the Condominium Declaration, would be: 5,591 sq. ft. as to Armand Building, Plan 1, 4,755 sq. ft. as to Armand Building, Plan 2, 3,954 sq. ft. as to Armand Building, Plan 3, 4,681 sq. ft. as to Armand Building, Plan 4, 3,734 sq. ft. as to Bateau Building, Plan 5, 2,228 sq. ft. as to Bateau Building, Plan 6, 1,631 sq. ft. as to Bateau Building, Plan 7, 3,734 sq. ft. as to Bateau Building, Plan 8, 4,961 sq. ft. as to Champagne Building, Plan 9, 2,932 sq. ft. as to Champagne Building, Plan 10, 3,113 sq. ft. as to Champagne Building, Plan 11, 2,116 sq. ft. as to Champagne Building, Plan 12, 2,116 sq. ft. as to Champagne Building, Plan 13, 2,125 sq. ft. as to Champagne Building, Plan 14, 1,461 sq. ft. as to Champagne Building, Plan 15, 1,461 sq. ft. as to Champagne Building, Plan 16, 2,957 sq. ft. as to Champagne Building, Plan 17, and 4,962 sq. ft. as to Champagne Building, Plan 18. All dimensions are estimates which will vary with actual construction, and all floor plans, specifications and other development plans are subject to change and will not necessarily accurately reflect the final plans and specifications for the development. All depictions of furniture, appliances, counters, soffits, floor coverings and other matters of detail, including, without limitation, items of finish and decoration, are conceptual only and are not necessarily included in each Unit. Said items are only included if and to the extent provided in your purchase agreement. Please note that the Total area listed above includes the proposed square footage of terraces and a private garage. Note that those components are not part of the Unit, but rather are appurtenances as to which purchasers may be assigned exclusive use. The terrace dimensions vary and the area stated relates to the largest terrace. The actual terrace may be smaller. See the declaration for the specific dimensions of any terrace appurtenant to a particular unit. Dimensions of parking garages vary and may not be as stated, and private garages are include with a purchase to the extent expressly provided in the purchase agreement.

Stated "AC Living Area" is measured to the exterior boundaries of the exterior walls and the centerline of interior demising walls and in fact varies from the square footage and dimensions that would be determined by using the description and definition of the "Unit" set forth in the Declaration (which generally only includes the interior airspace between the perimeter walls and excludes all interior structural components and other common elements). This method is generally used in sales materials and is provided to allow a prospective buyer to compare the Units with units in other condominium projects that utilize the same method. The AC Living Area of each Unit type, calculated in accordance with the definition set forth in the Condominium Declaration, would be: 5,591 sq. ft. as to Armand Building, Plan 1, 4,755 sq. ft. as to Armand Building, Plan 2, 3,954 sq. ft. as to Armand Building, Plan 3, 4,681 sq. ft. as to Armand Building, Plan 4, 3,734 sq. ft. as to Bateau Building, Plan 5, 2,228 sq. ft. as to Bateau Building, Plan 6, 1,631 sq. ft. as to Bateau Building, Plan 7, 3,734 sq. ft. as to Bateau Building, Plan 8, 4,961 sq. ft. as to Champagne Building, Plan 9, 2,932 sq. ft. as to Champagne Building, Plan 10, 3,113 sq. ft. as to Champagne Building, Plan 11, 2,116 sq. ft. as to Champagne Building, Plan 12, 2,116 sq. ft. as to Champagne Building, Plan 13, 2,125 sq. ft. as to Champagne Building, Plan 14, 1,461 sq. ft. as to Champagne Building, Plan 15, 1,461 sq. ft. as to Champagne Building, Plan 16, 2,957 sq. ft. as to Champagne Building, Plan 17, and 4,962 sq. ft. as to Champagne Building, Plan 18. All dimensions are estimates which will vary with actual construction, and all floor plans, specifications and other development plans are subject to change and will not necessarily accurately reflect the final plans and specifications for the development. All depictions of furniture, appliances, counters, soffits, floor coverings and other matters of detail, including, without limitation, items of finish and decoration, are conceptual only and are not necessarily included in each Unit. Said items are only included if and to the extent provided in your purchase agreement. Please note that the Total area listed above includes the proposed square footage of terraces and a private garage. Note that those components are not part of the Unit, but rather are appurtenances as to which purchasers may be assigned exclusive use. The terrace dimensions vary and the area stated relates to the largest terrace. The actual terrace may be smaller. See the declaration for the specific dimensions of any terrace appurtenant to a particular unit. Dimensions of parking garages vary and may not be as stated, and private garages are include with a purchase to the extent expressly provided in the purchase agreement.



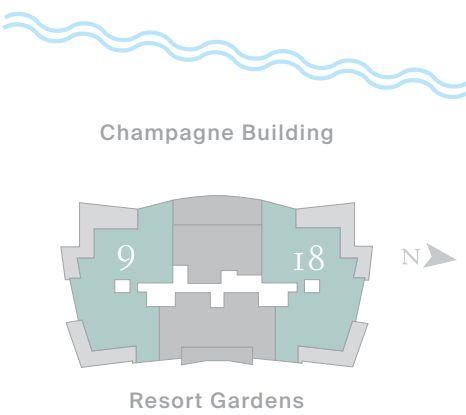
Artist's Concept

## The Champagne Building

Champagne Building, Plans 9 & 18 4 Bedrooms, 5.5 Baths

Residence	AC Living Area	Terrace	Private Garage	Total
609	5,320 sq. ft.	1,736 sq. ft.	3-Car	7,056 sq. ft.
209	5,320 sq. ft.	10,290 sq. ft.	2-Car	15,610 sq. ft.
618	5,320 sq. ft.	1,736 sq. ft.	3-Car	7,056 sq. ft.
218	5,320 sq. ft.	10,480 sq. ft.	2-Car	15,800 sq. ft.

Terrace square footage varies by Residence

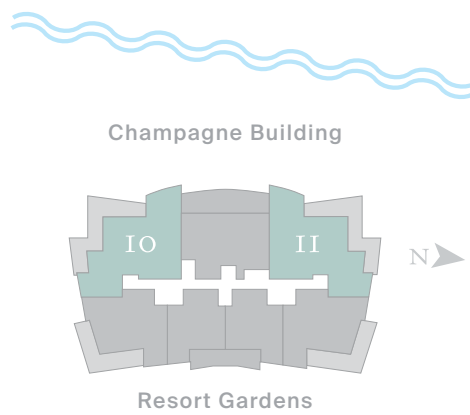


Stated "AC Living Area" is measured to the exterior boundaries of the exterior walls and the centerline of interior demising walls and in fact varies from the square footage and dimensions that would be determined by using the description and definition of the "Unit" set forth in the Declaration (which generally only includes the interior airspace between the perimeter walls and excludes all interior structural components and other common elements). This method is generally used in sales materials and is provided to allow a prospective buyer to compare the Units with units in other condominium projects that utilize the same method. The AC Living Area of each Unit type, calculated in accordance with the definition set forth in the Condominium Declaration, would be: 5,591 sq. ft. as to Armand Building, Plan 1, 4,755 sq. ft. as to Armand Building, Plan 2, 3,954 sq. ft. as to Armand Building, Plan 3, 4,681 sq. ft. as to Bateau Building, Plan 4, 3,734 sq. ft. as to Bateau Building, Plan 5, 2,226 sq. ft. as to Bateau Building, Plan 6, 1,631 sq. ft. as to Bateau Building, Plan 7, 3,734 sq. ft. as to Bateau Building, Plan 8, 4,961 sq. ft. as to Champagne Building, Plan 9, 2,932 sq. ft. as to Champagne Building, Plan 10, 3,113 sq. ft. as to Champagne Building, Plan 11, 2,116 sq. ft. as to Champagne Building, Plan 12, 2,116 sq. ft. as to Champagne Building, Plan 13, 2,125 sq. ft. as to Champagne Building, Plan 14, 1,461 sq. ft. as to Champagne Building, Plan 15, 1,461 sq. ft. as to Champagne Building, Plan 16, 2,957 sq. ft. as to Champagne Building, Plan 17, and 4,962 sq. ft. as to Champagne Building, Plan 18. All dimensions are estimates which will vary with actual construction, and all floor plans, specifications and other development plans are subject to change and will not necessarily accurately reflect the final plans and specifications for the development. All depictions of furniture, appliances, counters, soffits, floor coverings and other matters of detail, including, without limitation, items of finish and decoration, are conceptual only and are not necessarily included in each Unit. Said items are only included if and to the extent provided in your purchase agreement. Please note that the Total area listed above includes the proposed square footage of terraces and a private garage. Note that those components are not part of the Unit, but rather are appurtenances as to which purchasers may be assigned exclusive use. The terrace dimensions vary and the area stated relates to the largest terrace. The actual terrace may be smaller. See the declaration for the specific dimensions of any terrace appurtenant to a particular unit. Dimensions of parking garages vary and may not be as stated, and private garages are include with a purchase to the extent expressly provided in the purchase agreement.

Champagne Building, Plans 10 & 11 2 Bedrooms, 2.5 Baths

Residence	AC Living Area	Terrace	Private Garage	Total
510	3,130 sq. ft.	1,030 sq. ft.	2-Car	4,160 sq. ft.
410	3,130 sq. ft.	971 sq. ft.	2-Car	4,101 sq. ft.
310	3,130 sq. ft.	912 sq. ft.	2-Car	4,042 sq. ft.
511	3,130 sq. ft.	1,030 sq. ft.	2-Car	4,160 sq. ft.
411	3,130 sq. ft.	971 sq. ft.	2-Car	4,101 sq. ft.
311	3,130 sq. ft.	912 sq. ft.	2-Car	4,042 sq. ft.

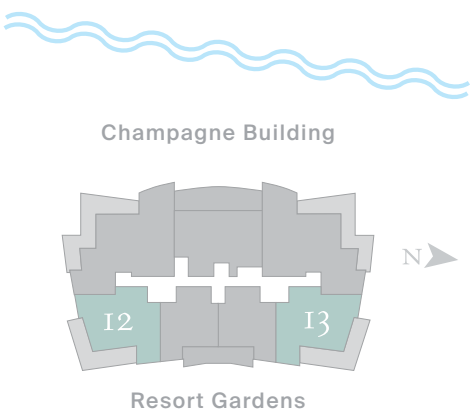
Terrace square footage varies by Residence



Stated "AC Living Area" is measured to the exterior boundaries of the exterior walls and the centerline of interior demising walls and in fact varies from the square footage and dimensions that would be determined by using the description and definition of the "Unit" set forth in the Declaration (which generally only includes the interior airspace between the perimeter walls and excludes all interior structural components and other common elements). This method is generally used in sales materials and is provided to allow a prospective buyer to compare the Units with units in other condominium projects that utilize the same method. The AC Living Area of each Unit type, calculated in accordance with the definition set forth in the Condominium Declaration, would be: 5,591 sq. ft. as to Armand Building, Plan 1, 4,755 sq. ft. as to Armand Building, Plan 2, 3,954 sq. ft. as to Armand Building, Plan 3, 4,681 sq. ft. as to Bateau Building, Plan 4, 3,734 sq. ft. as to Bateau Building, Plan 5, 2,226 sq. ft. as to Bateau Building, Plan 6, 1,631 sq. ft. as to Bateau Building, Plan 7, 3,734 sq. ft. as to Bateau Building, Plan 8, 4,961 sq. ft. as to Champagne Building, Plan 9, 2,932 sq. ft. as to Champagne Building, Plan 10, 3,113 sq. ft. as to Champagne Building, Plan 11, 2,116 sq. ft. as to Champagne Building, Plan 12, 2,116 sq. ft. as to Champagne Building, Plan 13, 2,125 sq. ft. as to Champagne Building, Plan 14, 1,461 sq. ft. as to Champagne Building, Plan 15, 1,461 sq. ft. as to Champagne Building, Plan 16, 2,957 sq. ft. as to Champagne Building, Plan 17, and 4,962 sq. ft. as to Champagne Building, Plan 18. All dimensions are estimates which will vary with actual construction, and all floor plans, specifications and other development plans are subject to change and will not necessarily accurately reflect the final plans and specifications for the development. All depictions of furniture, appliances, counters, soffits, floor coverings and other matters of detail, including, without limitation, items of finish and decoration, are conceptual only and are not necessarily included in each Unit. Said items are only included if and to the extent provided in your purchase agreement. Please note that the Total area listed above includes the proposed square footage of terraces and a private garage. Note that those components are not part of the Unit, but rather are appurtenances as to which purchasers may be assigned exclusive use. The terrace dimensions vary and the area stated relates to the largest terrace. The actual terrace may be smaller. See the declaration for the specific dimensions of any terrace appurtenant to a particular unit. Dimensions of parking garages vary and may not be as stated, and private garages are include with a purchase to the extent expressly provided in the purchase agreement.

Champagne Building, Plans I2 & I3 2 Bedrooms, 2.5 Baths

Residence	AC Living Area	Terrace	Private Garage	Total
512	2,154 sq. ft.	646 sq. ft.	2-Car	2,800 sq. ft.
412	2,154 sq. ft.	646 sq. ft.	2-Car	2,800 sq. ft.
312	2,154 sq. ft.	646 sq. ft.	2-Car	2,800 sq. ft.
513	2,154 sq. ft.	646 sq. ft.	2-Car	2,800 sq. ft.
413	2,154 sq. ft.	646 sq. ft.	2-Car	2,800 sq. ft.
313	2,154 sq. ft.	646 sq. ft.	2-Car	2,800 sq. ft.

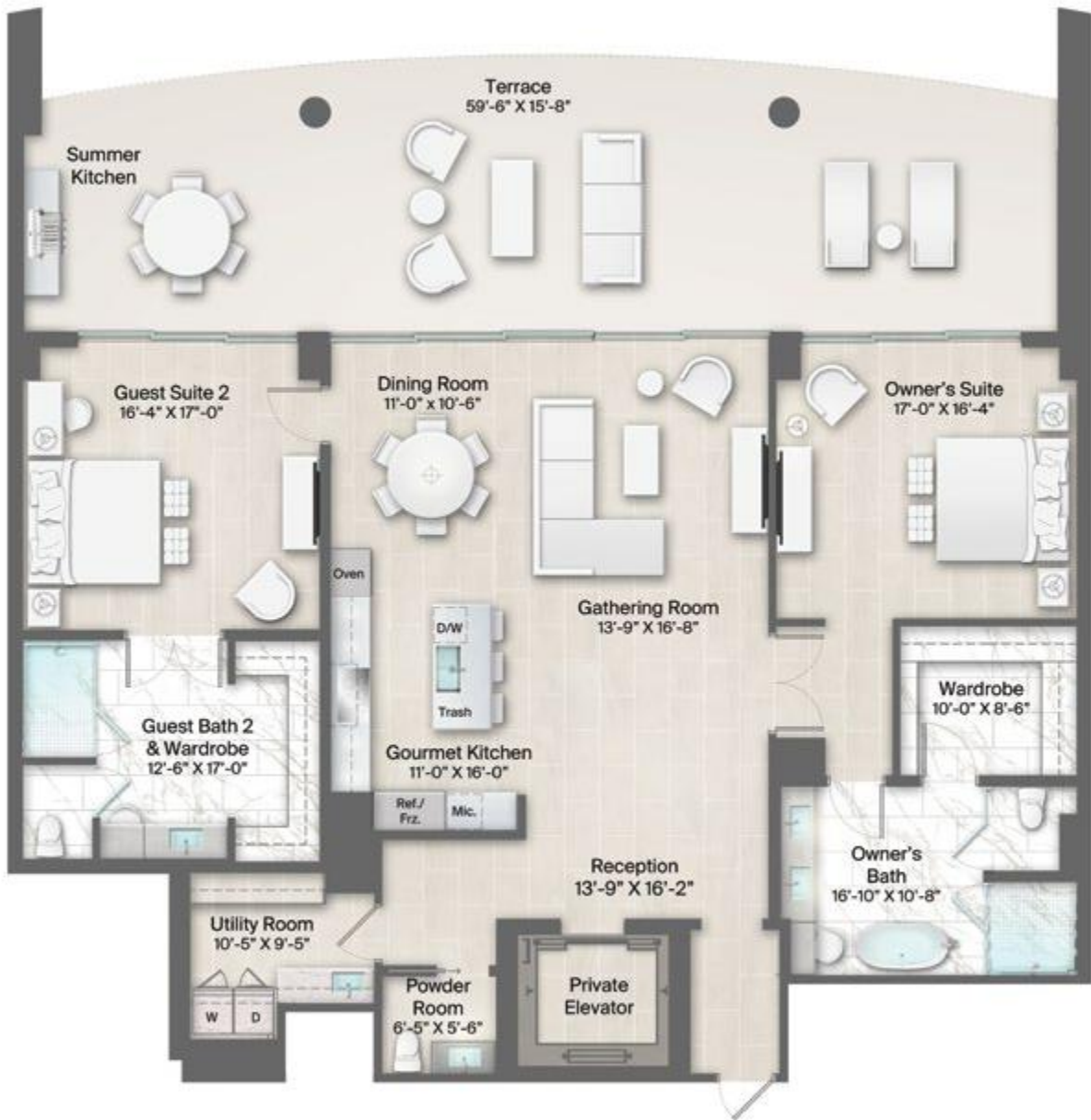
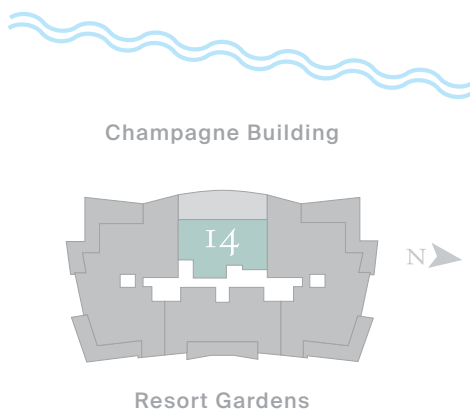


Stated "AC Living Area" is measured to the exterior boundaries of the exterior walls and the centerline of interior demising walls and in fact varies from the square footage and dimensions that would be determined by using the description and definition of the "Unit" set forth in the Declaration (which generally only includes the interior airspace between the perimeter walls and excludes all interior structural components and other common elements). This method is generally used in sales materials and is provided to allow a prospective buyer to compare the Units with units in other condominium projects that utilize the same method. The AC Living Area of each Unit type, calculated in accordance with the definition set forth in the Condominium Declaration, would be: 5,591 sq. ft. as to Armand Building, Plan 1, 4,755 sq. ft. as to Armand Building, Plan 2, 3,954 sq. ft. as to Armand Building, Plan 3, 4,681 sq. ft. as to Armand Building, Plan 4, 3,734 sq. ft. as to Bateau Building, Plan 5, 2,226 sq. ft. as to Bateau Building, Plan 6, 1,631 sq. ft. as to Bateau Building, Plan 7, 3,734 sq. ft. as to Bateau Building, Plan 8, 4,961 sq. ft. as to Champagne Building, Plan 9, 2,932 sq. ft. as to Champagne Building, Plan 10, 3,113 sq. ft. as to Champagne Building, Plan 11, 2,116 sq. ft. as to Champagne Building, Plan 12, 2,116 sq. ft. as to Champagne Building, Plan 13, 2,125 sq. ft. as to Champagne Building, Plan 14, 1,461 sq. ft. as to Champagne Building, Plan 15, 1,461 sq. ft. as to Champagne Building, Plan 16, 2,957 sq. ft. as to Champagne Building, Plan 17, and 4,962 sq. ft. as to Champagne Building, Plan 18. All dimensions are estimates which will vary with actual construction, and all floor plans, specifications and other development plans are subject to change and will not necessarily accurately reflect the final plans and specifications for the development. All depictions of furniture, appliances, counters, soffits, floor coverings and other matters of detail, including, without limitation, items of finish and decoration, are conceptual only and are not necessarily included in each Unit. Said items are only included if and to the extent provided in your purchase agreement. Please note that the Total area listed above includes the proposed square footage of terraces and a private garage. Note that those components are not part of the Unit, but rather are appurtenances as to which purchasers may be assigned exclusive use. The terrace dimensions vary and the area stated relates to the largest terrace. The actual terrace may be smaller. See the declaration for the specific dimensions of any terrace appurtenant to a particular unit. Dimensions of parking garages vary and may not be as stated, and private garages are include with a purchase to the extent expressly provided in the purchase agreement.

Champagne Building, Plan I4 2 Bedrooms, 2.5 Baths

Residence	AC Living Area	Terrace	Private Garage	Total
614	2,249 sq. ft.	1,159 sq. ft.	3-Car	3,408 sq. ft.
514	2,249 sq. ft.	1,052 sq. ft.	2-Car	3,301 sq. ft.
414	2,249 sq. ft.	965 sq. ft.	2-Car	3,214 sq. ft.
314	2,249 sq. ft.	878 sq. ft.	2-Car	3,127 sq. ft.
214	2,249 sq. ft.	3,953 sq. ft.	2-Car	6,202 sq. ft.

Terrace square footage varies by Residence

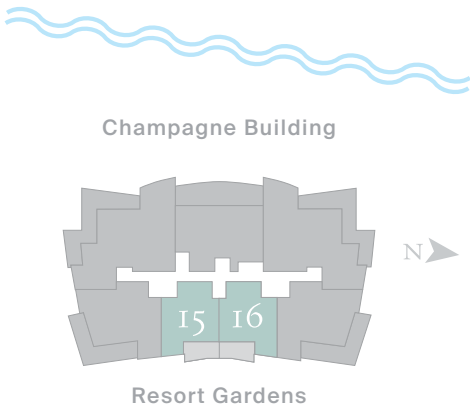


Stated "AC Living Area" is measured to the exterior boundaries of the exterior walls and the centerline of interior demising walls and in fact varies from the square footage and dimensions that would be determined by using the description and definition of the "Unit" set forth in the Declaration (which generally only includes the interior airspace between the perimeter walls and excludes all interior structural components and other common elements). This method is generally used in sales materials and is provided to allow a prospective buyer to compare the Units with units in other condominium projects that utilize the same method. The AC Living Area of each Unit type, calculated in accordance with the definition set forth in the Condominium Declaration, would be: 5,591 sq. ft. as to Armand Building, Plan 1, 4,755 sq. ft. as to Armand Building, Plan 2, 3,954 sq. ft. as to Armand Building, Plan 3, 4,681 sq. ft. as to Armand Building, Plan 4, 3,734 sq. ft. as to Bateau Building, Plan 5, 2,226 sq. ft. as to Bateau Building, Plan 6, 1,631 sq. ft. as to Bateau Building, Plan 7, 3,734 sq. ft. as to Bateau Building, Plan 8, 4,961 sq. ft. as to Champagne Building, Plan 9, 2,932 sq. ft. as to Champagne Building, Plan 10, 3,113 sq. ft. as to Champagne Building, Plan 11, 2,116 sq. ft. as to Champagne Building, Plan 12, 2,116 sq. ft. as to Champagne Building, Plan 13, 2,125 sq. ft. as to Champagne Building, Plan 14, 1,461 sq. ft. as to Champagne Building, Plan 15, 1,461 sq. ft. as to Champagne Building, Plan 16, 2,957 sq. ft. as to Champagne Building, Plan 17, and 4,962 sq. ft. as to Champagne Building, Plan 18. All dimensions are estimates which will vary with actual construction, and all floor plans, specifications and other development plans are subject to change and will not necessarily accurately reflect the final plans and specifications for the development. All depictions of furniture, appliances, counters, soffits, floor coverings and other matters of detail, including, without limitation, items of finish and decoration, are conceptual only and are not necessarily included in each Unit. Said items are only included if and to the extent provided in your purchase agreement. Please note that the Total area listed above includes the proposed square footage of terraces and a private garage. Note that those components are not part of the Unit, but rather are appurtenances as to which purchasers may be assigned exclusive use. The terrace dimensions vary and the area stated relates to the largest terrace. The actual terrace may be smaller. See the declaration for the specific dimensions of any terrace appurtenant to a particular unit. Dimensions of parking garages vary and may not be as stated, and private garages are include with a purchase to the extent expressly provided in the purchase agreement.

Champagne Building, Plans 15 & 161 Bedroom, 1.5 Baths

Residence	AC Living Area	Terrace	Private Garage	Total
515	1,556 sq. ft.	250 sq. ft.	1-Car	1,806 sq. ft.
415	1,556 sq. ft.	250 sq. ft.	1-Car	1,806 sq. ft.
315	1,556 sq. ft.	250 sq. ft.	1-Car	1,806 sq. ft.
215	1,556 sq. ft.	765 sq. ft.	1-Car	2,321 sq. ft.
516	1,556 sq. ft.	250 sq. ft.	1-Car	1,806 sq. ft.
416	1,556 sq. ft.	250 sq. ft.	1-Car	1,806 sq. ft.
316	1,556 sq. ft.	250 sq. ft.	1-Car	1,806 sq. ft.
216	1,556 sq. ft.	765 sq. ft.	1-Car	2,321 sq. ft.

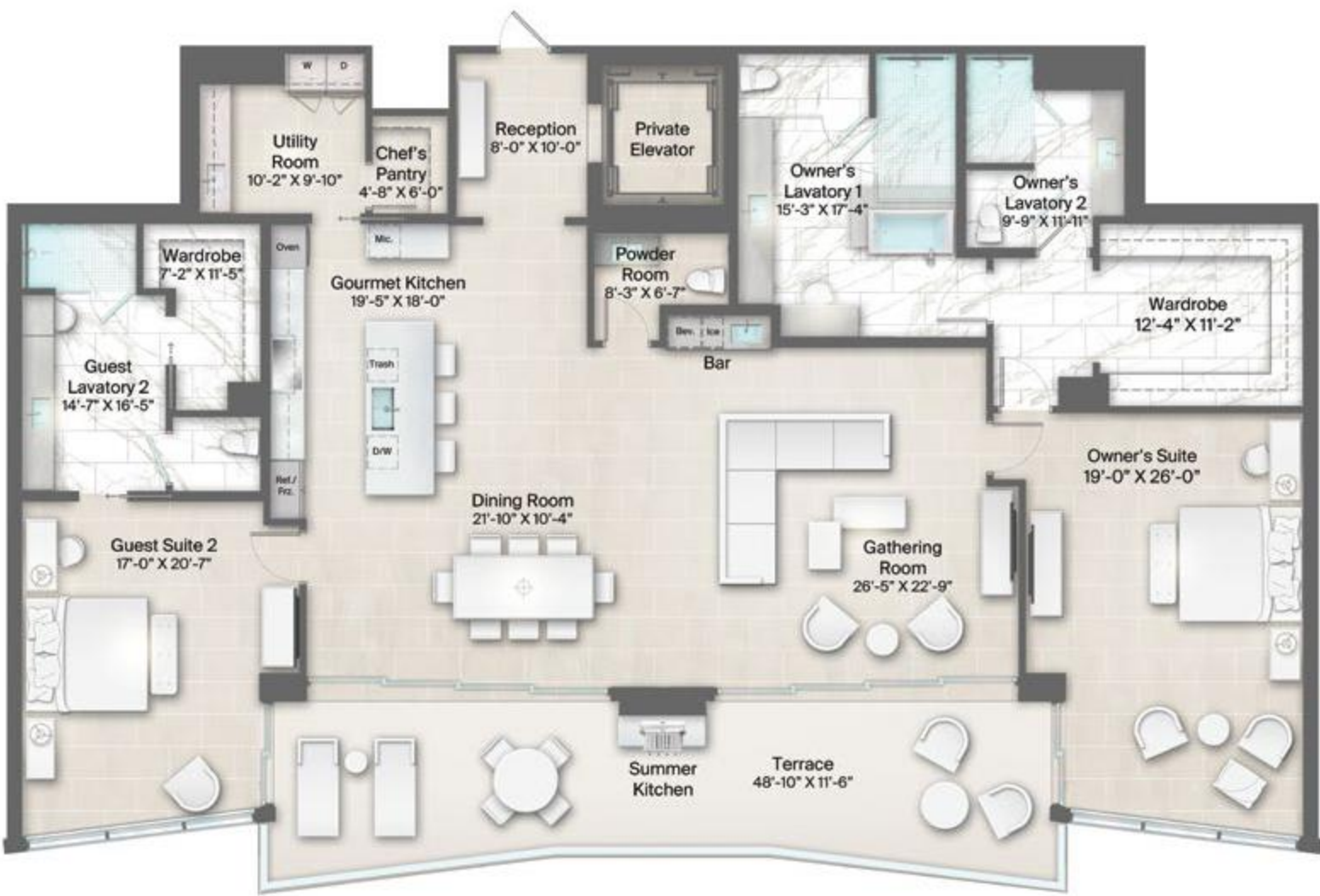
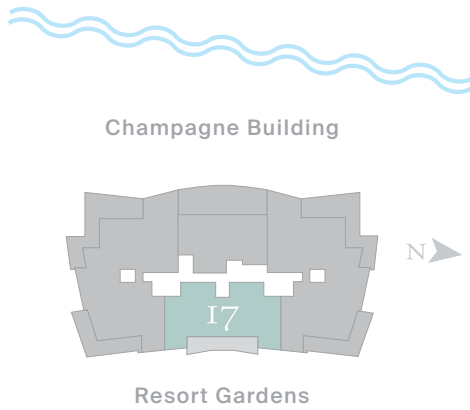
Terrace square footage varies by Residence



Stated "AC Living Area" is measured to the exterior boundaries of the exterior walls and the centerline of interior demising walls and in fact varies from the square footage and dimensions that would be determined by using the description and definition of the "Unit" set forth in the Declaration (which generally only includes the interior airspace between the perimeter walls and excludes all interior structural components and other common elements). This method is generally used in sales materials and is provided to allow a prospective buyer to compare the Units with units in other condominium projects that utilize the same method. The AC Living Area of each Unit type, calculated in accordance with the definition set forth in the Condominium Declaration, would be: 5,591 sq. ft. as to Armand Building, Plan 1, 4,755 sq. ft. as to Armand Building, Plan 2, 3,954 sq. ft. as to Armand Building, Plan 3, 4,681 sq. ft. as to Armand Building, Plan 4, 3,734 sq. ft. as to Bateau Building, Plan 5, 2,226 sq. ft. as to Bateau Building, Plan 6, 1,631 sq. ft. as to Bateau Building, Plan 7, 3,734 sq. ft. as to Bateau Building, Plan 8, 4,961 sq. ft. as to Champagne Building, Plan 9, 2,932 sq. ft. as to Champagne Building, Plan 10, 3,113 sq. ft. as to Champagne Building, Plan 11, 2,116 sq. ft. as to Champagne Building, Plan 12, 2,116 sq. ft. as to Champagne Building, Plan 13, 2,125 sq. ft. as to Champagne Building, Plan 14, 1,461 sq. ft. as to Champagne Building, Plan 15, 1,461 sq. ft. as to Champagne Building, Plan 16, 2,957 sq. ft. as to Champagne Building, Plan 17, and 4,962 sq. ft. as to Champagne Building, Plan 18. All dimensions are estimates which will vary with actual construction, and all floor plans, specifications and other development plans are subject to change and will not necessarily accurately reflect the final plans and specifications for the development. All depictions of furniture, appliances, counters, soffits, floor coverings and other matters of detail, including, without limitation, items of finish and decoration, are conceptual only and are not necessarily included in each Unit. Said items are only included if and to the extent provided in your purchase agreement. Please note that the Total area listed above includes the proposed square footage of terraces and a private garage. Note that those components are not part of the Unit, but rather are appurtenances as to which purchasers may be assigned exclusive use. The terrace dimensions vary and the area stated relates to the largest terrace. The actual terrace may be smaller. See the declaration for the specific dimensions of any terrace appurtenant to a particular unit. Dimensions of parking garages vary and may not be as stated, and private garages are include with a purchase to the extent expressly provided in the purchase agreement.

Champagne Building, Plan 172 Bedrooms, 3.5 Baths

Residence	AC Living Area	Terrace	Private Garage	Total
617	3,118 sq. ft.	500 sq. ft.	3-Car	3,618 sq. ft.



Stated "AC Living Area" is measured to the exterior boundaries of the exterior walls and the centerline of interior demising walls and in fact varies from the square footage and dimensions that would be determined by using the description and definition of the "Unit" set forth in the Declaration (which generally only includes the interior airspace between the perimeter walls and excludes all interior structural components and other common elements). This method is generally used in sales materials and is provided to allow a prospective buyer to compare the Units with units in other condominium projects that utilize the same method. The AC Living Area of each Unit type, calculated in accordance with the definition set forth in the Condominium Declaration, would be: 5,591 sq. ft. as to Armand Building, Plan 1, 4,755 sq. ft. as to Armand Building, Plan 2, 3,954 sq. ft. as to Armand Building, Plan 3, 4,681 sq. ft. as to Armand Building, Plan 4, 3,734 sq. ft. as to Bateau Building, Plan 5, 2,226 sq. ft. as to Bateau Building, Plan 6, 1,631 sq. ft. as to Bateau Building, Plan 7, 3,734 sq. ft. as to Bateau Building, Plan 8, 4,961 sq. ft. as to Champagne Building, Plan 9, 2,932 sq. ft. as to Champagne Building, Plan 10, 3,113 sq. ft. as to Champagne Building, Plan 11, 2,116 sq. ft. as to Champagne Building, Plan 12, 2,116 sq. ft. as to Champagne Building, Plan 13, 2,125 sq. ft. as to Champagne Building, Plan 14, 1,461 sq. ft. as to Champagne Building, Plan 15, 1,461 sq. ft. as to Champagne Building, Plan 16, 2,957 sq. ft. as to Champagne Building, Plan 17, and 4,962 sq. ft. as to Champagne Building, Plan 18. All dimensions are estimates which will vary with actual construction, and all floor plans, specifications and other development plans are subject to change and will not necessarily accurately reflect the final plans and specifications for the development. All depictions of furniture, appliances, counters, soffits, floor coverings and other matters of detail, including, without limitation, items of finish and decoration, are conceptual only and are not necessarily included in each Unit. Said items are only included if and to the extent provided in your purchase agreement. Please note that the Total area listed above includes the proposed square footage of terraces and a private garage. Note that those components are not part of the Unit, but rather are appurtenances as to which purchasers may be assigned exclusive use. The terrace dimensions vary and the area stated relates to the largest terrace. The actual terrace may be smaller. See the declaration for the specific dimensions of any terrace appurtenant to a particular unit. Dimensions of parking garages vary and may not be as stated, and private garages are include with a purchase to the extent expressly provided in the purchase agreement.