

## AMBUS® Gate

Automatic remote meter reading

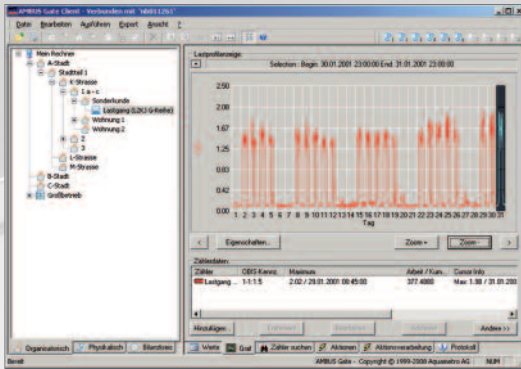


Energy data management system for automatic remote meter reading of electricity, gas, water and heat meters.

Solutions for your future



## System properties

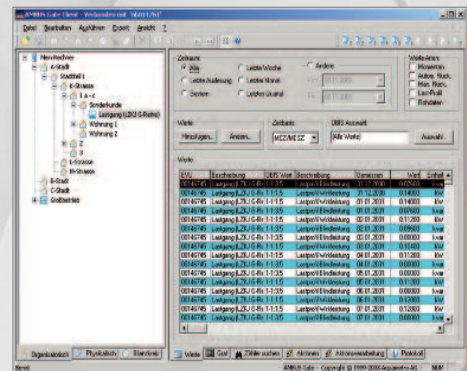


### Features:

- Runs under WINDOWS® XP, 2000 or Vista
- User interface similar to WINDOWS®-Explorer
- MS Access or MS SQL (up to 4 GB, included for free)
- Assignment of the meter values to OBIS standard
- Organizational and physical navigation
- Simple installation of new objects, modems and meters
- Meter test function
- Automatic, time-controlled reading processes for defined meter data
- LNS data base based on LON meter reading
- Automatic configuration of the connected modem
- Table representation of the meter data with extensive selection functions
- Administration of the cost group assignment
- Administration of the calibration validity
- Raw data representation
- Graphical representation of load profiles in monthly and daily view in 1-, ½-, ¼-hour and 5-, 10-minutes grid
- Computer-processing of load profiles
- Export of meter data in Edifact, MSCONS, ASCII or Excel-format
- Export of the meter data as file in freely-definable drive, as FTP-transfer or per email
- Meter search function with three connectable selection criterias
- Protocol function of all events
- Modular expandability

## Graphical interface

The AMBUS® Gate user interface is similar to the known interface of the Explorer. The left side serves as orientation for the different levels: Organizational, physical and accounting grid. The right side shows the meter data in graphical or table form and serves aside others for event administration and protocolling.



### System networks:

- radio system 868 MHz
- Bus systems (M-Bus, LONWORKS™)
- Meter interfaces CLO/CS (IEC 1107-protocol), FNP-protocol

**The reading occurs by:**

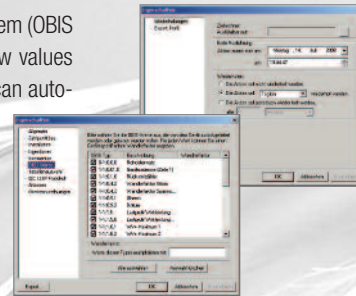
- Phone or GSM-modem
- Ethernet / TCP/IP
- RS232 interface
- Optical interface
- Mobile data recording unit (MDE)



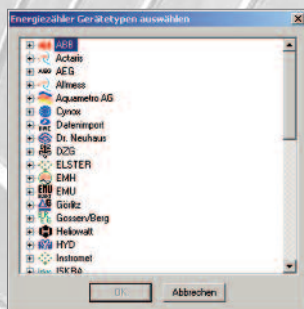
## Selection of meter data

The selection of the needed meter data is always done via the OBIS operating figure system (OBIS standard = Object Identification System). The AMBUS® Gate interprets the meter raw values and brings the data into a standardized form. Due to time-controlled events the user can automate the data reading and the data export.

For data export different formats can be selected such as Excel, ASCII or MSCons (EDIFACT), SAP.



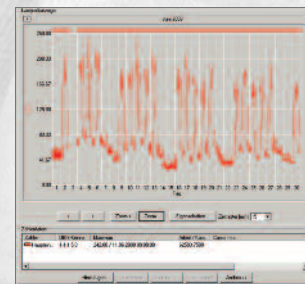
## Creation of meters



To add meters to reading list one can easily choose from the provided selection list of pre-configured meter types and modem connections. The meter list is updated on a regular basis and can easily be exchanged.

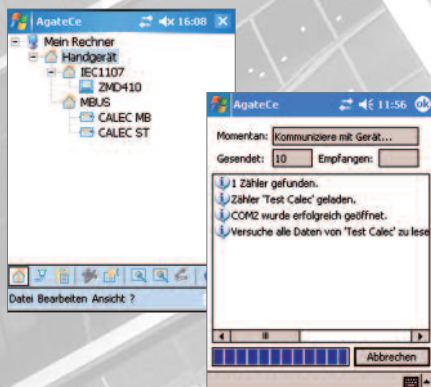
## Graphical analysis

The meter data can be represented graphically in AMBUS® Gate. The time and zoom factor can be selected based on requirements. Combinations of load profiles via calculations, e.g. totals formation or averaging can be created.



## Property management

The AMBUS® Gate Property Management allows meter data to be read electronically or manually from on site. After synchronising the mobile device (notebook, tablet) with the server, the data is fully integrated into the main database.





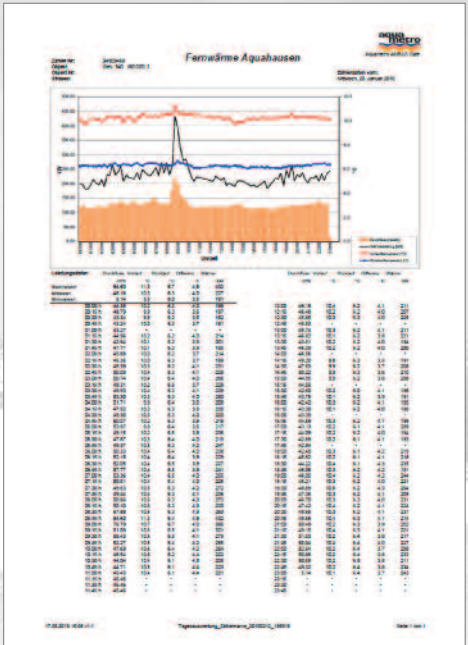
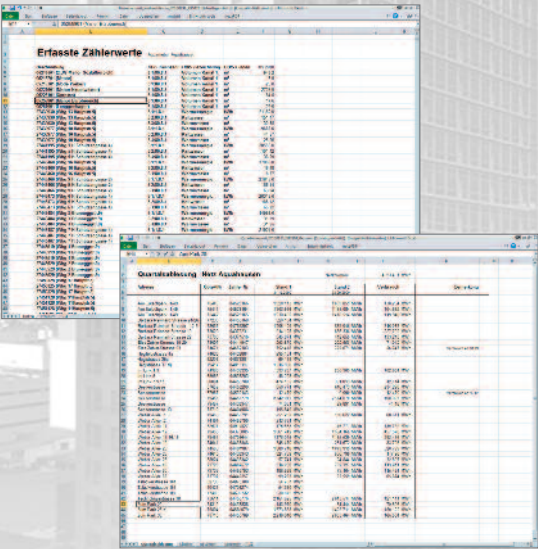
# Meter data service

The meter data service is aimed at network operators, industry and the property sector. If you would prefer to concentrate on your core business, we are happy to offer a data recording service for your meters. You receive billing data on electricity, gas, water and heat/cooling at cost effective rates, without having to invest in the hardware, software or employee training or incurring follow-on costs for operation, maintenance and repairs.



# Reporting

If you wish, we can create tailored reports to make the information clearer or provide interfaces for further processing of the data in external systems. The reports are produced in close cooperation with our customers and can therefore be tailored to their specific needs.



Änderungen vorbehalten / Sous réserve de modifications / Modification rights reserved  
Copyright © INTEGRA METERING AG, Switzerland

