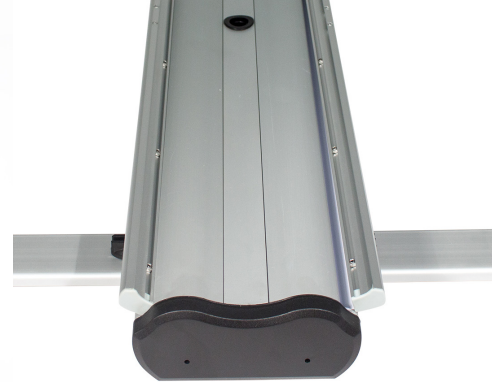


◦ Spec Sheet ◦



The weather-resilient double-sided unit

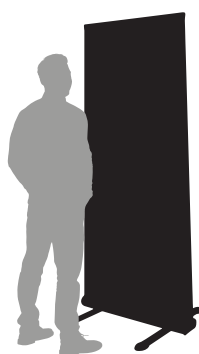
- Bespoke-printed graphics printed on 440gsm PVC
- Multi-screw-secured snap rail
- Large twin feet
- Three-part heavy-duty bungee pole
- Includes ground pegs to secure the unit in wind speeds of up to 24mph/38kph



Specification

Name	Thunder
Overall Width	895mm
Overall Height	2090mm
Overall Depth	810mm
Graphic Width	850mm
Graphic Height	2175mm
Visible Graphic Width	850mm
Visible Graphic Height	2025mm
Warranty	12 months
Weight	11kg

One size



Thunder
850mm-wide

