



COMMUNITY OF AIDAN & HILDA

Houses on Holy Island *Places for Retreat, Prayer and Growth*

Our vision is to provide:

- a welcoming space for people to come on retreat
- a place of prayer and resourcing for the emerging church
- a place of rest and support for those leading in churches, ministries and the marketplace
- hospitality to Community members and interested seekers
- accommodation for individuals and groups to come on retreat and pilgrimage

Our Core Principles and our Way of Life are the values by which we seek to do everything

See our website <https://www.aidanandhilda.org.uk/about-way.php>

What we offer:

Accommodation

We offer simple, welcoming accommodation on a self-catering basis for people coming for retreat and pilgrimage.

We have two 3-bedroom houses, and a 1-bedroom flat will be available in the future.

Spiritual direction and Teaching Inputs

We can provide spiritual direction and teaching inputs remotely or on the island; please book this in advance.

Prayer Room and Celtic Studies Library

One of our goals is to give people access to books with an emphasis on Celtic Christian spirituality. There is a code to get access to our library. The room next door, The Meeting Place, is a great space to meet people, chat, pray or be silent. For more details, please see the welcome pack.

Enquiries and bookings

Please contact the Bookings Manager on 01904 793438 / 07963 617071 or at:

holyislandretreats@gmail.com

Self-Catering Accommodation on Holy Island for Retreatants

HIGH RIGG

3 Bedrooms:

- o 1 double en-suite (with king-size bed)
- o 1 twin en-suite
- o 1 double with shower room & toilet adjacent (ground floor)

Conservatory

Spacious lounge

Fully equipped kitchen/diner (under-counter fridge and freezer; dishwasher; washing machine)

Front & back garden

Located in quiet cul de sac

Bed linen and towels are provided; please bring your own soap and toiletries.



Front view of High Rigg



Spacious lounge



Well-equipped kitchen



Dining area in kitchen

Conservatory



High Rigg continued



Downstairs double bedroom



Downstairs shower room



Upstairs master bedroom with king-sized bed



Master ensuite shower room



Upstairs twin bedroom



Ensuite shower room

SHALOM

- 3 bedrooms:
 - ◇ 1 double
 - ◇ 1 single
 - ◇ 1 smaller single
- Upstairs shared bathroom with shower
- Lounge/diner
- Kitchen
- Small conservatory with seating
- Downstairs toilet
- Front & back garden
- Located in quiet residential terrace

Bed linen and towels are provided; please bring your own soap and toiletries.



Lounge and dining room



Well-equipped kitchen

Shalom continued



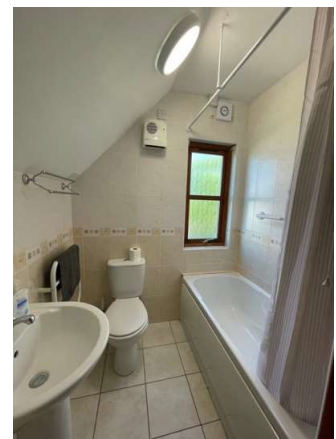
Double bedroom



Single bedroom

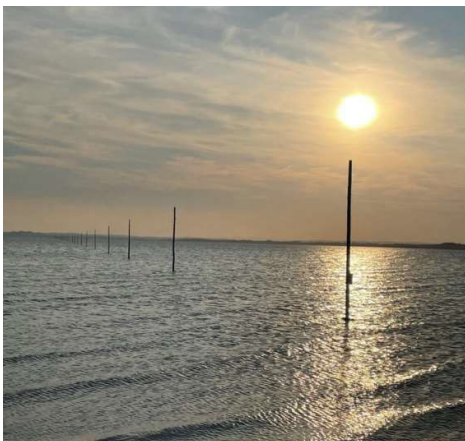


Smaller single bedroom



Shared bathroom

The Holy Island of Lindisfarne



Rates per House

HIGH RIGG

<i>Minimum stay – 2 nights</i>	2 - 3 nights	4 nights +	Nov-Feb** 2-3 nights	Nov-Feb** 4 nights +
Full rate	£240 pn*	£200 pn	£190 pn	£160 pn
Discounted rate	£120 pn	£100 pn	£95 pn	£80 pn

*pn = per night

** excluding Christmas/New Year, when a minimum let of one week applies.

An additional cleaning and laundry charge of £75 is payable per house per stay.

SHALOM

<i>Min. stay 2 nights</i>	2 - 3 nights	4-6 nights	7 nights +	Nov-Feb** 2-3 nights	Nov-Feb** 4-6 nights	Nov-Feb** 7 nights +
Full rate	£150 pn*	£140 pn	£130 pn	£120 pn	£110 pn	£102 pn
Discounted rate	£75 pn	£70 pn	£65 pn	£60 pn	£55 pn	£51 pn

*pn = per night

** excluding Christmas/New Year, when a minimum let of one week applies.

For stays of 3 weeks or longer please contact us for a further discount.

An additional cleaning and laundry charge of £60 is payable per house per stay.

Rates for 2022 are frozen at 2021 prices.

Discounted rates as above are available for:

- Community members (Voyagers and Explorers)
- Full-time Christian workers
- Individuals and groups coming on organised retreat

Terms and Conditions

Payment

The lead retreatant is responsible for the full payment, for providing a bedding list and for liaising with the Bookings Secretary. We would prefer you to pay by bank transfer, but other options are available (please ask). Bank and fee details appear on the invoice.

We require a deposit of 20% of the full fee with the booking. The balance of the fees is required four weeks before arrival. Bookings are not complete until you have received confirmation from the Bookings Secretary.

Cancellation

Sadly, we have to apply charges for all cancellations. We are a charity, and late cancellations compromise our budget as well as depriving others of the opportunity to attend. We obviously don't like asking you for money if you can't come, but we still incur costs. In addition, it is difficult to relet dwellings at short notice, and so we lose further income.

We therefore recommend that you take out travel insurance or be prepared to bear the following charges should you cancel:

More than 8 weeks before arrival - your deposit
Within 8 weeks of arrival - 50% of full fees
Within 4 weeks of arrival - full fees.

Under exceptional circumstances and subject to availability, it may be possible to transfer a deposit to an alternative booking within twelve months.

Check-in and Check-out

Check-in is from 3 pm on the day of arrival and check-out is by 10 am on the last day (2:30 pm on Fri-Sun weekends). This is dependent upon tide times. We will liaise with you if these times need to change for your visit.

IMPORTANT NOTE:

Holy Island is a tidal island, only accessible at certain times of the day. Do make sure to check tide timetables before making arrangements:

<https://holyislandcrossingtimes.northumberland.gov.uk>