

## **Rock Style Building Front – 5 feet tall and 20 feet wide**

Time: Allow a week plus both weekends

### **Materials**

Purchase a bundle of 10 sheets of plain corrugated box board – 5 x 8 feet (from Uline Supply)

¾" foam panels (6 panels of 13" x 48" per pack from Lowes)

Tubes of liquid nail adhesive (use in caulking gun)

Wall paint to suit your color scheme

Rolls of packaging tape

### **Tools**

Hot knife for cutting foam

Utility knife and or large scissors

Paint supplies including foam type brushes and drop clothes

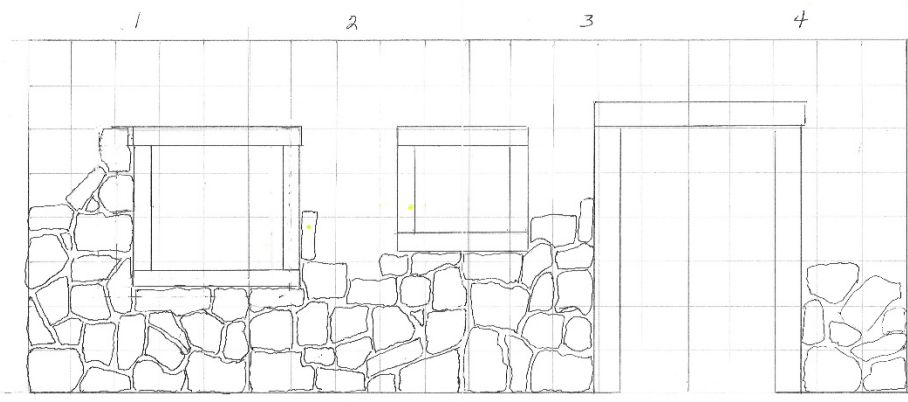
Caulking gun

Measuring tape and yard stick rule

Table saw (ideal for cutting door and window frames)

### **Directions**

- Formulate a layout and design that suits your idea – ours had two windows and one door opening
- Find a large working space such as garage, empty meeting room, or your own living room
- Instead of working on the floor we chose to set up card tables or large furniture boxes to make a table-height makeshift work bench
- For our design we cut out window frames and door frame from the ¾" foam on our table saw
- We worked on one 5 x 8 panel at a time on our makeshift work bench
- Using our hot knife, we cut varied rock shapes from the ¾" foam – enough to cover top to bottom
- We placed the rock shapes on the panel and marked around each rock with a Sharpie so we would know here to glue each rock after painting
- The paint colors we chose were three shades of tan (light tan to medium brown), burnt red and light gray. You may wish to mix colors to match your decor.
- We selected a color for each rock and painted the foam surface and edges, then set aside to dry
- For the panel, we mixed a darker gray and painted in the mortar spaces (we used a wide brush stroke that overlapped the lines)
- We used liquid nail adhesive in a caulking gun to glue each rock in place and weighted them down with jugs of water or other heavy objects to let the glue set
- We followed this same procedure on all four panels
- When completed, we then laid panels 1 and 2 face down and taped together the butted joint using plenty of packaging tape
- Now we carefully lifted the panels up, folding back to back and placing additional panels of box board from the bundle to protect the front surfaces, taping around all edges. We did the same for panels 4 and 5. These are ready to move or ship.
- At the presentation site unfold the panels, set them into place, and zip tie them together and to the canopy legs
- Voila! The stone front looks great – now have fun!



## **Prayer Wall – 7 feet tall and 8 feet wide**

Time: Allow 3 to 4 days

### **Material**

Bundle of 50 flat plain corrugated boxes 12 x 12 x 16 (we had about eight left over)

Rolls of packaging tape

Tubes of liquid nail adhesive or a large bottle of yellow carpenters' glue

Wall paint – your color choice

### **Tools**

Measuring tape rule

Utility knife or large scissors

Painting supplies including brushes and drop cloths

Large hammer

Caulking gun

### **Directions**

- Formulate a plan that fits your space available and ideas
- Assemble and tape boxes (note: some top and end boxes are different sizes – construct these out of the regular boxes)
- You may choose to collect used boxes that fit
- Paint front surfaces to suit your color scheme. After the front surfaces were painted to our liking, we then dabbed black paint along the bottom edged of each box to accentuate the stone look.
- We now used the large hammer to smash in most front corners and along edges to resemble rugged rock
- Glue boxes end to end to form the bottom row (note: only put a bead of glue along the middle and back edge of boxes, leaving the front edge unglued to allow for the paper prayer notes to be inserted)
- Use gallon jugs of water for weight and allow glue to dry 30 minutes to an hour before handling (note: we found it best to slip strips of cardboard along the front edge to ensure that there would be space for prayer notes)
- Work row by row up to the top
- **IMPORTANT:** As you work bottom to top, pick a middle joint to NOT glue – this will allow you to pull the finished wall apart into two halves for ease of moving and storage
- Lay these halves flat face down and apply five long stripes of packaging tape top to bottom on the back side to add rigidity to the wall
- Handle with care and protect the front wall surface at all times

